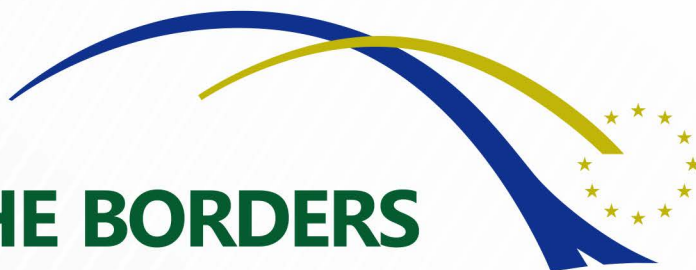


Central European Service for Cross-Border Initiatives  
European Institute of Cross-Border Studies



# CROSSING THE BORDERS

## Studies on cross-border cooperation within the Danube Region

### Case Study

The Euroregion Šumava – Bayerischer  
Wald/Unterer Inn – Mühlviertel



Written by

**Institut EuroSchola (Czech Republic)**

Jaroslav Dokoupil

Milan Jeřábek





## Contents

|  |           |
|--|-----------|
| <b>1. Introduction</b> .....   | <b>2</b>  |
| <b>2. Development of cross-border cooperation</b> .....  | <b>5</b>  |
| 2.1 The development of the Euroregion Šumava-Bayerischer Wald/Unterer Inn-<br>Mühlviertel .....  | 6         |
| <b>3. Geographical characteristics of the area</b> .....   | <b>8</b>  |
| <b>4. Organisational and institutional structures, activities</b> .....  | <b>16</b> |
| 4.1 The emergence of the institution as a single cross-border unit .....   | 16        |
| 4.2 Spatial definition and membership in the Euroregion .....  | 17        |
| 4.3 Organisational structure .....   | 19        |
| 4.4 Main activities .....  | 21        |
| <b>5. Composition of the working group</b> .....   | <b>23</b> |
| <b>6. Main activity fields</b> .....   | <b>24</b> |
| 6.1 Topical orientation .....  | 24        |
| 6.2 EU funded initiatives .....  | 26        |
| 6.3 Disposition fund and Small projects fund .....   | 42        |
| 6.4 Analysis of the cross-border cooperation programmes' contribution .....  | 45        |
| <b>7. Management (revenues/expenses)</b> .....   | <b>48</b> |
| <b>8. SWOT analysis</b> .....  | <b>50</b> |
| <b>9. Future plans and cooperation aims</b> .....  | <b>53</b> |
| 9.1 The European Region Danube/Donau-Vltava/Moldau .....   | 54        |
| 9.2 Goals .....  | 55        |
| 9.3 Relations between the Euroregion Šumava - Bayerischer Wald/Unterer Inn-<br>Mühlviertel and the European Region Danube - Vltava ..... | 56        |
| <b>10. The position of the Euroregion Šumava-Bayerischer Wald/Unterer Inn-Mühlviertel<br/>    among other Czech euroregions</b> .....    | <b>58</b> |
| <b>11. Summary</b> .....   | <b>61</b> |
| <b>12. Bibliography</b> .....  | <b>63</b> |
| <b>13. Annexes</b> .....   | <b>65</b> |



## 1. Introduction

This case study was elaborated in the framework of the project „Crossing the Borders: Geographic and Structural Characteristics of Cross-Border Cooperation in the Danube Region”, a project led by CESCO (Central European Service for Cross-border Initiatives). The case study was elaborated between July and November 2014 by a team of three authors: Milan Jeřábek, Jaroslav Dokoupil and Hynek Böhm. We chose to analyze the state of affairs of cross-border cooperation within the Danube Region through the case of the Euroregion Šumava – Bayerischer Wald/Unterer Inn – Mühlviertel.

The reason for selecting this Euroregion was its geographical location at the Czech-Austrian-Bavarian borders – countries/lands belonging to the Danube Region Strategy. Moreover, the cooperation has been institutionalised under a euroregional heading. Further, the attractiveness of this Euroregion was also underlined by the fact that a sort of competitor operating at regional level, European Region Danube–Vltava, was established recently.

The Euroregion called Šumava-Bayerischer Wald/Unterer Inn-Mühlviertel lies on a linguistic border between the Czech- and German-speaking populations; on a limit between the Slavic and Germanic language groups. It lies on the border of countries that were ideologically and politically on opposite sides during the Second World War and also in the post-war period of the late 20<sup>th</sup> century, especially during the Cold War period. The Euroregion is located on the border between the former socialist countries of Europe on one side, and Western European democracies on the other side. Before opening the borders, there were practically no social, economic, or even simply human contacts here. Therefore, the 1990s were filled with huge expectations. The "hunger" for cross-border cooperation was reflected in a number of diverse contacts and projects that were trying to establish standard neighbourly relations not affected by the past.

With the establishment of the Euroregion Šumava-Bayerischer Wald/Unterer Inn-Mühlviertel, there was a renewal of traditional cultural and economic cohesion carried out by establishing new contacts, mutual meetings and friendship with foreign neighbours, while considering the purpose of the gradual elimination of negative stereotypes of the recent past. As the Czech Republic entered the European Union, this effort naturally expanded and deepened. A further impulse then came later with the inclusion of the Czech Republic in the Schengen area.

The role of the Euroregion consists of coordinating cross-border and regional cooperation, and defending the views and interests of the member municipalities and cities as representatives of public administration, respectively territorial governments. The organisation also tries to keep close cooperation among all three parts (Czech, Bavarian, Austrian) in the sense of a single cross-border unit conditioned by common regional features, including an appropriate territorial identity. This is undoubtedly a significant contribution to alleviate various disparities (those conditioned in both endogenous and exogenous ways) as well as to promote Šumava



(Bohemian Forest) in the regional competition. Last but not least, the Euroregion in general (and here in particular) represents an instrument for European integration at the regional level. However, we considered this level as more important than national or transnational ones, since this is the level where seams of history are removed and mutual coalescence is established - in accordance with the Charter of European Border Regions.

The relatively recent 20-year anniversary of the Euroregion may be considered as a good opportunity to review how leaders on the political scene of the participating states expressed their opinions, among other things. The provincial governor of Upper Austria, Mr. Josef Pühringer, highlighted three goals for a common Europe: breaking boundaries, bringing people together, and becoming stronger with united powers. He also reminded us to one of the EU's principles, namely subsidiarity, where initiatives in the form of projects do not come from higher positions but are instead created by the citizens of a region. The former Czech Minister of Foreign Affairs, Mr. Karel Schwarzenberg (possessing Austrian citizenship, too) understood that no more dividing lines exist, where presence and especially future of this "treasure" lies in common hands. Mrs. Beate Merk, Bavarian State Minister for European Affairs, accented the civil and communal dimensions of Europe, based on personal contacts, friendship and joint projects. Mr. Walter Deffaa, head of the General Directorate of European Commission for Regional Policy, also expressed his opinion by focusing on regional and local initiatives and experiences that can become inspirational for application in other European (cross-border) regions, despite the considerable diversity of the area. Mr. Karl-Heinz Lambertz, chairman of the Association of European Border Regions, AEBR, brought his opinion on behalf of this association: *"Every further overcoming of boundaries is constantly bringing challenges which can only be solved in a joint basis. Border regions - such as the Trilateral Euregio - represent the borderland of Europe. And everyone knows that the whole work is only as strong as the borderlines are."*

Activities in the Euroregion are undoubtedly rather influenced by higher levels of politics than by local (administrative) ones. There is a Bavarian-Czech working group in place that meets every 12-18 months since 1990. In 2012 there was the 20<sup>th</sup> meeting in Furth im Wald, where the members noted that the contacts and cooperation are working in many areas of economy, politics, society, and church, which was considered as impossible around 20 years ago. There is only a language barrier between the Czechs and Germans (and Austrians), which is considered as a new obstacle. *"However, language is a key factor for everything,"* says Mrs. Brigitta Brunner, Government President of Upper Palatinate region.

If we monitor the model area in a broader context, we can see it as part of the transformation from the Iron Curtain to the Green Belt. The Iron Curtain represented both a political as well as a physical barrier; it was an inaccessible territory for people. However, the Iron Curtain was favourable for nature (so-called Secondary Succession). It has first been considered as the belt of life in Germany and later elsewhere, becoming the subject of institutional protection. It includes 22 European countries, having the total length of 8 500 km. The Czech border (with



Germany/Bavaria and Austria) covers about 800 km, while the substantial part lies in Šumava (Bohemian Forest, Böhmerwald or Bayerischer Wald in German).

The main goal of this paper is to analyse the current cross-border cooperation in the Euroregion. This analysis will be introduced through a historical exposé, before making the readers familiar with the governance structures of this cooperation entity. Afterwards the role of European funds in this Czech-Austrian-Bavarian cross-border cooperation will be examined. The relations between Euroregion Šumava-Bayerischer Wald/Unterer Inn-Mühlviertel and the newly created European Region Danube–Vltava/Moldau will also be analysed.

The predominant working method of the study is desk-research, which mainly includes work with internet sources on the Euroregion and on European grant programmes (mainly INTERREG programmes). We will also work with the results of previous recent research projects on the territory in question. This will be complemented by more qualitative research methods – mostly interviews with stakeholders responsible for the CBC in the concerned territory.



## 2. Development of cross-border cooperation

The Czech-Bavarian-Austrian border went through three different regimes and functions of the border during the last 25 years. To be specific, it moved from the function of a barrier (before 1990), through the function of contact (1990-2004) and it gradually reached a practical liquidation of the border, namely the introduction of the “Schengen regime” in the Czech Republic (and other nine “new” EU Member States), which happened in December 2007. This is the main aspect for the functioning of possible cross-border cooperation initiatives. It was not possible to see any formal cross-border cooperation before 1990; the border was closed hermetically (so-called "Iron Curtain"); any activities could only be carried out under a strict control in order to protect the territory against the neighbouring enemies. After 1990 (fall of the "Iron Curtain"), there was a rapid development in cross-border activities with a view to understand the neighbours, their life and culture, but also seeking for profits of different economic backgrounds. Hence, cross-border relations were facing a different character in the early nineties. It is also the time when the first cross-border joint activities were formed, including special-purpose associations and institutions of municipalities, that were the basis for future Euroregions. It is a time when we can talk about the emergence cross-border cooperation and the joint cross-border planning of activities, often based on civil, private or public relations.

One indicator of openness for the Czech borderland is the nature and intensity of cross-border relations. The Czech-Bavarian-Austrian border region was part of the territory at the external borderline of the European Union toward the countries of Central and Eastern Europe. Political changes in this part of Europe enabled the creation of a new environment for cross-border relations in its border regions with EU countries. Although cross-border relations showed a number of differences in individual regions bordering EU countries, it is still possible to characterize them with some common default characteristics, defined by their previous development: absence of political reasons for cross-border cooperation before 1990, sensitivity for the issues of cooperation in the context of historical experiences; significant economic imbalance; considerable diversity of legal and administrative structures; migration flows through borderland regions; cultural and linguistic diversity.

An important impulse for developing cross-border cooperation was provided when the initiative of PHARE CBC/CREDO at the institutional level was launched. Since 1994, this program has been contributing mainly to the construction or reconstruction of infrastructure networks; it introduced the Fund of Small Projects as an instrument assisting in the process of creating cooperation networks between local and regional authorities and organizations, including contacts between individuals. In a short time the process of the renewal of transportation infrastructure in the Czech border area was launched, which was caused by an increase in the importance of the Czech-Bavarian-Austrian border region as a transit area as well as an enormous growth of road traffic density. CBC/CREDO PHARE programme also prepared potential applicants for projects from EU Structural funds in the pre-accession period.



## 2.1 The development of the Euroregion Šumava-Bayerischer Wald/Unterer Inn-Mühlviertel

The relevant events in brief were:

- 1989 – fall of the Iron Curtain, end of the barrier function of the borders between Czechoslovakia and Austria as well as Bavaria,
- 1993 – establishment of Euroregion Šumava-Bayerischer Wald/Unterer Inn,
- 1994 – Accession of the Austrian part (Mühlviertel), launch of the European programme INTERREG II (1994-1999), PHARE programme launched (1994-2004),
- 1995 – the EU enlargement – accession of Austria (together with Finland and Sweden),
- 1997 – abolition of border control between Austria and Germany (Schengen Agreement)
- 2000 – start of the INTERREG III A (2000-2006) programme,
- 2002 – introduction of the EURO in Austria and Germany,
- 2004 – EU enlargement, accession of the Czech Republic,
- 2007-2013 – new generation of Objective 3 programmes,
- 2007 – abolition of border control between Austria, Germany, and the Czech Republic; extension of the Schengen Area; the restrictions on the free movement of workforce towards the new countries remained nevertheless in force until 2011; launching Objective 3 programmes – European Territorial Cooperation,
- 2012 – founding European Region Danube–Vltava/Moldau,
- 2013 – 20<sup>th</sup> anniversary of the Euroregion.

The Czech accession to the European Union (2004) and subsequently to the Schengen area (2007) brought essential changes for the development of cross-border cooperation. After joining the European Union, the Czech-Bavarian border region comes to the position of a central region between Prague agglomeration (respectively those of Pilsen) and Munich (respectively those of Nuremberg and Regensburg). Even though it is a rural area, its possible regional development can be derived from the transition nature of the area. This is the case of building objects of the tertiary sector, focusing on transport, trade and other services, while in relation to the preservation of the unique character of natural and cultural heritage for development of different forms of tourism. Its location along one of the main Central European roads in connection with the above-mentioned economic development should also help to improve the socio-economic factors and the use of natural factors. Resulting from the removal of borders and the essential changes in the significance of positional relationships, a new hierarchy of relations is under creation in the region; there is a development in the strengthening of functional regions as well as in the efficient use of local potential. We can talk about an integrative function of borders after the adoption of the Schengen Agreement in the Czech Republic. The transiting feature of the region in contrast with the above-mentioned



positive development can however give rise to a new type of periphery - e.g. inner periphery in relation to the possible strengthening of a bridge effect between the central regions.

Other aspects depend on the nature of the area in question. The peripheral position of the Czech part of the Czech-Bavarian-Austrian border region is caused, among others, by its remoteness from major population centres. As reported by Hampl (2000), the differentiation of the Czech borderland is characterized by a relatively high congruence of aspects related to its typological evaluation. Individual aspects may include the existence of strong regional centres, including higher intensity of population, industrialization and urbanization. Hampl defines five regions of the functional type; those corresponding with departmental competence of the centres of inter-regional rank as well as the centres of new regions: the regions of Karlovy Vary and Liberec as complex and closed units in relational and relative ways, identical to new regions. In three cases - the regions of Ústí, Ostrava, and Zlín - the variations have only little significance compared to new regions, respectively "natural" inter-regions.

The remaining parts of the borderlands (including the Czech-Bavarian-Austrian borderland) resemble to peripheral zones with inclination to inland centres. Most districts of the borderland areas have a significantly low level of population density; therefore some elements of homogeneity can easily be found there.

This characteristic feature of the territory implies that stakeholders involved in cross-border cooperation have been facing a rather difficult starting position. We can say that the main instrument in their hands is the INTERREG programme. The work with that programme is in more details described in Chapter 6.





### 3. Geographical characteristics of the area

The Šumava-Bayerischer Wald/Unterer Inn-Mühlviertel is located in Central Europe, on the border between the Czech Republic, the Federal Republic of Germany (Bavaria) and Austria (Upper Austria). On the Czech side, the Euroregion is part of the Southwest Cohesion Region (districts Domažlice, Klatovy, Prachatice, Český Krumlov, Strakonice). In Bavaria, it contains the German administrative regions Oberpfalz and Niederbayern (districts Cham, Deggendorf, Freyung-Grafenau, Passau, Regen and Rottal-Inn). In Austria, the territory of this Euroregion is part of the state of Upper Austria, more specifically that of the Mühlviertel (political districts Perg, Freistadt, Rohrbach and Urfahr-Umgebung). In the northwest the Šumava-Bayerischer Wald/Unterer Inn-Mühlviertel Euroregion borders the Egrensis Euroregion, and in the southeast the Silva Nortica Euroregion. The Šumava-Bayerischer Wald/Unterer Inn-Mühlviertel Euroregion lies on the linguistic border between the Czech and German-speaking population.

The main physical-geographical element of the entire Šumava-Bayerischer Wald/Unterer Inn-Mühlviertel Euroregion is a mountain range called Šumava in the Czech part, Bayerischer Wald in the German part, and Böhmerwald in the Austrian part. The highest parts of the mountains reach over 1 400 m (Großer Arber/Velký Javor – 1 456 m), the elevations around 1 000 m above sea level typically display flat surfaces, called Šumava plains, and the higher elevations of the Šumava show the outcome of the effects of glacial activity (cirques, moraines). Towards the northwest, the Šumava and Bayerischer Wald border the lower Všeruby Highlands/Cham-Further Senke and a part of the Český les/Oberpfläzner Wald mountains with their foothills. There are hills and uplands on both sides of the Šumava foothills. In the German and Austrian parts, the terrain slopes down to the Danube valley. The beginning of the very extensive Alpine foothills can be found to the south of the Danube.

The territory of the Euroregion is located in the temperate climatic area with significant climatic differences. The cold and harsh climate of the Šumava has the average annual temperature in the upper parts around zero and in the foothills around 5-6°C, with increasing temperatures towards the interior. The upper parts also display a very high level of average annual precipitation, reaching values up to 1 400 mm per year. The precipitation amount is significantly fewer at the lower areas of the Euroregion.

A number of major rivers rise in the mountain ranges of the Euroregion. The main European watershed between the North Sea and the Black Sea drainage areas runs through this area. The Vltava River, rising as Teplá Vltava and Studená Vltava, and the Otava River, emerging at the confluence of the Šumava rivers Vydra and Křemelná, flow towards Bohemia. Major watercourses also include Radbuza and Úhlava. In the German part, there are a number of watercourses belonging to the Black Sea drainage area. Some of them rise in the Czech part of the Šumava, e.g. Regen, Flanitz, Riedlsbach, Sägwasser, Grenzbach on the border, as well as



Michelbach, continuing as Grosse Mühl in Austria. The most important water artery of the Šumava Euroregion is the Danube River.

Natural water surfaces include glacial lakes – Černé jezero (Schwarzer See), Čertovo jezero (Teufels-See), Laka (Lakkasee), Prášilské jezero (Stubenbacher See), and Plešné jezero (Plöckensteinsee); the Bayerischer Wald part contains glacial lakes Großer Arbersee (Velké Javorské jezero), Kleiner Arbersee (Malé Javorské jezero) and Rachelsee (Roklanské jezero). The most significant artificial body of water is the Lipno water reservoir, which serves many purposes (in particular water management, energy and recreation) and is the largest lake in the Czech Republic (4 870 ha). The water reservoirs Nýrsko on the Úhlava, in the Klatovy region, and Římov on the Malše, on the border of Český Krumlov and České Budějovice, serve as sources of drinking water. In the southern part of the Šumava, in the Boletice military district, we can find a major body of water called Olšina. The well-known dams in the Bavarian border region include Frauenau and Stausee (water sports).

Apart from the rare inanimate nature, rare wildlife can also be found in the mountain ranges of the Šumava/Bayerischer Wald/Böhmerwald and Český les/Oberpflänzer Wald, paradoxically also thanks to the former “Iron Curtain”, which restricted human activities in the border region. This helped to preserve the original local natural communities. Pine forests at higher elevations and spruce-beech-fir forests and fir-beech forests at lower elevations represented the original vegetation. Due to human activities, the original mixed forests were significantly transformed into spruce monocultures, which have caused the current problems, such as the bark beetle outbreak in the Šumava or substantial windbreaks and windfalls in stormy weather. On the plateaus, a number of peat bogs with typical peat-bog plants can be found, e.g. Modravské slatě (Weitfällfilze) at Modrava or Chalupská slať (Großer Königfilz) at Borová Lada. There are many rare and protected species of birds, mammals and other animals in the forested areas of the mountain range.

Mineral resources, previously mined in the area, include glass sands, gold, peat, iron ore, graphite in the Český Krumlov and feldspar, currently mined in the Domažlice region, and deposits of limestone, quarried in the Sušice region. Gold was panned on the Otava River and on some other streams, and its deposits can also be found near the Kašperské Mountains (Bergreichenstein). Another important natural resource is the significant amount of wood.

Due to the great natural wealth, conservation plays an important role in the Euroregion. It is organized both on the international and national levels (Šumava – UNESCO Biosphere Reserve, Šumava National Park and Šumava Protected Landscape Area, Český les Protected Landscape Area, a number of nature reserves, Kochánov Natural Park). In Bavaria, the Šumava National Park is connected to the Bayerischer Wald National Park and, in the northern part, to the Oberer Bayerischer Wald Natural Park.

The Šumava-Bayerischer Wald/Unterer Inn-Mühlviertel Euroregion comprises an extensive territory. More than 1,3 million people inhabit its districts, with the German part being the most



populated, and the Austrian part the least populated areas. Foreigners living in the districts of the Euroregion are represented to varying degrees. The highest proportions (over 10%) can be found in the Bavarian city districts of Stadt Passau and Stadt Straubing. In other districts, the proportion of foreigners is considerably lower, ranging from 2% to 5%. They are citizens of the neighbouring countries, as well as Slovaks, Ukrainians, Russians, and Vietnamese.

The population density in these districts varies. The lowest values are shown by the Czech districts of Prachatice and Český Krumlov (fewer than 40 inhabitants per km<sup>2</sup>), the highest ones are in contrast in the Bavarian city districts of Passau and Straubing. According to the data for districts, population distribution is rather uneven. Population density increases in all three parts of the Euroregion towards the interior, which is more significant in the Czech part. Density is higher especially in cities that are natural centres of economic and social life and of services in their vicinity. This phenomenon is especially evident in the Bavarian and Austrian parts of the Euroregion. The population is also concentrated along the main arteries. Population density is generally higher in the German and Austrian parts of the Euroregion than in the Czech part. This is especially due to the post-war events of the last century. The Czech border region lost a substantial part of the population after the displacement of ethnic Germans, and this German population ultimately settled on the other side of the border. In the Czech border areas, the pre-war numbers of the population and thus the corresponding density have not been reached yet.

The demographic situation in the Šumava Euroregion is also different in various parts from the perspective of population dynamics. This can be seen if we focus on the natural change, mechanical change or total change. The worst situation in the natural population change has long been observed in the German part of the Euroregion, with Bavarian districts showing a natural population decline. In the Austrian and Czech parts of the Euroregion, the situation has somewhat improved, and there have been both natural increases and natural decreases in recent years.

The migration increase/decrease (net migration) is a demographic indicator of the mechanical movement of the population. In the Czech part of the Euroregion, the districts of Český Krumlov, Prachatice and Klatovy have displayed negative net migration in recent years, with only Domažlice as a whole exhibiting a slight increase in migration. The German part of the Euroregion typically displays municipalities with positive and negative net migration, and its differences between municipalities were sometimes very significant, but usually lower than in the Czech and Austrian parts of the Euroregion. The data for the Austrian part of the Euroregion indicates high negative net migration in the municipalities located not only in the immediate vicinity of the border, but generally throughout the Austrian part of the Euroregion. An exception is the Linz region with positive net migration in many municipalities.

The total increase shows changes in the population in a certain area for a certain period of time. Recently, in comparison with the Bavarian and Austrian parts, the situation has been



significantly more positive in terms of total population increase in the Czech part of the Euroregion. This situation depends on many factors, the most important being economy, transport and population structure. Comparing the situation in all three parts of the Euroregion, it can be clearly said that the greatest problems concerning the overall population change are on the German side of the border.

Important characteristics of the population potential also include information about its age structure (age index as a basic indicator of the population aging process). The highest values of ageing index are reached in the Bavarian part of the Euroregion. This means that, in terms of the age structure, inhabitants aged 65 years or older are significantly more numerous than inhabitants up to 14 years of age. This fact is a consequence of multiple contributing factors. Especially for the younger generation, the Bavarian-Czech border region is not attractive. The Austrian part of the Euroregion has in contrast a rather balanced age structure without extreme values. There are significant differences in the Czech part, with the highest proportion of children displayed by some developing municipalities in attractive locations in the South Bohemian Šumava (the area around Lipno) and some municipalities located directly on the border in the Šumava National Park. Conversely, high age index values, i.e. aging population, is displayed by municipalities in the parts belonging to the Pilsen region, with an increasing trend from the state border towards the interior, e.g. the Sušice region.

In relation to the historical development of the Euroregional territory, the economic basis of the Euroregion has had a complex development. After the fall of the “Iron Curtain” a dynamic process of structural changes began, in particular in the Czech part of the Euroregion, in an effort to build on the economic and social potential from the period before the Second World War. In general, it can be said that the economic base of the area in question is highly heterogeneous. While there are economically strong city regions located mainly along the axis of the Danube (e.g. Regensburg, Straubing, Passau), the northern and eastern parts of the Euroregion are below the average values of the EU based on its economic performance. This inequality has been caused, of course, by the different historical development of the distinct state territories, as well as by the location and physical geographical endowments. Despite the aforementioned differences in economic performance, remarkable economic growth has been observed throughout the Euroregion, especially in the Czech part.

The economic situation of the Euroregion is obviously closely connected with the local demographic situation. Particularly the German and Austrian parts display both natural population decline and negative migration rate, as the young generation have left for more densely populated areas of Germany offering more job opportunities. The aging population generation, as well as the industry shaped by structural changes, are a reflection of the historical development of the area.

The economic structure of the Euroregion is primarily determined by small and medium-sized enterprises. They are, particularly in the Austrian and German parts of the Euroregion,



accompanied by a dense network of support structures such as technology and innovation centres that facilitate the development of innovative businesses. Based on the specificity of their focus, some of these small and medium-sized enterprises have penetrated global markets with high export rates of their products. There are relatively few multinational firms based in the Euroregion.

The traditional economic sectors of the Euroregion are agriculture and forestry, both naturally resulting from the character of the local landscape (organic farming). While the German part of the territory reduced the share of the primary sector in GDP, it has increased in the Czech part. A higher proportion of people employed in agriculture and forestry is also displayed by the Mühlviertel region in Austria.

Industry in the Euroregion has a relatively lower concentration. However, it is also possible to find districts with a significant share of industry (e.g. in the Straubing-Bogen district). Traditional industries throughout the Euroregion include glass production and the aforementioned woodworking industry. At present, the Czech-Bavarian border region displays a revival of industrial production, for example, plastics industry. Other promising sectors include engineering (automotive industry). The biggest structural change in the industry occurred in the Czech part of the territory: thanks to foreign investors, the production of components for the automotive industry began to develop, especially the manufacturing of plastics as well as metal processing.

The tertiary sector is also unevenly distributed and it has different meanings in different parts of the area in question. While in the Czech part of the Euroregion the tertiary sector is mainly represented in the form of trade, transport, catering and tourism, in the Bavarian districts and in the area around Linz financial, rental, and business services are more significant. One of the strengths of the Euroregion is the existence of economic networks and clusters that are active across borders and that provide opportunities for future development. They emerge mostly in relation to universities and research centres (e.g. the German part has universities in Passau and Deggendorf and a scientific centre in Straubing). The Bavarian Rottal valley and Bad Füssing also offer medical tourism with treatment options, as well as wellness (Bad Brinbach). Recently, as an attraction, there have been excursions to large industrial enterprises in the region (breweries, industrial plants).

With respect to the unemployment rate, higher values are especially displayed by the Czech part of the Euroregion. In some cases, it has had even twice as high unemployment rates compared to German or Austrian districts. Higher unemployment affects mainly peripheral, agriculturally oriented districts in the border area. These districts also face the outflow of mainly young qualified people leaving for major population centres.

In their daily lives, inhabitants and visitors of the Euroregion need different networks. The technical infrastructure includes transport networks and equipment used for the distribution of electricity, gas, water, the collection and treatment of wastewater, and the like. Basic



services exist in all municipalities of the Euroregion, although at different levels. The quality of services largely depends on the belonging to a particular state. Furthermore, the provision of networks and the operation of the necessary facilities (sewage treatment plants, substations, gas pressure stations, etc.) depend on the size of the municipalities and their position within the mountain range.

With respect to transport, a major road of the Šumava Euroregion is the German motorway A3 (E54), running from Bavaria to Austria (in the Euroregion between Regensburg and Passau). Major road routes of the Euroregion are connected not only to A3, but also to three other motorways that run relatively close to the Euroregion. These are the north-south German motorway A93, the east-west Czech motorway D5 (A6, E50), and the Austrian motorway E60 from Linz to St. Pölten.

There are no motorways in the Czech part of the Euroregion. Major access roads include class 1 roads leading from Pilsen to the Bavarian town Furt im Wald (26), Zwiesel (E52, 27), class 1 roads connecting Strakonice, Vimperk, and Freyung (4), and the road connecting České Budějovice, Kaplice and Freistadt (E55). These are connected to the German and Austrian principal road network.

Within the Euroregion, the Czech railway network is connected to the Bavarian lines in Česká Kubice and Železná Ruda, and to the Austrian network in Horní Dvořiště. In addition, there are several regional routes in the Czech part of the Euroregion that are of great importance for the local population.

The quality of road and railway transport and accessibility are dependent on the position of a specific area/municipality within the Euroregion. Main road and railway lines are fairly accessible in general. Conversely, the quality of road and railway networks, as well as travel opportunities, especially on the Czech side of the border, decreases with higher elevations. In some places, there is a very poor network of local roads (class 2 and 3), whilst accessibility by public transport has been reduced due to financial reasons, and regional railway lines might also be affected.

In general, particularly the area of the Šumava/Bayerischer Wald/Böhmerwald mountain range in the north-south direction, i.e. from the Czech Republic to Bavaria and Austria, is less permeable for road and railway transport, the reason being a mountain barrier. Furthermore, very valuable landscape features and ecosystems that are currently among the most strictly protected areas (e.g. included in the first zone of national parks) have survived along the state border. The factors mentioned above even prevent the simple crossing of the border on foot, although there are no formal barriers to cross at any place after the Schengen Agreement is in effect.

An important waterway in the Bavarian and Austrian parts of the Šumava Euroregion is the Danube River, used for the river transport of passengers (including cruises) and goods. Other



rivers are only used for recreational tourism in some places. In 2012, regular steamboat transport within the Lipno dam was resumed.

Public facilities are used by the local population and also for the needs of tourism, which is very significant for the Euroregion, because it combines both natural and cultural-historical endowments with numerous necessary facilities. There are no spa locations in the territory of the Czech part of the Euroregion, although there are a number of sites with wellness services. The Bavarian part of the Euroregion offers popular spas in Bad Kötzing and Bad Füssing and the climatic spa Bodenmais; in the Austrian part, the spa town of Bad Leonfelden is the most significant one. There are however problems with the infrastructure, whilst the popularity of the region coupled with the significant concentration of visitors in the most attractive centres are contrary to the rules of nature conservation.

In addition to the natural attractions described above, the area in question has also got many cultural-historical sights. Their popularity helps many of these places to develop tourism facilities (primarily for catering and accommodation). Apart from Český Krumlov, a UNESCO World Heritage Site, the Czech part offers national cultural monuments, e.g. the Horšovský Týn castle complex, Vimperk, the ruins of the Rabí castle, the Švihov castle and the Rožmberk castle, the ruins of the Velhartice castle, the Český Krumlov castle, Zlatá koruna and Vyšší Brod monasteries, the birthplace of Jan Hus in Husinec, St. Nicholas Church in Čečovice in the Domažlice region, and the Church of the Assumption of the Virgin Mary in Kájov in the Český Krumlov region. Urban conservation sites include Domažlice, Horšovský Týn and Prachatice. Folk architecture can be found for example in the municipalities of Stachy, Dobré at Stožec and in other Šumava villages. Unique technical monuments include the remains of a horse-drawn railway that connected different parts of the territory of the Euroregion in the last century (completed in 1832). It was mainly used to transport salt from the Austrian Salzkammergut and other raw materials from Linz to the Czech lands. At one point it also transported passengers. In the past, it was Europe's longest railway line. Other significant technical monuments include navigation canals (e.g. the Schwarzenberg canal and the Vchynice-Tetov canal), remains of mining tunnels, old bridges and lookout towers.

The Austrian part of the Euroregion contains numerous castles (Wienberg, Dornach, Eschelberg, Marschbach, Pibersteinm, Rannriedl, Wildberg) and chateaux (Brunnwald, Neuhaus an der Donau, Sprinzenstein), and historic towns such as Freistadt.

The Bavarian part of the Euroregion attracts visitors with ancient historical towns and their sights. We can mention, for example, Regensburg, one of the residence towns of the Frankish kings with the remains of Roman buildings, Passau and Cham, one of the oldest towns in the border region. In its vicinity we can find Chammunster, a monastery from the ninth century. Displays of folk architecture are protected in open-air museums, for example in Bärnau or in Thurmansbang-Tittling. Popular places include the climatic spa Zwiessel, and castles and



chateaux such as Buchnau, Egg, Englurg, Neuenbuchberg, Friedrichsburg, Falkenberg, Falkenstein, Parsberg, Thierlstein, Waldau, and Wildenau.

The Euroregion also offers more special infrastructure facilities of museum type (e.g. Passau, Furth i. W., Sušice, Kašperské Hory, as well as glassworks and glass museums, e.g. in Bodenmais and Frauenau), zoological and botanical gardens, game parks and places of similar type (Furth i. W., Straubing), leisure parks (e.g. Neukirchen b. H.), and the oldest German folk performances “Slaying the Dragon” (“Der Drachenstich”) in Furth i. W.





## 4. Organisational and institutional structures, activities

### 4.1 The emergence of the institution as a single cross-border unit

The Euroregion Šumava-Bayerischer Wald/Unterer Inn-Mühlviertel is a trilateral platform that was – after several subsequent initiation meetings in 1991-1992 – constituted in 1993, respectively 1994. It was established as a cooperation of three independent legal entities in the Czech, Bavarian, and Austrian parts, each having its own legal status. This initial constellation has remained unchanged until present. The Czech subject called Euroregion Šumava, South-western Bohemia has an office in Běšiny (district Klatovy); the Bavarian part of the Euroregion – Bayerischer Wald-Unterer Inn – is seated in the municipality of Freyung (district Freyung-Grafenau); and the Upper-Austrian part – Mühlviertel – is managed by the Regional Management Mühlviertel that resides in Freistadt municipality in the eponymous district.

The Euroregion was established in 1994 as a third euroregion with the participation of Czech subjects. Currently it covers, jointly with another twelve euroregions (see Picture 1), the entire length of the state border. It was able to strengthen – together with similar groupings from other border areas – its position through already established or newly constituting institutional structures and governance networks (regions, districts, areas with municipalities with extended authority etc.). This situation is rather complicated as the cooperation is trilateral.

The Euroregion Šumava-Bayerischer Wald/Unterer Inn-Mühlviertel is one of the four examples of trilateral Euroregions with Czech participation, which obviously makes communication, coordination, and realization difficult. The Euroregion Šumava-Bayerischer Wald/Unterer Inn-Mühlviertel does not even comply with any formalised administrative division used in the participating states. For example on the Bavarian side it is not corresponding with the natural entity of Šumava/Bayerischer Wald. The Czech part of this Euroregion belongs to the territory of Pilsen region and South-Bohemia region, both having their own structures at the NUTS3 level while also jointly constituting NUTS2 Region Southwest.

It is necessary to point out that euroregions in general and their acceptance by public administration (state, self-government) has been evolving gradually. At least in the Czech Republic we must underline that euroregions were established before the current public administration structure based on 14 self-administrative regions was established in 2000. These newly established regions sometimes considered euroregions as competitors. It took a while to achieve at least partial mutual understanding, to draw the demarcating lines, and to set joint cooperation agendas between both types of institutions or structures. This division line respects the basic mission of both types of bodies: while the euroregions' main task is the promotion of cross-border cooperation, regions as higher territorial administrative units account for the comprehensive development of the particular territory.



Germany and Austria are federal states and there is a higher need for cooperation at the national level. The Free State of Bavaria represents a NUTS1 unit while Upper-Austria as a NUTS2 region is at a lower level of the statistical administrative-territorial hierarchy. There are also rather minor and more or less terminological differences in organising lower administrative units in Germany and Austria: in case of Bavaria there are government regions (Regierungsbezirke), including Oberpfalz (Upper Palatinate) and Niederbayern (Lower Bavaria); these are further divided into districts (Landkreise). In Austria we can find regions (areas) such as Mühlviertel, which are co-constituted by several political districts (politische Kreise).

## 4.2 Spatial definition and membership in the Euroregion

The Euroregion Šumava-Bayerischer Wald/Unterer Inn-Mühlviertel neighbours to the Euroregion Egrensis in the northwest and to the Euroregion Silva Nortica in the southeast (see Figure 1).



Figure 1: Euroregions in the Czech Republic

Source: CZSO, Euroregions on Czech-German border, 2012

Apart from the Czech part of the euroregion there are also other interest associations of municipalities active in the Czech part of the Euroregion, which were established for different reasons and purposes than cross-border cooperation. Their focus is mainly on tourism or environmental protection, e.g. Association of Municipalities Úhlava, Regional Association Šumava, Mikroregion Upper Vltava – Boubínsko and others.

The Šumava – Bayerischer Wald Euroregion will have a central position in the forthcoming European Region Donau – Moldau (Figure 2).

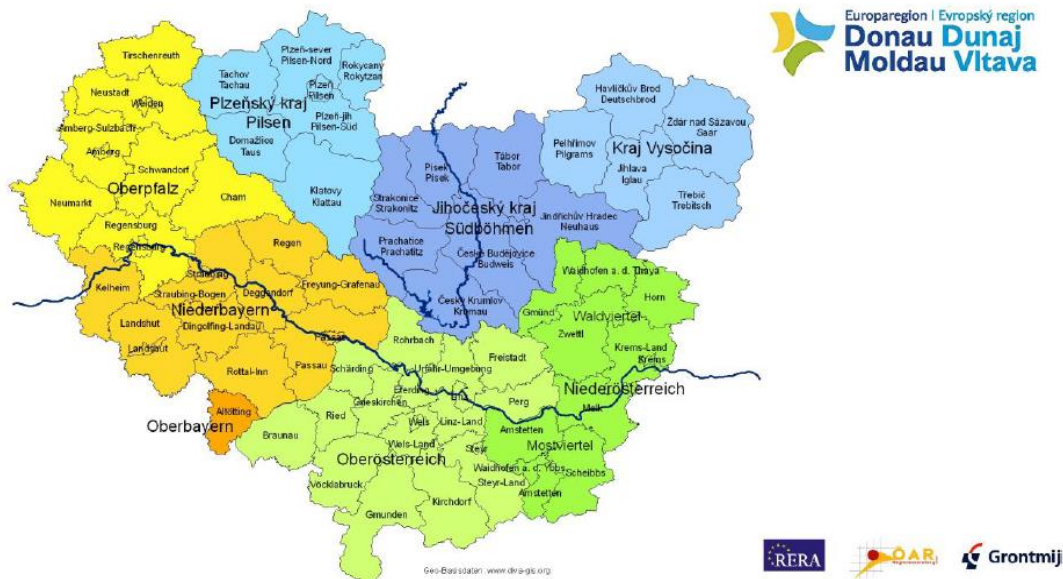


Figure 2: The European Region Donau-Moldau

Source: *Networks and structures analysis of the Euroregion Donau-Moldau. Analysis of potentials. Version 2. 1. 2011. Authority of the Upper Austrian State Government. Linz, p. 180.*

The Šumava Euroregion stretches over the territory of five districts in the Czech Republic (Domažlice, Klatovy, Prachatice, Český Krumlov, and Strakonice). There are seven districts in Bavaria (the *Landkreise* Cham, Deggendorf, Freyung-Grafenau, Passau, Regen, Straubing-Bogen, and since 2004 Rottal-Inn) and additionally two free cities (the *Freistädte* Straubing and Passau). Finally, there are four districts in Upper Austria (Freistadt, Perg, Rohrbach, and Urfahr-Umgebung) making up the territory of the Euroregion as well.

To become a member of this euroregion, the interested town council/municipal council should submit its application. The application is discussed at the next general meeting of the Euroregion. The municipalities pay the member fees, which are calculated per capita (for example the membership fee is 3 CZK per inhabitant for Czech municipalities). There is even a possibility for legal entities to be a member of the Euroregion. In this case the membership fee is 5 000 CZK per year.

The membership of a legal entity terminates by its liquidation, by the leaving of a legal entity from the Association, or by exclusion due to breaking the rules of the cooperation. There is a list of the advantages, which can – according to the Czech secretariat of the Euroregion – be associated with the membership in the Euroregion Šumava-Bayerischer Wald/Unterer Inn-Mühlviertel:

- full information service mainly to municipalities;
- further education concerning the preparation of areas and criteria in projects, respectively programs of cross-border cooperation (Phare CBC, INTERREG programmes, Objective 3, EGTC) ;



- mediation of primary contacts for those interested in cross-border cooperation between municipalities in Bavaria, Upper-Austria and the Czech Republic;
- technical assistance for the application for various projects and further consultation about areas of preparation, process and evaluation of the projects;
- helping through commissions of the Euroregion Šumava-Bayerischer Wald in areas of tourism, economic and regional development, education and culture, ecology, environment, agriculture and forestry;
- representation of the whole region at fairs and through promotional materials.

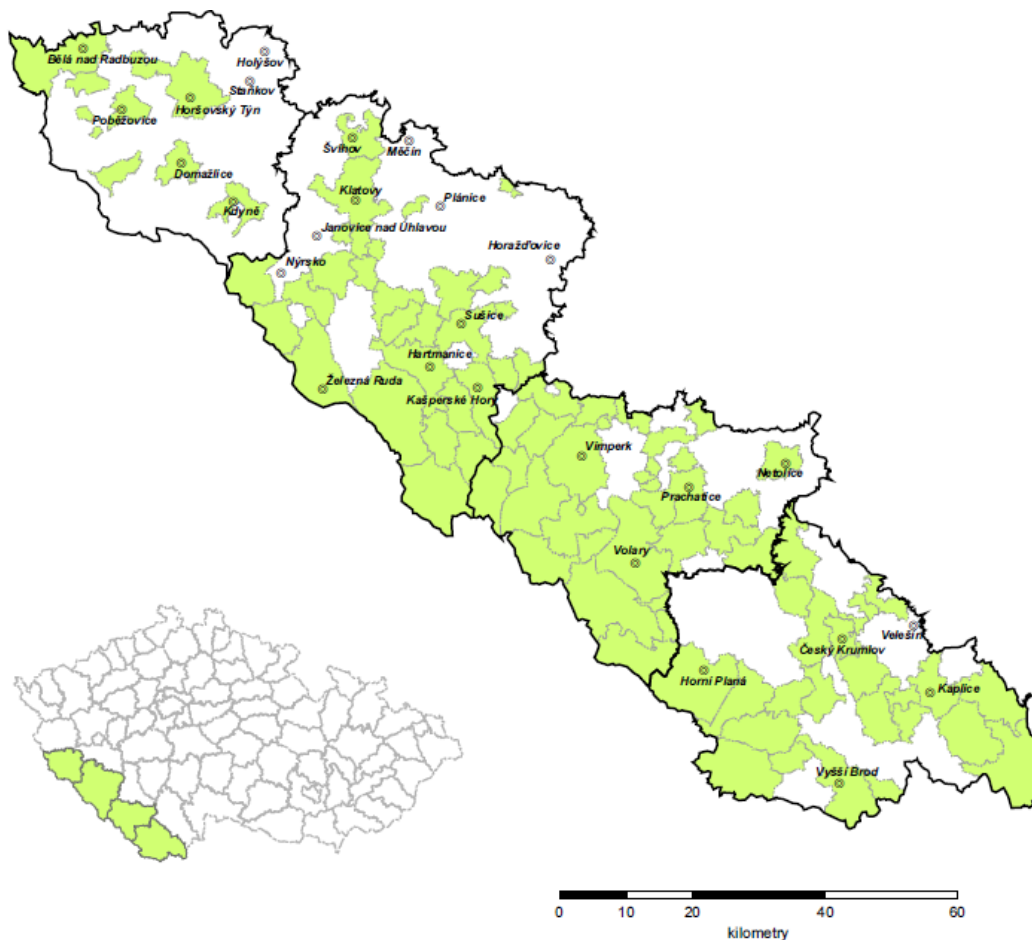


Figure 3: Czech municipalities involved in the Czech part of the Euroregion  
 Source: Czech Statistical Office, 2005

### 4.3 Organisational structure

The structure of the Czech, German, and Austrian parts of the Euroregion is basically the same, however they are institutionally divided. Yet again it must be repeated that Euroregion Šumava-Bayerischer Wald/Unterer Inn-Mühlviertel is made up by three independent entities, bearing the legal form of associations of municipalities (see Table 1).



Table 1: The structure of the euroregion

| Country code | Name of entity   | Seat      | Number of employees |
|--------------|--|-----------|---------------------|
| CZ           | Euroregion Šumava  | Běšiny    | 2                   |
| DE           | EUREGIO Bayerischer Wald - Böhmerwald - Unterer Inn e.V.             | Freyung   | 6                   |
| AT           | EUREGIO bayerischer wald - böhmerwald Regionalmanagement Mühlviertel | Freistadt | 4                   |

Source: own compilation

The highest authority of the Euroregion is a trilateral general meeting, which takes place in one of the participating countries at regular intervals. Communication between these meetings is being ensured by e-newspapers published by all of the participating sections.

The General Assembly is the highest authority in each of the participating organisations. Most members – all of them legal entities – are municipalities, but also regions and various non-profit groups (mostly in Germany and Austria, e.g. Regional Muzeum in Passau, Catholic Educational Institute in Freyung or Regen, or limited companies e.g. Kifas) have been involved as well. A General meeting takes place once a year, usually in the spring.

At the general meeting members are obliged to elect the presidency and President. The length of their mandate is four years and it usually tries to copy elections to municipal council/town council (the last elections in the Czech Republic were in 2014). National presidencies meet at ceremonies once in two years. The president is at the same time a member of the presidency.

Particular working and project groups and even offices with their officers who ensure all the administration, processing annual reports, searching for eligible partnership to realise cross-border subjects, organisation of joint events and propagation, are accountable vis-à-vis the presidency (Figure 4). Following the municipal elections in the Czech Republic, the new presidency met on 3 December 2014.

All three associations co-constituting the euroregion have a similar structure: there is an executive secretary as head of office, being the main executive part of the Association, responsible to the President of the respective national part of the Euroregion. The Czech office consists of two employees; the Austrian and German offices consist of six staff members each. The difference is caused by the fact that both Bavarian as well as Austrian staff-members also act as administrators of the microprojects' scheme of three cross-border cooperation programmes (Bavaria–Czech Republic, Austria–Czech Republic, and Bavaria–Austria). The latter's implementation on the Czech side is conducted by the external Regional Development Agency Šumava.

There are even national commissions for various branches: tourism, culture, sport, education, economy, transport, agriculture, forestry, environment, and ecology. The chairman of



commission is at the same time member of the presidency – to ensure the link to municipalities and to the presidency.

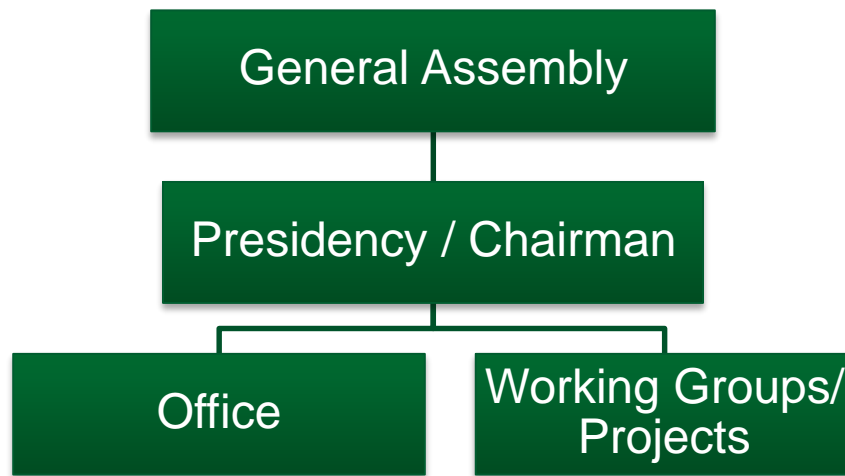


Figure 4: Basic organigram of the Euroregion Šumava-Bayerischer Wald  
 Source: Code of rules of the Šumava Euroregion-Bayerischer Wald 2007 (Zich 2005)

The Bavarian presidency consists of three State counsellors (*Landrat*) from the districts Freyung-Grafenau (President Sebastian Gruber), Cham, and Passau. There are further two representatives in the main committee (State counsellors) from the districts Regen, Deggendorf, Rottal-Inn and Straubing-Bogen. Moreover, there are mayors of towns and municipalities, deputies of the Industrial and Business chamber (*Industrie- und Handelskammer*), former State counsellors as well as representatives of non-profit organisations.

#### 4.4 Main activities

The fundamental objectives of the Association are declared in official documents and are motivated by the idea to „protect indisputable natural and even cultural wealth on the both sides of frontier“. They are:

- to preserve and enhance the native conditions of the whole area;
- to assist to the development of the regional economy;
- to enhance mutual cooperation between regions and coordinate their activities;
- to coordinate the construction of infrastructure that goes beyond the borders of the regions;
- to cooperate with significant institutions (regional authorities, unions of entrepreneurs, and financial institutions) in order to represent the positions and interests of the municipalities in the given region in conjunction with contemporary developmental trends in a particular region;



- to set up conditions for funding of individual projects and guarantee the effective, useful and targeted use of financial resources;
- to develop the self-executive functions of the region (especially main actors – towns and municipalities) ;
- to include the region in the activities of the EU.

The most important activities of the Euroregion are:

- cross-border cooperation, funding and implementing projects developing political, economical, social and cultural thematic areas that are in common interest;
- to represent regional interests and issues;
- to be a point of contact for cross-border projects between Bavaria, Austria, and the Czech Republic;
- to initiate sustainable and innovative projects in the area of regional and economic policy, strengthening regional attraction and competition, and also increasing quality of life in the region;
- to support regional projects during their planning, coordination, and realization;
- consultation focusing on obtaining national and European grants (at EU level, at state level, at federal level, respectively regional level) ;
- to represent the border region at the European level in AEBR;
- informing public about relevant topics of EU;
- active cooperation in building the Euroregion Donau-Moldau.

The Czech part of Euroregion Šumava-Bayerischer Wald defines its main activities as:

- improving and coordinating cross-border cooperation;
- regional representation;
- exchange of information;
- management of Disposition Fund, Cross-border Cooperation Operational Programme Objective 3 Czech Republic – Free State Bavaria in Šumava Region;
- participating in the creation of a developmental strategy and EU programmes.

The Euroregion has an ambition to be a platform for mutual neighbourly meetings, communication, exchange of information, and helping with implementation of cross-border projects. Furthermore, EU funds make up a vast majority of its agenda.



## 5. Composition of the working group

There have been 11 chairmen leading the (national) sub-parts of the Euroregion Šumava-Bayerischer Wald/Unterer Inn-Mühlviertel since its establishment. The Austrian part possesses the biggest stability and continuity because there have been employed only two persons from the beginning. This is undoubtedly contributing to the quality and efficiency of the work. On the other hand there was a high fluctuation in the Czech Republic, but the situation has stabilised by now as the current representative has served more than 15 years, and this is a kind of compensation for the previous fluctuation (see Table 2).

*Table 2: Chairmen of the national parts of the Euroregion*

| Period    | Austria                  | Period    | Czech Rep.          | Period    | Bavaria            |
|-----------|--------------------------|-----------|---------------------|-----------|--------------------|
| 1994-2006 | Alfred Obermüller        | 1993-1996 | Jan Vrána           | 1993-1996 | Ingo Weiss         |
| 2006-     | Gabriele Lackner-Strauss | 1996-1997 | Miroslav Bojanovský | 1996-2002 | Alfons Urban       |
|           |                          | 1997-1998 | Ivan Bečvář         | 2002-2008 | Alexander Muthmann |
|           |                          | 1998-1999 | Ivan Petru          | 2008-     | Ludwig Lankl       |
|           |                          | 1999-     | František Vlček     |           |                    |

*Source: 20 Jahre Euregio / 20 let Euroregionu, 2013*

The organizational arrangement, including the personification of the individual national parts of the Euroregion, can be found in the annexe at the end of the document.





## 6. Main activity fields

One of the principal tasks of euroregions is to work with European sources, which is a substantial part of their activities. This is certainly true for all euroregions with participation of Czech subjects, which have mostly been involved in administering these funds since the very start of their functioning (see for example Böhm 2014). Therefore this chapter will focus on the description of the work of the euroregion with European funds. The chapter will be divided into two parts: the first describing the cooperation topics and the second analysing the use of individual CBC operational programmes relevant for this trilateral border region.

This part of the study is based on an analysis of the web pages of the Euroregion, i.e. that of the Czech part. There, since 2006, the secretariat has been providing information about various activities in the “News” section. In the frame of the methodological procedure we have chosen three criteria, through which the particular activities (records, etc.) can be documented.

### 6.1 Topical orientation

As for the topical orientation, there are some complex matters which cannot be unequivocally classified within a distinct theme. We have included them in ‘regional development’. This information belongs to such cases where neither the subject nor the event is specified; however, its realization is secured by a municipality or by the region. The second group is represented by the activities that can be precisely identified, or, divided into widely used specializations. As Table 3 confirms, we can mostly find generally conceived activities related to the development of a particular area, or activities secured by the public administration.

*Table 3: Topical orientation of the presented activities of Euroregion Šumava-Böhmerwald/Unterer Inn-Mühlviertel*

| Orientation                             | Number |
|---|--------|
| reg. development / publ. administration | 29     |
| tourism                                 | 17     |
| education                               | 8      |
| sport                                   | 7      |
| transportation                          | 4      |
| economy                                 | 3      |
| culture                                 | 2      |
| healthcare                              | 1      |

*Source: own research*

As for the specified activities, tourism leads without any doubts. This situation can be perceived as understandable, as a consequence of this being a region with both small and large protected areas (incl. national parks) as well as with cultural and historic monuments. Education and sport



took the second and third spots. Interestingly, during the whole observed programming period (2007-2013), free time activities, technical infrastructure, agriculture, forestry, or ecology have not succeeded once. At the same time, we are convinced that even these groups conducted important activities that would surely deserve some publicity.

In the second investigation we have looked at who “stands” behind the particular activities. The actors, stakeholders or players, as they are usually described, were – based on the prime inquiries – determined according to their rank level and institutional position, as showed in Table 4.

On the first two spots we see a set of various non-profit organizations as well as the Euroregion Šumava-Böhmerwald/Unterer Inn-Mühlviertel, supplemented with particular regional development agenda (where appropriate). This can be considered as favorable, as it confirms the importance of the institution investigated; at the same time it shows the operation and importance of civic activities (society) abroad. Then, regional, national, and municipal institutions follow. Municipalities concentrate on partial, territorially relatively limited activities, so their representation is relatively low.

*Table 4: Actors of the presented activities of Euroregion*

| Actors                        | Number |
|-------------------------------|--------|
| non-profit organizations      | 34     |
| Euroregion incl. RDA          | 33     |
| region, land                  | 21     |
| state (e.g., police)          | 14     |
| municipality                  | 6      |
| district, AD MEP, microregion | 5      |
| school                        | 4      |
| EU                            | 2      |
| chambers                      | 2      |

*Source: own research*

Finally, the third criterion pays attention to the territorial aspect, i.e. the spatial location. Most active are particular localities, usually towns. However, otherwise defined places (e.g. natural formations) are no exception. In the more particular classification we distinguish Czech localities and localities in the German and Austrian border area; on a higher level we observe in one shot, because it is among others impossible to differentiate the area because of “transborderness”.

Following our analysis, we can state that the set of the mentioned localities is relatively rich, which demonstrates that the border activities are more or less effective. In the Czech part, 56 localities are declared; the most commonly represented can be found in Table 5. The district town of Klatovy leads the imaginary chart, followed by other towns of this category, together



with two regional cities. The remaining localities have an entirely specific position. Železná Ruda can symbolize both the (former) division and the present cooperation within a so-called double town (with Bayerisch Eisenstein). In Běšiny the secretariat of the Czech part has the seat and, among others, many meetings take place there. 48 foreign localities succeeded, none of them being in Austria! Can we possibly conclude that the Austrian part gets less (the least) involved in border cooperation? Usually the district towns as administrative centers succeed – see Chart 8 above. On a regional level there are 20 examples in total, dominated – across all the criteria – by Šumava as a whole, i.e., including all the three parts. This position is stressed by both national parks being listed. Then the administration structures on the NUTS3 level follow, while Plzeň/Pilsen region (subjectively, or via public relations) appears to be the most active one.

Table 5: Local determination of the presented activities of Euroregion

| Czech Republic   | n | Bavaria / Austria   | n | localities          | n  |
|------------------|---|---------------------|---|---------------------|----|
| Klatovy          | 8 | Freyung             | 6 | Šumava Euroregion   | 22 |
| Železná Ruda     | 8 | Regen               | 5 | Plzeň Region        | 9  |
| Plzeň            | 7 | Deggendorf          | 5 | Danube-Moldau       | 6  |
| České Budějovice | 6 | Freyung-Grafenau    | 4 | NP Šumava           | 6  |
| Běšiny           | 6 | Zwiesel             | 4 | Upper Austria       | 4  |
| Český Krumlov    | 3 | BayerischEisenstein | 3 | Lower Austria       | 4  |
|                  |   | München             | 3 | NP Bayerischer Wald | 4  |
|                  |   |                     |   | South Bohemia       | 3  |

Source: own research

## 6.2 EU funded initiatives

We first analyse this part from the perspective of the various parts (Czech-Bavarian, respectively Czech-Austrian). Afterwards we focus on the whole Euroregion from a trilateral angle. Concerning the project scope we go from the major projects with high allocation down to smaller ones. We will work with the data until the end of 2013, as the newer ones are not eligible at the moment.

The CBC programmes, which during 2014-2020 return to the initial name “INTERREG”, offer two principal ways of the project support: the so-called microprojects’ scheme (in some places called as Disposition or Small Projects Fund), which support smaller “people-to-people” projects with a maximum budget set up to 30 000 Euros; and “normal” big projects requiring higher sums. The euroregions mostly act as the administrators of these microprojects’ schemes, which provide them with unique competence and finances for their own staff dealing with the administration of these smaller grants. This is also the case for all three national associations composing the Euroregion Šumava-Bayerischer Wald/Unterer Inn-Mühlviertel. As mentioned previously, the Austrian and Bavarian associations do this job by the means of their own



employees, whereas the Czech part outsourced this task to the Regional Development Agency Šumava.

Besides their very prominent administrator's role in distributing these small funds the three member association of the Euroregion Šumava-Bayerischer Wald/Unterer Inn-Mühlviertel can also act as project promoters in the three above mentioned ERDF funded CBC programmes, and they often do so.

The principal source of funds was a program of cross-border cooperation: Objective 3 **Czech Republic-Free State of Bavaria** 2007-2013. This program aimed to promote cross-border economic, cultural and communal cooperation; the development of tourism; the support of education and social integration; the improvement of transport accessibility in the cross-border region as well as the protection of the environment. In case of programmes related to cross-border cooperation, the cross-border impact of the project is a very important aspect; both sides of the border should benefit from the project. Projects must also include beneficiaries from both countries who work together at least in two of the following ways: joint preparation, joint implementation, joint utilization of working staff and joint financing.

The program of cross-border cooperation - Objective 3 Czech Republic-Free State of Bavaria 2007-2013 (Objective 3 Czech Republic-Bavaria) belongs to the Objective 3 strand (European Territorial Cooperation programmes). There is an amount of 115,51 million EUR allocated for the programme in the European Regional Development Fund (ERDF). This amount shall be increased by another sum of 20,38 million EUR taken from Czech and German national public resources. Objective 3 programme Czech Republic - Bavaria contains two priority axes dividing the operating program into logical units. The logical units are further specified by means of so-called support areas that define the types of projects that may be supported within a particular priority axis. The following priority axes were defined:

- Economic development, human resources and networks;
- Development of territory and the environment.

The main objective of the European Territorial Cooperation **Austria-Czech Republic** 2007-2013 focuses on improving the transportation accessibility of the cross-border region, protection of the environment, support for development of cross-border infrastructure and tourism services, support for education and social integration, support for cooperation of economic entities and technology transfer, as well as support for cross-border cooperation of local governments on both sides of the border. The operating project of Austria - Czech Republic is intended for the regions of South Bohemia, South Moravia and Highlands (Vysočina) on the Czech side and the regions of Waldviertel, Weinviertel, Wiener Umland Nordteil, Mühlviertel and Vienna City on the Austrian side.

The Operational Programme Austria-Czech Republic belongs also to the family of the Objective 3 programmes of the European Territorial Cooperation. It was supported by the European



Regional Development Fund with the amount of 107,44 million Euros. This amount was increased by other funds taken from Czech and Austrian national sources. Regarding the Czech side, they planned to use the amount of 69,12 million EUR from the EU funds. In case of operational programmes related to cross-border cooperation, cross-border impact of the project is a very important aspect; both sides of the border should benefit from the project. Projects must also include beneficiaries from both countries who work together at least in two of the following ways: joint preparation, joint implementation, joint utilization of working staff, and joint financing. The OP Austria-Czech Republic contains three priority axes dividing the operating program into logical units. The logical units are further specified by means of so-called activity areas that define types of projects that may be supported within a particular priority axis. The following priority axes were defined:

- socio-economic development, tourism, and transfer of know-how;
- regional accessibility and sustainable development; and
- technical assistance.

These priorities have been implemented by the means of following measures:

- 1.1 Infrastructure and business related services
- 1.2 Tourism, culture and economy of leisure time
- 1.3 Development of human resources, labour market, education and qualification
- 1.4 Social integration, prevention from health and social risks
- 2.1 Transportation and regional accessibility
- 2.2 Environment and risk prevention
- 2.3 Sustainable networks and structures of institutional cooperation

Similarly, as cross-border cooperation was (is) supported on the Czech border, the "remaining" section is addressed by the INTERREG IV A programme **Bavaria-Austria**. It was expected that the cross-border cooperation would be supported by an aggregate amount of 54.1 million Euros from the ERDF in the programming period of 2007- 2013, for the entire subsidy territory. The following topics were selected to serve as priorities of the programme:

### 1. Research-oriented and competitive society through innovation and cooperation:

- General economic conditions for strengthening entrepreneurial initiative;
- Innovative activities in both regional and local economies of leisure time;
- Just like the cross-border labour market through qualifications and lifelong learning. This is how we try to strengthen human resources.

### 2. Attractive living space through sustainable regional development:

- Cross-border territorial development through sustainable networking and cooperating structures;



- Protection of the environment and nature as well as sustainable regional development
- Improvement of accessibility;
- Strengthening and cooperation in the fields of health and social care;
- Strengthening regional identity.

This programme is implemented in the area through districts (*Landkreise*). On the Bavarian side there are for example the following districts: Freyung-Grafenau, Passau, Rottal-Inn. Exceptionally, projects of Deggendorf or Regen districts (distant ones seen from the Euroregion Šumava-Bayerischer Wald/Unterer Inn-Mühlviertel) may be supported, too.

Regarding the current programming period 2014-2020, we can only mention priority axes yet. The amounts for individual border sections (operational programmes of cross-border cooperation will yet again bear INTERREG titles) are just being determined. By looking at Table 6 it is clear that only some of the eleven thematic objectives announced by the EU Strategy 2020 were applied in the Czech borderlands; most of them for the section of Czech Republic-Saxony (5), least of them for the section of Bohemia-Bavaria (2 only): (1.) strengthening of research, technological development and innovations (6.); protection of the environment and support for efficient use of resources.

*Table 6: Priority axes of cross-border cooperation for the Czech borderlands for the period of 2014-2020*

| Specification  | Sax | Bav | AT | SK | PL |
|--|-----|-----|----|----|----|
| 1. Strengthening of research, technological development and innovations                          |     | Bav | AT | SK |    |
| 5. Support for adaptation to climate change, risk prevention and risk management;                | Sax |     |    |    | PL |
| 6. Protection of the environment and support for efficient use of resources;                     | Sax | Bav | AT | SK |    |
| 7. Support for sustainable transport and elimination of barriers in key network infrastructures; | Sax |     | AT | SK |    |
| 8. Support for employment and support labour staff mobility;                                     |     |     |    |    | PL |
| 10. Investment in education, skills and lifelong learning;                                       | Sax |     | AT |    | PL |
| 11. Strengthening of institutional capacity and efficient public administration                  | Sax |     | AT | SK | PL |

*Source: MRD CZ (Ministry Of Regional Development CZ)*



There are four priority axes that were not enforced in the Czech borderlands at all. They are the following:

2. Improvement of accessibility, use and quality of information and communication technologies;
3. Increasing of competitiveness of small and medium-sized enterprises; agricultural sector (EZFRV) and the sector of fisheries and aquaculture (EMFF);
4. Support for transition to a low-carbon economy in all sectors;
9. Support for social integration and struggling against poverty.

A further part of the case study tries to illustrate the distribution of funds in CBC programmes. This picture will be centred around the Czech part of the euroregion, as the authors found most of the accessible information sources on this side of the border.

### OP Bavaria – Czech Republic

The ERDF supported so far more than 300 major projects with more than 152 million € under the Framework of the Bavarian-Czech Programme. Significantly more money is obtained by German subjects than Czech ones, on the other hand Czech subjects enjoy also 5% of national co-financing that partly compensates for the imbalance. The projects are selected by Monitoring Committees (MCs), and the number of selected projects varies between 10 (during the 11<sup>th</sup> MC meeting) and 80 (during the 5<sup>th</sup> MC meeting). The average amount per project varies according to the programme priorities addressed by individual calls. Generally, we can observe its gradual decrease (from max. 718 000 down to 142 000 Euros).

Table 7: Global data on OP CBC Bavaria – Czech Republic 2007-2013 (in €)

| Monitoring Committee  | Grant         |                      |            |              | Total      | Nr. Of projects | Average value |
|-----------------------|---------------|----------------------|------------|--------------|------------|-----------------|---------------|
|                       | ERDF: Bavaria | ERDF: Czech Republic | ERDF total | Czech budget |            |                 |               |
| 2. MC<br>26. 6. 2008  | 14 853 289    | 15 498 954           | 30 352 243 | 988 174      | 31 340 416 | 47              | 666 817       |
| 3. MC / OP            | 367 963       | 2 693 011            | 3 060 974  | 158 412      | 3 219 386  | 2               | 1 609 693     |
| 4. MC<br>15. 10. 2008 | 7 460 823     | 5 944 637            | 13 405 460 | 200 442      | 13 605 902 | 28              | 485 925       |
| 5. MC<br>18. 3. 2009  | 9 842 839     | 10 975 264           | 20 818 103 | 543 939      | 21 362 042 | 80              | 267 026       |
| 6. MC<br>8. 12. 2009  | 12 151 657    | 6 162 520            | 18 314 177 | 344 237      | 18 658 414 | 26              | 717 631       |
| 7. MC<br>15. 6. 2010  | 4 448 803     | 4 046 614            | 8 495 417  | 390 593      | 8 886 011  | 20              | 444 301       |
| 8. MC<br>16. 6. 2011  | 7 421 277     | 2 365 858            | 9 787 135  | 97 922       | 9 885 057  | 30              | 329 502       |
| 9. MC / OP            | 284 966       | 0                    | 284 966    | 0            | 284 966    | 2               | 142 483       |



| Monitoring Committee   | Grant             |                      |                    |                  | Total              | Nr. Of projects | Average value  |
|------------------------|-------------------|----------------------|--------------------|------------------|--------------------|-----------------|----------------|
|                        | ERDF: Bavaria     | ERDF: Czech Republic | ERDF total         | Czech budget     |                    |                 |                |
| 10. MC<br>7. 12. 2011  | 2 058 948         | 4 752 123            | 6 811 070          | 280 888          | 7 091 958          | 18              | 393 998        |
| 11. MC<br>10. 5. 2012  | 1 536 615         | 1 720 082            | 3 256 697          | 27 251           | 3 283 947          | 10              | 328 395        |
| 12. MC<br>14. 11. 2012 | 1 553 266         | 3 287 006            | 4 840 272          | 171 353          | 5 011 625          | 23              | 217 897        |
| 13. MC<br>10. 6. 2013  | 1 102 002         | 1 011 200            | 2 113 202          | 59 120           | 2 172 322          | 14              | 155 166        |
| 14. MC<br>19. 11. 2013 | 1 253 809         | 1 523 116            | 2 776 925          | 75 138           | 2 852 063          | 17              | 167 768        |
| <b>Total</b>           | <b>64 336 256</b> | <b>59 980 384</b>    | <b>124 316 640</b> | <b>3 337 471</b> | <b>127 654 110</b> | <b>317</b>      | <b>402 694</b> |

Source: <http://www.strukturalni-fondy.cz/cs/Microsites/CR-Bavorsko/Cil-3-Ceska-republika-Svobodny-stat-Bavorsko-200/Projekt>

Table 8 shows the division of projects per priorities and it clearly shows that approximately 62% of them go for Priority 1. 247 projects were subject of our interest: we were interested in the fulfilment of the prescribed (four) criteria of cross-border projects, of which at least two were mandatory:

- Preparation;
- Implementation;
- Personal;
- Finances.

Whereas preparation and realisation were always joint, the fulfilment of the other two criteria is quite rare and exceptional. In the 2014–2020 programming period, the fulfilment of at least three criteria will be made compulsory.

Table 8: Allocation according to priorities and fulfilling of the four criteria

|                      | Priority 1        | Priority 2        | Total              |
|----------------------|-------------------|-------------------|--------------------|
| ERDF – grant (in €)  | 72 222 559        | 43 287 890        | 115 510 449        |
| Co-financing         | 12 745 158        | 7 639 040         | 20 384 198         |
| <b>Total costs</b>   | <b>84 967 717</b> | <b>50 926 930</b> | <b>135 894 647</b> |
| Joint preparation    | 169               | 78                | 247                |
| Joint implementation | 153               | 75                | 228                |
| Joint financing      | 12                | 3                 | 15                 |
| Joint personal       | 4                 | 0                 | 4                  |
| <b>Total</b>         | <b>169</b>        | <b>78</b>         | <b>247</b>         |

Source: own elaboration





The following tables offer a view inside: firstly, the allocation of ERDF funds among the national parts (Table 9.), afterwards the structure of resources. A total amount of 115 million Euros go for Bavaria in a ratio of 52:48. The share of the ERDF co-financing increased with more advanced programme implementation, which is valid for both parts of the border.

Table 9: ERDF Bavaria – Czech Republic

| Year         | ERDF               | Bavaria           | CZECH REP.        |
|--------------|--------------------|-------------------|-------------------|
| 2007         | 15 133 604         | 7 810 202         | 7 323 402         |
| 2008         | 15 501 398         | 8 018 660         | 7 482 738         |
| 2009         | 15 944 273         | 8 285 632         | 7 658 641         |
| 2010         | 16 466 416         | 8 614 440         | 7 851 976         |
| 2011         | 17 003 066         | 8 953 086         | 8 049 980         |
| 2012         | 17 484 107         | 9 245 270         | 8 238 837         |
| 2013         | 17 977 585         | 9 545 560         | 8 432 025         |
| <b>Total</b> | <b>115 510 449</b> | <b>60 472 850</b> | <b>55 037 599</b> |

Source: [www.euregio.cz](http://www.euregio.cz)

Table 10: Differences of the composition of a grant from the programme and the share of national and private sources in both countries.

|                   | ERDF               | Public Sources   | Private Sources   | National sources total | Total costs        |
|-------------------|--------------------|------------------|-------------------|------------------------|--------------------|
| <b>CZECH REP.</b> |                    |                  |                   |                        |                    |
| Priority 1        | 33 022 559         | 5 244 760        | 582 751           | 5 827 511              | 38 850 070         |
| Priority 2        | 22 015 040         | 3 729 607        | 155 400           | 3 885 007              | 25 900 047         |
| <b>total</b>      | <b>55 037 599</b>  | <b>8 974 367</b> | <b>738 151</b>    | <b>9 712 518</b>       | <b>64 750 117</b>  |
| <b>BAVARIA</b>    |                    |                  |                   |                        |                    |
| Priority 1        | 39 200 000         | 0                | 6 917 647         | 6 917 647              | 46 117 647         |
| Priority 2        | 21 272 850         | 0                | 3 754 033         | 3 754 033              | 25 026 883         |
| <b>total</b>      | <b>60 472 850</b>  | <b>0</b>         | <b>10 671 680</b> | <b>10 671 680</b>      | <b>71 144 530</b>  |
| <b>TOTAL</b>      |                    |                  |                   |                        |                    |
| Priority 1        | 72 222 559         | 5 244 760        | 7 500 398         | 12 745 158             | 84 967 717         |
| Priority 2        | 43 287 890         | 3 729 607        | 3 909 433         | 7 639 040              | 50 926 930         |
| <b>total</b>      | <b>115 510 449</b> | <b>8 974 367</b> | <b>11 409 831</b> | <b>20 384 198</b>      | <b>135 894 647</b> |

Source: own data of the Euroregion



Table 11: Euroregion Šumava-Bayerischer Wald/Unterer Inn–Mühlviertel success rate in the monitoring committees meetings of the OP CBC Bavaria-Czech Republic in 2007-2013 (in €)

| Monitoring Committee, place, date    | Specification                                       | ERDF       | Czech national budget |
|--------------------------------------|---|------------|-----------------------|
| 2. MC Prachatice<br>26.6.2008        | total   | 14 104 100 | 287 722               |
|                                      | without precise definition of place of intervention | 4 258 199  | 139 139               |
| 3. MC / OP                           | total   | 3 060 974  | 158 412               |
| 4. MC Frauenau<br>15.10.2008         | total   | 12 340 571 | 153 452               |
|                                      | without precise definition of place of intervention | 2 005 835  | 42 416                |
| 5. MC Loket n. O.<br>18.3.2009       | total   | 15 315 884 | 340 326               |
|                                      | without precise definition of place of intervention | 4 876 671  | 48 829                |
| 6. MC Selb<br>8.12.2009              | total   | 8 325 195  | 229 389               |
|                                      | without precise definition of place of intervention | 688 500    | 5 262                 |
| 7. MC<br>15.6.2010                   | total   | 5 493 339  | 334 176               |
|                                      | without precise definition of place of intervention | 1 985 674  | 297 751               |
| 8. MC Lam<br>16.6.2011               | total   | 6 129 767  | 90 579                |
|                                      | without precise definition of place of intervention | 2 141 154  | 27 290                |
| 9. MC / OP Chodová Planá             | total   | 284 966    | 0                     |
|                                      | without precise definition of place of intervention | 284 966    | 0                     |
| 10. MC Český Krumlov<br>7.12.2011    | total   | 4 945 345  | 225 151               |
|                                      | without precise definition of place of intervention | 778 566    | 16 462                |
| 11. MC Deggendorf<br>10.5.2012       | total   | 2 346 900  | 21 686                |
|                                      | without precise definition of place of intervention | 74 991     | 4 411                 |
| 12. MC Mariánské Lázně<br>14.11.2012 | total   | 3 552 549  | 110 005               |
|                                      | without precise definition of place of intervention | 0          | 0                     |
| 13. MC Kulmbach<br>10.6.2013         | total   | 1 219 787  | 28 759                |
|                                      | without precise definition of place of intervention | 769 196    | 15 348                |
| 14. MC Železná Ruda<br>19.11.2013    | total   | 2 316 205  | 56 385                |
|                                      | without precise definition of place of intervention | 822 230    | 12 346                |
| TOTAL                                | total   | 79 435 581 | 2 036 044             |
|                                      | without precise definition of place of intervention | 18 685 982 | 609 254               |

Source: <http://www.strukturalni-fondy.cz/cs/Microsites/CR-Bavorsko/Cil-3-Ceska-republika-Svobodny-stat-Bavorsko-200/Projekty>



Figure 5 shows that a significant part of all funds was used at the beginning of each programming period: more than half during the second, fourth, and fifth monitoring committee sessions. It was not always possible to determine the territorial impact of the projects, for example where only the region of intervention was mentioned or project partner develops its activities in the territory of the whole region.

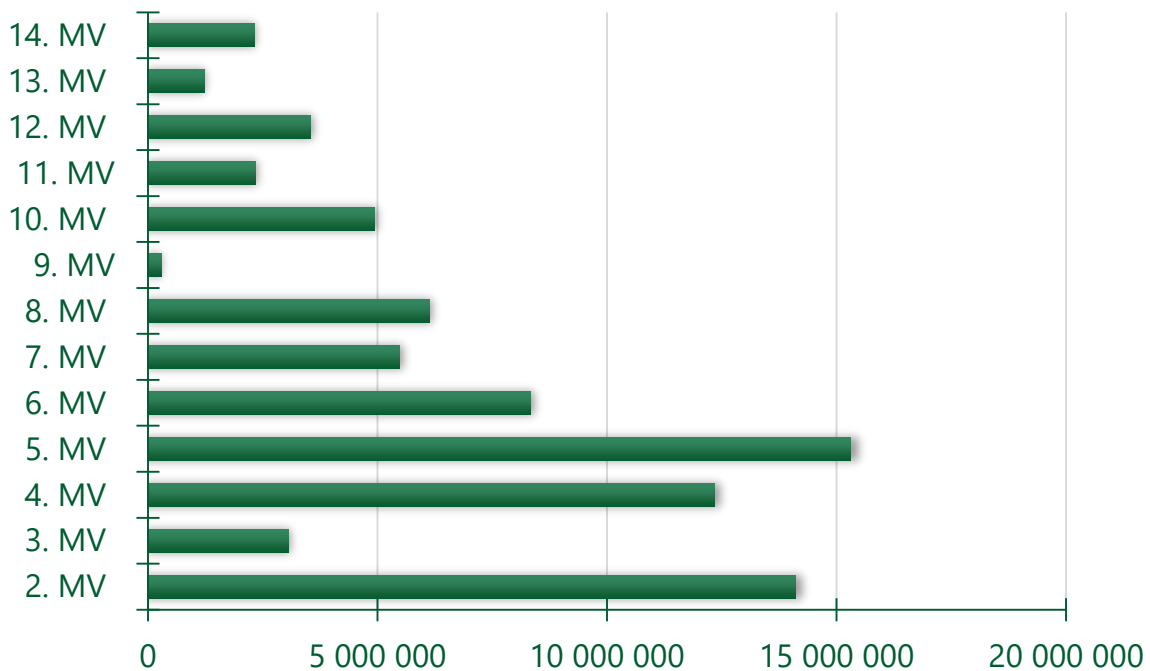


Figure 5: The ERDF support for Czech-Bavarian projects from Euroregion Šumava-Böhmerwald/Unterer Inn-Mühlviertel (in €)

Source: <http://www.strukturalni-fondy.cz/cs/Microsites/CR-Bavorsko/Cil-3-Ceska-republika-Svobodny-stat-Bavorsko-200/Projekty>



### The OP CBC Austria – Czech Republic

The OP CBC Austria–Czech Republic influences the Euroregion Šumava-Böhmerwald/Unterer Inn-Mühlviertel territory only partially, which is also mirrored in the small number of supported projects from that territory; just 12 out of totally 132 implemented projects come from there.

Table 12: Czech-Austrian cross-border projects in Euroregion (in €)

| Project title                    | Project topic        | Partners   | Allocation  |
|----------------------------------|----------------------|--|---|
| MSB-innocat                      | innovation           | RDA, park / 3 technological centres                    | JČ / Rohrbach, Freistadt-Mühlviertel  |
| Lipensko-Mühlviertel             | tourism              | 2 municipalities and their service bodies, RERA / GmbH | JČ, Přední Výtoň, Lipno nad Vltavou, Kovářov                                  |
| Cyklo Lipensko-Mühlviertel       | tourism, sport       | 2 municipalities, foundation / tourism cluster 4x      | Přední Výtoň, Lipno nad Vltavou / Schönegg, Böhmerwald, Mühlviertler Kernland |
| The regional exposition 2013     | regional development | RDA, museum / OÖ, RM OÖ                                | Český Krumlov, JČ / OÖ  |
| Floating channel                 | tourism              | Forrests of the CZ / Tourismusverband                  | NP Šumava / Böhmerwald  |
| WHITE TRACK                      | tourism, sport       | municipalities 2x, club / Tourismusverband             | Nová Pec, Horní Planá, Trojmezí / Böhmerwald                                  |
| Kunsth Handwerk                  | culture              | Vocational school                                      | Český Krumlov / OÖ  |
| Joint Rescue Services Activities | health-care          | Water rescue service                                   | Český Krumlov   |
| Garden Therapy                   | health-care          | Hospital, school, house of seniors                     | Prachatice  |
| Cyclo-track Horní Planá          | tourism              | Municipality, tourism union                            | Horní Planá / Böhmerwald  |
| Euroregion OÖ/JČ 2010-2012       | regional development | RDA / RM OÖ  | Šumava  |
| Euroregion OÖ/JČ 2013-2014       | regional development | RDA / RM OÖ  | Šumava  |

Source: [http://www.at-cz.eu/at-cz/downloads/ETC-AT-CZ-List-of-Beneficiaries\\_140402.pdf](http://www.at-cz.eu/at-cz/downloads/ETC-AT-CZ-List-of-Beneficiaries_140402.pdf)



Table 13: Financial aspects of these projects

| Project title                    | ERDF      | National co-financing | Total     | Year of implementation |
|----------------------------------|-----------|-----------------------|-----------|------------------------|
| MSB-innocat                      | 423 560   | 145 374               | 568 934   | 2012                   |
| Lipensko-Mühlviertel             | 1 179 924 | 255 922               | 1 435 846 | 2009                   |
| Cyklo Lipensko-Mühlviertel       | 1 256 668 | 515 422               | 1 772 090 | 2010                   |
| The regional exposition 2013     | 498 466   | 190 321               | 688 787   | 2011                   |
| Floating channel                 | 727 830   | 128 442               | 856 272   | 2012                   |
| WHITE TRACK                      | 115 751   | 20 427                | 136 178   | 2013                   |
| Kunsthandwerk                    | 296 580   | 52 338                | 348 918   | 2013                   |
| Joint Rescue Services Activities | 408 527   | 83 092                | 491 619   | 2010                   |
| Garden Therapy                   | 1 481 039 | 474 277               | 1 955 316 | 2012                   |
| Cyclo-track Horní Planá          | 361 420   | 63 780                | 425 200   | 2012                   |
| Euroregion OÖ/JČ 2010-2012       | 367 698   | 115 366               | 483 064   | 2010                   |
| Euroregion OÖ/JČ 2013-2014       | 180 172   | 211 810               | 391 982   | 2013                   |

Source: [http://www.at-cz.eu/at-cz/downloads/ETC-AT-CZ-List-of-Beneficiaries\\_140402.pdf](http://www.at-cz.eu/at-cz/downloads/ETC-AT-CZ-List-of-Beneficiaries_140402.pdf)

Whereas Table 12 deals with the projects' content, Table 13 focuses on their financial aspects. Most of the activities concentrated on tourism or tourism extended with elements of regional development. The partners differ as far as their typology is concerned (we can observe the representatives of all municipalities, RDAs, NGOs, etc). Most of the projects concerned are targeting a broader territory, e.g. a national park or a region. Out of the total sum of appr. 9,9 million Euros, 75% is provided by the ERDF and the rest by national public or private sources.

### Best practices – major projects

The representatives of the EUREGIO identified the following projects as the most representative ones:

- Talent Regio - Life and work without borders;
- Centrum granite Hauzenberg;
- The park Bogen-Slavonice;
- House Ludwigsthal Wilderness National Park;
- Town hall Deggendorf with the German-Czech contact office;
- Tourist Destination Management Bavarian Forest-Forest / Bayerischer Wald-Böhmerwald;



- 1000 Years of Golden Path;
- Biking in the valley of the Danube;
- We are Europe! ;
- Day of European cooperation in the Czech Krumlov;
- Flood control measures for Malše River;
- Crafts without borders;
- Establishment of new stops in Bucina - boundaries and turnabout for buses;
- 20<sup>th</sup> anniversary of the reopening of the railway route Iron Ore and Bayerisch Eisenstein;
- Disposition Fund CBC program Objective 3 Czech Republic - Free State of Bavaria and the Small Projects Fund Objective 3 European Territorial Cooperation Czech Republic-Austria 2007-2013;
- Cross-border Provincial Exhibition Upper Austria - South Bohemia "Old Tracks - new ways";
- Learning trip to Czech-Bavarian information centers;
- After castles country roads from the Danube Malse;
- The Jewish Cemetery in Rozmberk;
- Groove Castle.<sup>1</sup>

### We are Europe! Talents, perspectives, future in the region of Pilsen and the Upper Palatinate



Source: <http://www.bbkult.net/>

This project is a joint initiative of the Regional marketing Upper Palatinate / Oberpfalz Regionalmarketing and the Chamber of Commerce / Industrie und Handelskammer Regensburg for the Upper Palatinate / Kelheim and Pilsen region.

The regions of Pilsen Region and Upper Palatinate as well as their towns have significantly benefited from brisk business and tourism between East and West. After a number of policy

---

<sup>1</sup> Annotations of these projects come from the respective websites and interviews with Euroregion Šumava-Böhmerwald/Unterer Inn-Mühlviertel representatives.



changes in the 21<sup>st</sup> century, the chance of this transborder cooperation re-emerged with the capacity of becoming a symbol of the united Europe without borders.

Why live, work, and play in the region Plzeň-Upper Palatinate? One could find countless career opportunities in worldwide known companies, renowned colleges and universities, cross-border cooperation, contact networks, and a wide range of leisure activities for everyone. The aim is to give specific impulses to learn from and network with Bavarian and Czech entrepreneurs. The Bavarian-Czech border region has an advantageous geographical location in Central Europe with a significant number of innovative small and medium-sized enterprises. Nine measures are planned with a variety of topics ranging from cross-border traffic arrangements to joint training activities and cluster cooperation in the field of mechatronics. The total project budget was 2,1 million Euros.

### **The tourist infrastructure around Dragon Lake**

Upper Palatinate, Pilsen Region, the City of Furth im Wald, and the Office of Water Management/ Wasserwirtschaftsamt Regensburg

In 2009, a new flood tank was filled with "Dragon Lake" in the border region around Furth im Wald - Eschlkam. Besides flood protection it aims to improve tourism infrastructure, and its catchment area involves both sides of the border. One of the tools should be cross-border cooperation, which should help to achieve the project objectives. The project includes the construction of parking places, buildings for water sports, an information pavilion, nature trail, and a bicycle station. This will provide a natural jewel that is unique and combines four areas: leisure, ecology, experience from sheer nature, and an economic zone.

### **The Czech-German vocational education class for the field of machinery**

Upper Palatinate, Pilsen Region

The aim of the project is to model a common dual education of young people from the Czech Republic and Bavaria, under a joint training to achieve professional (European) qualifications and to give an example of a best practice. The project should show that vocational education can be conducted on a cross-border basis in the Czech-Bavarian border area. The project plans the apprenticeship of at least eight young Germans (finished primary school) and eight young Czechs within a two-year apprenticeship "Plant and machine operators". It will be done together at German and Czech companies. The theoretical parts will be provided in the vocational school Europa-Berufsschule Weiden (DE) and in the Secondary school of Tachov (CZ). Before and during the apprenticeship period, language courses will be offered to both German and Czech participants in order to improve their language skills in the specific vocational field. This approach will be complemented by an excursion and joint action/project days, which will make apprentices familiar with the culture of both countries. In addition to a successful



apprenticeship of all young people involved, the project will also help to build a network between the two schools.

### The website of three regions - South Bohemian Region, Upper Austria, and Lower Bavaria

Documents prepared by the working group, which was composed of representatives from the following institutions:

- Regional Office for Non-governmental Bavarian Museum / Landesstelle für die nichtstaatlichen Museen in Bayern;
- Region Lower Bavaria / Bezirk Niederbayern;
- Office for Rural Development of Lower Bavaria / Amt für Entwicklung Ländliche Niederbayern;
- Association of the Upper Austrian museums / Verbund Oberösterreichischer Museen;
- Prácheňské Museum in Pisek;
- South Bohemian Regional Authority;
- Euregio Bavarian Forest - Šumava - Lower Inn / Bayerischer Wald-Böhmerwald-Unterer Inn;
- The company Theorie & Praxis, Passau.

Bilingual database, with search options, originated as a project associating printed publication "Guide to museums" of these three countries. The initiative came from South Bohemia and Prácheňské Museum in Pisek. The database has a unique information base about more than 200 museums with information about their history, which is a valuable offer to the visitors. Pictures are attached to individual objects or exposures. One can view detailed information about each museum (e.g. opening hours, contacts, services offered, etc.). Individual museums are also classified into different categories according to their focus and specialization, like Architecture, Geology, Historical interiors, Mining, Shipping and Rafting Ethnology, Personalities, Beer & Crafts, Religious monuments, contemporary history, or Golden Path.

### Disposition Fund

#### "Wild as an Animal III - local projects"

Lower Bavaria, Pilsen, South Bohemian Region

The project builds on a similarly oriented project "Wild as an animal - marketing". It aims to expand and improve the tourism infrastructure offer on both sides of the border, which should strengthen their competitiveness. Each municipality covered by this project accepts local partnerships with a wild animal living in its territory (fox, deer, etc.). The project will be accompanied by the means of events, exhibitions, and programs (e.g. Deer Week – protection of species, deer habitat, feeding animals – guiding on the one hand, cuisine and gastronomy on





the other) that simultaneously encourage tourism, but also the protection of nature and various species.

### **Expert Forum on cross-border cooperation in tourism 2010 / Prospects for International tourism and development destinations: from local competence to local offer**

Catholic University/Katholische Universität Eichstätt-Ingolstadt, Regionales Kompetenzzentrum für den Landkreis Regen, Kommunaler Zweckverband Volkshochschule/Regional Expertise Centre District Regen, Local Union of the Adult Education Centre Regen

The central theme of this professional forum was "Development of products and services." Attractive products and offers present the basis for the competitiveness of tourist destinations. Without brands and products, tourism destinations cannot function properly. In cross-border destinations, however, it is very difficult to produce them due to overlapping administrative powers and/or everyday difficulties in addressing various issues. Regarding the development of cross-border products and their overall supply a particular attention should be dedicated to the strategic development of products, since this can help to create or damage the name of a destination in the longer term. The event was suitable for all interested regional and national officials, as well as for managers in tourism, representatives of public and scientific institutions, as well as community organizations.

### **Green Buses**

Pilsen, South Bohemian Region, Lower Bavaria

The project aims to improve the system of regional public passenger transport within the Šumava National Park linked to the transport concept of the Bavarian Forest National Park. The intention is to make the concept of "Green buses" more popular and in particular to ensure their connectedness with the Bavarian system "Igelbus", "Waldbahn", and "Bayerwald-Ticket". Green buses include a set of bus lines which have been operating since 1996. This project could reduce the pressure of car traffic. A common bus schedule will be created, and the ticketing system will be harmonized on both sides of the border. Partners prepare bilingual informative material, etc. The timetables, tips for trips, walking tours and other information are provided on the Bayerwald-Ticket website ([www.bayerwald-ticket.com](http://www.bayerwald-ticket.com)).

### **Cross-border Action Association Čerchov / Aktionbündnis Schwarzkopf**

Even before formal EU enlargement in 2004, the representatives of the municipal sector sought to implement institutionalized cross-border cooperation in 2003 by establishing the cross-border Action League Čerchov. It brings together six Bavarian (especially the original district Waldmünchen) and 14 Czech municipalities, which are also members of the micro-region



Chodská League. The motto is "Čerchov - a landscape full of energy". The aim of all activities is to develop environmentally friendly tourism in the Bavarian-Czech borderland area as well as to lay the ground for a progressive region in the field of technology (aimed at environmental protection), renewable energy sources and the efficient use of wood, cultural space focused on the exploitation of natural resources, construction and history, along with the cooperation of local partners.

### **EUREGIO-Gastschuljahr / Visiting year**

Participants are the Bavarian State Chancellery / Bayerische Staatskanzlei, the Czech-German Fund for the Future / Deutsch-Tschechisches Zukunftsfond and the EUREGIO Bayerischer Wald - Böhmerwald / Šumava- Unterer Inn eV.

The project is aimed at Czech secondary school students in the border region, who wish to spend one academic year at a grammar school in Bavaria. The aim of the program is to enable Czech participants to spend a year in a Bavarian family, since this form is the best way to become familiar with the social environment of the host country. This is a very successful project; it has involved about 400 students from 12 secondary schools and 14 Czech German grammar schools, as well as numerous host families. In the school year 2014/2015, it is the 19<sup>th</sup> year of the project with a huge interest from the students' side.

### **Selected projects Czech-Bavarian border (-Austria) cooperation in the academic sector (solved at the Department of Geography University of West Bohemia in Pilsen)**

#### **Networked consumer protection Bavaria / Czech connect - Objective 3 (2008-2010)**

The aim of the project was to analyze the problems of consumer protection. Consumers should have redressed the information deficit, promote and coordinate the exchange of ideas and experiences among regional actors.

#### **Euroregion Šumava - past and present (2013-2014)**

The intention of the project was to publish a German version of the publication "Euroregion Šumava - Past and Present", which should serve as a presentation material for the Euroregion Šumava / Bayerischer Wald-Unterer Inn / Mühlviertel and the development Agency of Pilsen Region. This publication is a geographical analysis of the entire area of the Euroregion Šumava, which evaluates the natural sphere of the region, its demographic potential, economic base and infrastructure. A geographical analysis is supplemented by a subjective view of the population from the Czech, Bavarian and Austrian parts on the role of the Euroregion in cross-border cooperation. The publication involves spatial analysis of cross-border projects in the CBC program.



### History of the Czech-Bavarian border region in the years 1945-2008 (2009-2011)

The aim of the project was to show the consequences of "closed borders and the Iron Curtain" in political, cultural, spiritual, legal, economic and natural terms. The comparison of the impact of closed and open borders with specific material contributes to the convergence of people in the Czech-Bavarian borderland. The aim of the project was to deepen the practical cooperation of the participating universities.

### 6.3 Disposition fund and Small projects fund

The Euroregion Šumava through RDA manages the Disposition fund Cross-border Cooperation Operational Programme Objective 3 – Czech Republic–Bavaria. In 2012, 112 projects were approved, including 43 small investment projects. The total amount of subsidies reached ca 808 000 €; the next call offers 120 000 €. It is possible to assume that the fund will be spent until the end of the programming period; there is an option to use it for so-called spare projects. For the whole period (2007/2008-2013) approximately 2,94 million € were available for the Czech partner, and 2,4 million € for the Bavarian partner. The Fund excels at the number of processed, but mainly approved projects at the European level.

The German partner has during the entire period (2008-2014) helped to co-finance the implementation of 281 small projects, totalling 2 441 000 €. This corresponds to an average of € 8 688 per project. The highest number of projects – 51 – was supported in 2013, when the average amounted to around € 11 360.

Non-profit organisations are eligible to get funding from the Disposition fund for soft projects and even for smaller hard projects.

- The first group focuses on cultural exchanges, local democracy, human resources, planning and developmental studies, economic development, tourism, environment, marketing and communication, as well as institutional cooperation.
- The second group focuses on activities concerning touristic hiking trails, information branding of towns and municipalities, environmental issues, and the reconstruction/renovation of „small monuments“.

In the Czech-Austrian border, the Small Projects Fund is managed by the neighbouring Euroregion - South-Bohemian Silva Nortica. So far, 462 projects were supported with the approved financial contribution from the ERDF with an amount of 2 858 000 €. This was supplemented by co-financing totaling 963 000 €. As a result of the delayed start of the programme, as well as payment delays only 1 626 000 €, i.e. approx. 57% of all funds available have been used until now. Due to the length of the Czech-Austrian border and the small representation of the Euroregion Šumava on its length, it is understandable that our concerned



area has had a relatively small share. Still, there are some interesting projects that were selected and are presented here.

### Best practice projects from the Small projects fund AT-CZ 2010-2013

| Exhibition of education and craft                       |                                  |
|---|----------------------------------|
| Applicant (CZ)  | Partner (AT)                     |
| South-Bohemian Economic Association<br>České Budějovice | School of Tourism Bad Leonfelden |

The project enabled the realisation of a cross-border exhibition, education and craftsmen training with the attendance of high school students and students of craft schools (10 CZ, 2 AT). The implementation of the project enabled a transfer of experiences in the fields of technology, know-how, and educational methods of technical and craft professions. The project also contributed to the development of the language skills of students and teachers.

| Peace ride                                       |                                  |
|--|----------------------------------|
| Applicant (AT)                                   | Partner (CZ)                     |
| Österreichischer Cavallerie-Verband<br>Pregarten | Jockey Club Borová Český Krumlov |

Twenty riders from traditional societies of cavalry from Hungary, the Czech Republic, and Austria were wearing ceremonial uniforms of the emperor's and king's dragoons, lancers, and hussars. They attended the Peace ride from Gmunden to Český Krumlov via Wels, Linz, and Vyšší Brod. The ride pointed out the particular historical realities in the times of the monarchy, the two World Wars, the post-war period, and even present times. Collectively bearing remembrances stimulates and brings peace, symbolised by reading aloud a message of peace in each place where the riders stayed overnight, followed by planting a tree.

| Cycle station    |                      |
|------------------|----------------------|
| Applicant (AT)   | Partner (CZ)         |
| Village Schönegg | Village Přední Výtoň |

The cycle station in Schönegg, situated immediately at the state border, is part of a great project that supports the development of cycle tourism. It is the starting point for cycle path to Lipno dam. Another activity of the project was a stabilisation of the cycle path from Přední Výtoň to the state border. This new leisure time activity was presented on the occasion of celebrating the 20<sup>th</sup> anniversary of the partnership of the two villages.



**Power of place of pilgrimage in Horní Malše (Obere Maltsch)**

| Applicant (AT)                      | Partner (CZ)                              |
|-------------------------------------|---|
| Association Zukunftsforum Freistadt | Cultural and Informational Centre Kaplice |

Since the opening of the the state border in the surrounding area of the river Malše (in Austria called Maltsch), a substantial resurrection of cycle tourism and hiking could take place, especially thanks to the initiatives establishing this area as a „Natura 2000“– line above Malše river, the refurbishment of the gothic church in Cetviny, and renovation of the chapel and the stations of the cross. The precondition for this development was GIS and photographic documentation of sacral constructions, literature searches and translations of valuable cultural information, and making them available through trilingual information columns close to churches of pilgrimage and bilingual information leaflets.

**Photographers of Šumava**

| Applicant (AT)         | Partner (CZ)                 |
|------------------------|------------------------------|
| OÖ Kulturquartier Linz | Cistercians Abbey Vyšší Brod |

By means of photographs from vast private collections amended by exhibits from Šumava museum in Vienna and the Regional museum in Český Krumlov, nine photographers were presented who were working in Šumava. They documented in extraordinary way an environment in which citizens lived for the period of 100 years (1890–1990). The exhibition was supplemented by actual photographs and text contributions of students from Upper Mühlviertel and Southern Bohemia, which shed some light and added their own view on life in Šumava.

**Reinforcement of trilateral structure fire departments**

| Applicant (AT)           | Partner (CZ)                 |
|--------------------------|------------------------------|
| Fire department Rohrbach | Fire department Přední Výtoň |

Fire departments, the police, the Red Cross, alpine rescue service and civil defence took part in the exchange of experiences and information. Partners from Rohrbach and Přední Výtoň showed emergency vehicles of single organisations, and carried out joint training of emergency actions and a competition. The aim of this activity was to improve the communication and the coordination of the single fire departments for the case of cross-border operations and catastrophes so to make them work at their best.



| Roller-skating track in Lipno lake |                                    |
|------------------------------------|------------------------------------|
| Applicant (CZ)                     | Partner (AT)                       |
| Town Lipno nad Vltavou             | Association SternGartl Mühlviertel |

Lake Lipno has a huge potential not only during summer, but even in the winter. The frozen surface offers many opportunities for ice-skating for locals and visitors, holiday ice-skaters, and even top competitors. The track was officially measured and with its 10 922 m declared as the longest ice-skating track in the world. A regular maintenance of the track was ensured.

| South-Bohemia compass                          |                   |
|--|-------------------|
| Applicant (CZ)                                 | Partner (AT)      |
| Cultural association Metropol České Budějovice | OÖ Tourismus Linz |

There were 92 exhibitors at the fair, including Bavarians and Austrians, and the number of visitors reached 3 200. The aim of the project was to show South-Bohemia as a significant touristic destination and to popularize cross-border cooperation with Upper Austria and Bavaria as well as to organise a press trip for journalists and tourism providers. Fostering a deeper cooperation of infocentres within the region and with the neighbouring region was also an objective.

| Green bridges                                       |  |
|---|--|
| Applicant (AT)                                      | Partner (CZ)                                     |
| Association Grünes Herz Europas Haslach an der Mühl | Association Zelené srdce Evropy České Budějovice |

The Czech Ministry of Environment organised a very impressive photographic exhibition about four cross-border natural parks in the country (Šumava, Krkonoše, Podyjí, České Švýcarsko). This exhibition goes through the Czech Republic and neighbouring countries (2011 in Haslach). Additionally, some excursions took place to Czech protected areas, especially to the Šumava Park.

#### 6.4 Analysis of the cross-border cooperation programmes' contribution

A need for cross-border cooperation and its perception is reflected in the findings, which were articulated by the representatives of the Euroregion themselves in one of the former research activities. This research focused on cooperation as such, with a particular attention dedicated to the contribution of EU programmes. These findings were put on web by the Euroregion.



### **What measures were taken to improve the flow of information among all participants?**

The development of information technology has contributed to the improvement of information flows; many joint projects contributed to the process of information exchange in all areas, but especially in the areas of culture, education and tourism.

### **How significant are language barriers in joint cooperation?**

There is certain complication in establishing partnerships; partners will however find a communication path after a certain time.

### **In which areas do you see cooperation across borders mostly meaningful?**

Education, culture, tourism, infrastructure, environment, etc.

### **In what areas is cooperation not needed or helpful?**

Cooperation is needed in all areas.

### **Cultural projects are over-represented in cross-border cooperation. How important is a border region to you?**

Cultural projects predominate in our region; it is a certain inertia in which everyone is trying to keep pace with missing meeting activities interrupted by the Second World War and the period of totalitarianism in the Czech Republic.

### **Where do you get your ideas for projects in your region?**

These are requirements of the individual places of the region; it has always been emerging from cross-border cooperation. In particular, they reflect the needs of individuals, entities, associations, micro-regions, and cross-border micro-regions as well.

### **How important do you consider the dependence of the Czech nation on cross-border cooperation?**

We were certainly missing mutual understanding of culture and customs. Opening the borders meant a substantial experience for the Czech nation and cross-border cooperation has brought new knowledge on both sides.

### **What is your main source of information related to the opportunities and strategy of cross-border cooperation?**

You can take advantage of all events, seminars. However, awareness of informal knowledge for all events in the areas of cooperation prevails.

### **Can you name an important selection criterion for cross-border projects that differs from the regulations of Brussels?**

A number of criteria for cross-border projects are set up as complicated on the Czech side. They unnecessarily complicate conditions for applicant submission, as well as the processes of



implementation and sustainability. For example, the difference in the administration of Disposition Fund of Interreg IIIA on both the Czech and Bavarian sides.

### **What were the problems before the accession of the Czech Republic to the EU in relation to projects that were funded from Phare CBC and INTERREG?**

Pros: The preparation and documentation of the projects were simplified.

Cons: The pre-financing of the project, i.e. an implementer gets the co-financed money late, and in case of large financial volumes it could generate difficulties. It was possible to get advance payments in Phare CBC.

### **Can you suggest some improvements for making the process of applications through the INTERREG more effective?**

Simplification of the methods of administration related to projects, documentation as well as implementation. On the Czech side, it is necessary to simplify the Disposition Fund and to actually implement the DF as one project, not as a number of part projects.

### **What is the benefit of cross-border cooperation for joint growth in Europe?**

Coordination, share of experience, elimination of economic differences, and utilisation of potentials in particular areas.





## 7. Management (revenues/expenses)

The management of the Czech part of the Euroregion Šumava-Bayerischer Wald consists of the Chairman and two employees. The management transfers information concerning its activities through “annual reports” that are presented on the Euroregion’s website. (<http://www.euregio.cz/euregio/index.php?page=31&lang=cz&sm=1>). Apart from providing the obligatory information, they also publish a “Newsletter for members” (<http://www.euregio.cz/euregio/index.php?page=66&lang=cz&sm=1>) that informs about important events, working group meetings and calls within Disposition fund.

The financial management is an integral part of the activities of the Euroregion Šumava-Böhmerwald/Unterer Inn-Mühlviertel. A particular report is discussed and approved by the general assembly (last meeting on 27<sup>th</sup> of May 2014 in Sušice). There were lower allowances of member municipalities than presumed due to unsettled allowances even for the decrease of inhabitants. Regional allowances reached over 0,5 million CZK (South-Bohemia region pays 330 000 CZK and Pilsen region pays 200 000 CZK). There were other revenues from Objective 3 programmes for costs related to the office. Expenses for wages and levy were lower than expected. On the other hand, the AEBR fee was higher because of the exchange rate of CZK/EUR.

The project Objective 3 “Office” included material, stationary, treat. Cycle maps and event calendars were financed from the Tourism Fund. The reserve (100 000 CZK) was used for celebrating the 20<sup>th</sup> anniversary of the Euroregion Šumava-Bayerischer Wald. The difference between costs and revenues is caused due to exchange rate losses between the Czech domestic currency (CZK) and Euro.

The report was approved by all 30 votes: none was against and no one abstained from voting. The actual situation in the financial management of the Czech part is demonstrated by Table 15, which makes it obvious that the budget is drafted in a balanced, respectively surplus manner. There is an almost similar share of revenues from municipalities as representatives of local level and regions as representatives of regional level. Furthermore, a fundamental position among expenses are the staff-costs – approximately 45% of all costs. The second significant amount is the outsourcing of the Regional Developmental Agency Šumava services. Other items of different character are used for office operation of the Euroregion Šumava-Böhmerwald/Unterer Inn-Mühlviertel in Běšiny.



Table 14: Budget proposal of the Czech part of Euroregion for year 2014

| Item  | amount CZK       |
|---|------------------|
| <b>OPENING SITUATION</b>  |                  |
| safe  | 2 142            |
| bank account Komerční banka   | 444 711          |
| bank account EUR DF CZ-D  | 152 980          |
| <b>total amount</b>   | <b>599 833</b>   |
| <b>REVENUES</b>   |                  |
| town and villages member fees for year 2014                             | 510 000          |
| associated organisation member fees for year 2014                       | 15 000           |
| regional authorities member fees  | 530 000          |
| other incomes (project „Office Objective 3“)                            | 700 000          |
| bank interest rate  | 0                |
| <b>total amount</b>   | <b>1 755 000</b> |
| <b>EXPENCES</b>   |                  |
| wages and levy (social and health insurance)                            | 800 000          |
| invoice RDA Šumava for year 2014  | 300 000          |
| travelling  | 5 000            |
| telephone, internet (domain)  | 25 000           |
| material, stationery  | 30 000           |
| postage   | 5 000            |
| treat   | 20 000           |
| repairing, services, others   | 20 000           |
| fees KB   | 10 000           |
| fee AEBR 2014   | 36 990           |
| <b>total amount</b>   | <b>1 251 990</b> |
| reserve, shares of projects, costs DF, 25 year after opening of borders | 503 010          |
| <b>IN TOTAL</b>   | <b>1 755 000</b> |
| <b>GRANT DF CZ-D</b>  |                  |
| administration of project DF CZ-D revenues                              | 9 000 000        |
| administration of project DF CZ-D expenses                              | -9 000 000       |
| <b>difference</b>   | <b>0</b>         |

Source: internal material of the Euroregion Šumava-Böhmerwald/Unterer Inn-Mühlviertel

The official languages of the Euroregion Šumava-Böhmerwald/Unterer Inn-Mühlviertel are German and Czech. The (joint) working language is German, but there is a visible trend to employ staff-members with the knowledge of both languages also in Bavaria and Austria (roughly one quarter of the employees representing Austrian and Bavarian partners are Czech native speakers; this is also true for the office of the European Region Danube – Vltava).



## 8. SWOT analysis

### Strengths

- unique geographical position
- well situated territory for leisure activities, with vast capacity and ability to receive groups of visitors
- healthy mountain climate
- high potential for tourism activities
- abundant territorial history in conjunction with tourism activities
- valuable historic buildings
- well preserved nature, large scale of protected areas (National parks)
- possibilities of environmental education in context with connection of naturally valuable territory and economic activities
- good reputation of the brand „Šumava“ or Böhmerwald
- traditional destination for tourists from abroad (NL, D)
- very good network of tourist paths for hiking and cycling
- routes for modern sport activities (e.g. in-line)
- good qualification for hippotourism
- the area is convenient even for seniors and families with children
- development of tourism supporting employment of citizens
- existence of quality regional information centres
- good availability of the area
- wood wealth, tradition of forestry
- tradition of agriculture

### Weaknesses

- inadequately developed infrastructure for alternative forms of spending leisure time on the Czech side
- depopulated areas with limited potential for further development
- high age index of citizens
- poor attendance in the off-season
- complicated links to higher level centres (regional centres), mainly on the Czech side
- inadequate quality of access roads
- unsatisfactory transport links to main roads of some parts of Šumava with inadequate links to Bavaria without north-south link
- unfavourable division of foot, cycle and motor traffic in some areas
- inconsistent and uncoordinated promotion of the region
- lack of visitor evidence system
- limited possibilities of tourism development in the protected areas



- inadequate quality of infrastructural services for tourists (financial services, cover of GSM service, internet etc.) in specific areas
- inadequate infrastructure of tourism services (water supplies, sewerage system)
- limits of nature protection that constrain investment activities
- lack of parking places during season
- inadequate marketing, coordination of public and private activities
- limited further development due to nature protection
- imbalanced structure and capacity of tourism spots
- excessive uniformity of restaurant offers, little selection of local specialities
- only few common cross-border projects
- insufficient utilisation of a low-season time
- aggravated quality of roads and accessibility of higher-level places
- inadequate public utilities in peripheral regions

### Opportunities

- integrated trilateral presentation of the whole euroregion as a marketing product and its particular areas
- more co-ordinated use of potential cross-border complementarities
- improving cooperation of the public and private sectors in the region within and beyond national borders
- new generation of INTERREG programmes for 2014 – 2020 period (cross-border cooperation programmes)
- reduction of seasonal influence on tourism and rising number of tourists as a result of intensified cooperation
- time extension of the visitors' stays in all three parts of the territory
- coordination of activities for tourism promotion between all three subjects creating the euroregion
- synergies obtained thanks to the cooperation with European region Danube – Vltava/Moldau
- greater cross-border cooperation in attracting foreign tourists, mainly from China and Russia
- improving the quality of roads mainly on the Czech side
- improving tourist roads and paths density, cyclo paths, hippo-roads, natural trails and their extension and connection across the borders
- creating favourable conditions for the cross-border cooperation of economic and civic society actors from all three states co-creating the cooperation territory, possible introduction of industrial zone/s of (SMEs)



## Threats

- emigration of young and well educated people to the metropolitan centres (Vienna, Nuremberg, Munich, Prague)
- lack of a joint strategy
- limited possibilities to use the INTERREG programmes for trilateral projects to solve the problems which can only be solved trilaterally
- failure in exploiting EU funds effectively
- limited willingness of various levels of public administration to create functional multi-level governance mechanisms
- unemployment on the periphery of the region
- population decrease in some parts of the euroregion
- stagnation of the quality of tourism infrastructure (ratio price/quality)
- competition of regions creating the euroregion with similar or alternative possibilities for spending a leisure time
- unwillingness to find a compromise or to cooperate with other regional actors inside and outside the national contexts
- different priorities of all parts creating the euroregion
- non-co-ordination in the approaches of environmental protection
- limits of the economic activity of citizens as an obstacle for future development
- another limit for the development of tourism due to environmental protection
- unwillingness of regions to invest into the transport infrastructure and their cross-border connections



## 9. Future plans and cooperation aims

According to the research mentioned in Chapter 2, the perspectives of the Euroregions' activities generally lie in serving municipalities and associations. Another significant workphase is taking part with the preparations of the programming period 2014-2020. The Euroregion Šumava-Böhmerwald/Unterer Inn-Mühlviertel would hitherto remain the administrator of the Disposition Fund in this period.

The development program of the Euroregion Šumava-Böhmerwald/Unterer Inn-Mühlviertel for 2014-2020 is currently being processed. The main goals of the Euroregion in the following period include the support of cross-border cooperation and regional anchoring, mutual meetings, the removal of prejudices and learning to understand each other. The key task of the Euroregion is to initiate, realize and support border-crossing processes of regional development and activities. In the following period, the Euroregion will continue fulfilling the vision of developing a common space in terms of economy, work, culture and living standards, strengthening the competitiveness of rural areas in interregional competition as well as encouraging the overtaking of obstacles in the inhabitants' minds through looking for solutions.

The most important tasks of the Šumava-Bayerischer Wald/Unterer Inn-Mühlviertel Euroregion in the following period are according to the information available on their website and confirmed by the phone interviews with some stakeholders:

- border coordination, planning and developing in the political, economical and cultural fields that are of a common interest,
- representing regional interests and topics,
- focal point for border projects between Bavaria, Austria and the Czech Republic,
- initiating sustainable innovative projects in the field of regional attractiveness and competitiveness and increasing the quality of life in the region,
- supporting regional projects in planning, coordinating and realizing important border initiatives,
- counselling regarding receiving national and European grants (on the level of the EU, states, lands or regions),
- representation of the region on European level in AEBR,
- providing information to the inhabitants concerning relevant EU topics,
- active interaction in building European Region Danube-Vltava/Donau-Moldau.

Thus the Euroregion Šumava-Böhmerwald/Unterer Inn-Mühlviertel is the central platform for cross-border cooperation and regional development in the field of cooperation of companies, transport and mobility, labour market, social matters, agriculture, ecology and environment, tourism, education, sport and culture, technology transfer as well as using energy in a European border region, the border triangle of Lower Bavaria, Pilsen/Plzeň Region, South Bohemia, and Upper Austria.



## 9.1 The European Region Danube/Donau-Vltava/Moldau

The cooperation on the Czech-Bavarian-Austrian triangle has until recently been the domain of municipalities, which were supported by districts and regions, while the most active role and competences have remained within municipalities. This approach has been changed quite recently, when the regions (at NUTS 3 level) decided to engage in cooperation more actively and establish a joint body to create a cooperation area covering the territory of all seven founding regions, which are the following:

- Upper Austria;
- Lower Austria (regions of Mostviertel and Waldviertel) ;
- Lower Bavaria with Altötting;
- Upper Palatinate;
- Pilsen Region;
- South Bohemian Region;
- Vysočina Region;

The European Region Danube-Vltava is a trilateral union established on a political level in the form of a working community. Its founders provided the following motivation (source: <http://www.evropskyregion.cz/cs/european-region-danube-vltava-erdv.html>): *“Since the Iron Curtain fall the border regions have become closer and work on joint projects, such as the economy, tourism, culture, social sphere and education. For participating municipalities and regions it has been beneficial to cooperate with their neighbours, even though their home is in another country. Over the years, networks transcending borders and increasing the attractiveness of the regions have been established. Many projects which have recently been jointly implemented prove there is a strong interest for cooperation with neighbouring regions. Plans and projects can be processed even more effectively and in closer concordance within the European region.”*

The establishment of this region was financially supported from the OP CBC Austria-Czech Republic, which co-funded the project called Europeregion Donau-Vltava with the sum of almost € 300 000 in 2009. The main purpose of this project was to develop the strategic documents and prepare networks which would conduct the work of the establishment of the region itself. There is a major similarity between this cooperation entity and the European Grouping of Territorial Cooperation TRITIA on the Czech-Polish-Slovak borders, which adapted exactly the same approach and used the finances from Objective 3 programmes to prepare their own cooperation strategies.

The founders of the European Region Danube-Vltava present it as one common region with 6 million inhabitants on an area of 60 000 km<sup>2</sup> composed from territories of 3 countries, where 2 official languages are spoken. The goal of the region is the development of cooperation for the welfare of the population, strengthening the region and its capacity to compete with other agglomerations, and to implement the European idea. According to the interviews, the region



has been constructed as a kind of counter-balance to the principal metropolitan agglomerations, presented here mainly by the cities of Vienna, Munich and Nuremberg, with the possible inclusion of Prague.

The establishment of the European Region Danube-Vltava started the operational activities of this community, which is devoted to cooperation and further development of the partner regions in the following prospective areas:

- Research and innovation;
- Cooperation of universities;
- Cooperation of enterprises and the creation of clusters;
- Qualified workforce and labour market;
- Tourism oriented towards nature, health, cities and culture;
- Renewable energy and energy efficiency;
- Mobility, accessibility and transport.

A so-called knowledge platform has been established for each prospective area, which is represented by experts of all seven regions. Their task is to devise and plan specific measures within the European Region Danube-Vltava strategy and support projects from a professional viewpoint through their knowledge and contacts. Each European Region Danube-Vltava member entity is responsible for the functioning and work of a knowledge platform.

## 9.2 Goals

The partner regions want to shape the European region Danube-Vltava through their trilateral cooperation as:

- a region where people have a future,
- an attractive living and economic space between metropolitan regions/agglomerations,
- a strong partner for European politics,
- a learning and dynamic region.
- All partners also want to:
  - jointly develop and build the future of European Region Danube-Vltava,
  - jointly preserve and strengthen intact living space, natural and cultural areas,
  - develop research and educational opportunities in cooperation between universities and schools,
  - create interesting jobs in cooperation between enterprises,
  - support competitive enterprises in cooperation between politics and administration.





The cooperating partners plan to have the cooperation as a platform of cooperating entities and do not foresee any institutionalisation in a legal form, as for example the European Grouping of Territorial Cooperation chosen by the EGTC TRITIA on the Czech-Polish-Slovak border region. This might also be caused by a strong role of Austrian partners in the cooperation entity, as Austria is one of the EU countries with the coldest attitudes towards creating EGTCs (there was only one EGTC with Austrian members, Europaregion Tirol, Südtirol und Trentino, as of the end of 2014).

### 9.3 Relations between the Euroregion Šumava - Bayerischer Wald/Unterer Inn–Mühlviertel and the European Region Danube - Vltava

The official rhetoric of representatives of both cooperation groupings insist mutual cooperation, which is reflected on the web presentation of both groupings. Nevertheless, the reality is somewhat more colourful: the Bavarian partner of the European Region, the Lower Bavaria Region, has already started to act as an institutional partner for both cooperation groupings and it acknowledges the added value of the engagement in both initiatives with clear complementary effects and benefits. According to its representatives, the Region plans to remain the founding member of both initiatives, nevertheless during the interviews we were under an impression that the new initiative is seen as the more strategic one. A similar approach could also be observed on the Austrian side of the Euroregion, where the potential of cross-border cooperation at regional level is also clearly seen as an asset.

The European Region Danube – Vltava received the most hesitant welcome from the Czech side of the Euroregion Šumava - Bayerischer Wald/Unterer Inn – Mühlviertel, as it was evident from phone interviews. The Czech partners of the Euroregion are mostly municipalities. Their engagement in the euroregional cooperation is motivated mostly by local impulses and cooperation at regional level seems to be too abstract and sometimes rather intangible. The role and involvement of both regions – Southern Bohemia and Pilsen Region – in the CBC is less direct. Both regions were constituted only in 2000 and they thus joined the euroregional cooperation when it was established and the cards were distributed. Therefore the initiative leading towards creating the European Region Danube–Vltava was found attractive mainly by regions on the Czech side of the euroregion.

These different approaches from Austrian, Bavarian and Czech members clearly show a different approach to multi-level governance of the territory. Multi-level governance as a system in which *“supranational, national, regional and local governments are enmeshed in territorially overarching policy networks”* (Hooghe, Marks 2003). We could observe that the Iron Curtain left its traces on the behaviour of CBC actors in both parts of the Euroregion (Austro-Bavarian on the one hand and Czech on the other): the preparedness to apply multi-level governance mechanisms is still significantly lower on the Czech side, where the cooperation environment is not mature enough yet.



The expected scenario of the further development of the relations between the Euroregion Šumava-Bayerischer Wald/Unterer Inn–Mühlviertel and the European Region Danube-Vltava is based on the qualitative aspect of the research: the Euroregion Šumava-Bayerischer Wald/Unterer Inn–Mühlviertel will mainly conduct the administration of the microprojects' schemes under three bilateral operational cross-border cooperation programmes and thus support further people-to-people projects. The Austrian and Bavarian partners of the Euroregion Šumava–Bayerischer Wald/Unterer Inn–Mühlviertel will also try to search for synergies between both cooperation units, whereas the Czech partners will prefer status quo.



## 10. The position of the Euroregion Šumava-Bayerischer Wald/Unterer Inn-Mühlviertel among other Czech euroregions

The position of the Czech part of the euroregion is demonstrated via chosen statistical and socioeconomic data. Out of 37 pointers featured in publications (overview, tables) by Czech Statistical Office, we have chosen 6 examples, which we supplemented with information from other sources or recalculated statistics. We have also (both visual presentation and description of the situation) used graphs and charts comparing all 13 Czech euroregions.

Table 15: Position of Šumava Euroregion among other Czech euroregions

| Euroregion                                  | Districts | Municipalities | Area (sq km) | Inhabitants (thsd.) | Population density (inh./sq km) | Economically active (thsd.) | EA/inhab. (%) | Unemployment rate- reachable (%) | Accomm. beds (thsd.) |
|---|-----------|----------------|--------------|---------------------|---------------------------------|-----------------------------|---------------|----------------------------------|----------------------|
| Nisa-Nysa-Neisse                            | 6         | 145            | 2 703        | 443                 | 164                             | 233                         | 52,6          | 8,82                             | 36,5                 |
| Elbe/Labe                                   | 4         | 101            | 1 646        | 385                 | 234                             | 200                         | 51,9          | 13,59                            | 9,7                  |
| Ore Mountains                               | 5         | 73             | 1 523        | 297                 | 195                             | 155                         | 52,2          | 18,02                            | 5,5                  |
| Egensis                                     | 5         | 72             | 2 150        | 266                 | 124                             | 144                         | 54,1          | 10,14                            | 27,2                 |
| <b>Euroregion Šumava - Bayerischer Wald</b> | <b>4</b>  | <b>92</b>      | <b>3 317</b> | <b>160</b>          | <b>48</b>                       | <b>84</b>                   | <b>52,5</b>   | <b>8,25</b>                      | <b>24,4</b>          |
| Glacensis                                   | 9         | 93             | 2 069        | 517                 | 250                             | 270                         | 52,2          | 7,56                             | 26,8                 |
| Praděd                                      | 2         | 71             | 1 799        | 128                 | 71                              | 66                          | 51,6          | 15,63                            | 11,7                 |
| Silesia                                     | 3         | 61             | 1 151        | 227                 | 197                             | 116                         | 51,1          | 11,88                            | 3,5                  |
| Těšín/Cieszyn Silesia                       | 2         | 41             | 763          | 352                 | 461                             | 173                         | 49,1          | 17,3                             | 4,3                  |
| Beskydy Mountains                           | 3         | 63             | 972          | 165                 | 170                             | 80                          | 48,5          | 12,74                            | 6,8                  |
| White Carpatians                            | 5         | 176            | 2 640        | 410                 | 155                             | 209                         | 51,0          | 9,12                             | 16,6                 |
| Pomoraví - Weinvtl.                         | 7         | 74             | 1 727        | 688                 | 398                             | 349                         | 50,7          | 10,25                            | 19,7                 |
| Silva Nortica                               | 4         | 40             | 1 630        | 262                 | 161                             | 137                         | 52,3          | 6,11                             | 14,5                 |

Source: RiSy.cz

Note: maximum / minimum

The table explicitly shows the indicators in every domain, hence the maximum and minimum numbers can be easily identified. Based on these indicators, the Euroregions can be statistically compared. The Euroregion Šumava-Bayerischer Wald is by far the largest Czech euroregion, being shared by two regions and four districts. In other domains, like the representation of districts and municipalities, the region shows average results. The highest numbers are reached by the Euroregion Pomoraví - Weinviertel (Czech Republic, Austria, and Slovakia), while the lowest/minimum indicators are reached by the Euroregion Praděd with Cieszyn Silesia (Czech



Republic, Poland). The Czech-Slovak euroregion of White Carpathians comprises the most municipalities, while the fewest municipalities can be found in the Cieszyn Silesia Euroregion.

As for the population, the Euroregion Šumava-Bayerischer Wald/Unterer Inn–Mühlviertel is on the penultimate (i.e. 12<sup>th</sup>) position among Czech euroregions. This low number of population coupled with a large area leads to an extraordinarily low population density. The whole region (with Bavarian and Austrian parts) is said to be one of the least densely populated areas in Central Europe. The population density is only slightly higher than 10% of the most densely populated Czech euroregion, Těšín/Cieszyn Silesia. This also influences the position in economically active population (11<sup>th</sup> position). Euroregion Šumava - Bayerischer Wald/Unterer Inn – Mühlviertel shows a relatively high economic activity (3<sup>rd</sup> position), while the lead goes to the neighbouring Egrensis Euroregion. Favourable numbers are recorded when comparing unemployment rate too. Finally the last of the indicators presented – number of beds in public accommodation places – confirms a significant position in terms of tourism (4<sup>th</sup> place, 12% of all the Czech euroregions).

Using the graphical supplementary material, the Euroregion Šumava-Bayerischer Wald/Unterer Inn–Mühlviertel can be described and characterized by:

- a negative trend of natural population increase (together with all euroregions), but a positive migration rate (together with the euroregions of Neisse, Elbe/Labe, Ore Mountains, and Beskydy Mountains);
- a migration loss in towns (as well as in all euroregions), but a relatively significant migration win (cca 7 ‰ in 2001-2005, together with all the euroregions with the exception of Praděd);
- a negative rate in terms of internal migration, although less than in the remaining euroregions; on the other hand, there is a win in international migration (e.g. appr. 5 ‰ in 2005). Migration turnover (the sum of immigrants and emigrants) reaches one of the highest numbers;
- in terms of stability, represented by the division of natives (born in the place of current residence) the Euroregion Šumava - Bayerischer Wald/Unterer Inn – Mühlviertel took the 10<sup>th</sup> position with about 45%. The most stable population can be found in the euroregions of Pomoraví - Weinviertel, White Carpathians and Silesia, but even lower stability is typical of the regions of Praděd, Ore Mountains and Egrensis;
- the Euroregion Šumava - Bayerischer Wald/Unterer Inn – Mühlviertel shows a lower education rate than the Czech Republic as a whole;
- relatively high business activity is typical (4<sup>th</sup> place among 13 euroregions);
- out of all the regions the most commuters to work in the Euroregion Šumava - Bayerischer Wald/Unterer Inn – Mühlviertel: in 2001 ca. 7% of all the commuters, which is about twice as high as in the euroregions to follow (Pomoraví - Weinviertel, Silva



Nortica, Egrensis). Germany is the country that takes the undoubtedly dominant position (80 %) as the foreign country where the commuters go;

- when analyzing unemployment rate on municipal levels, there are significant differences among the euroregions (0–38 %);
- the Euroregion Šumava-Bayerischer Wald/Unterer Inn–Mühlviertel has the most border crossing points of all the Czech euroregions, or even supplemented with the crossing points less far away than 10 km from the border of the region (road crossings prevail);
- the most people crossed (as of 2005, when the situation was last statistically observed) the border with Germany. Between 1998 and 2005 the number fluctuated between 110 and 120 million in the sum of entries and exits, with a maximum of 122.3 million persons reached in 2005. This is only slightly less than the sum for all the remaining border crosses: with Poland there was a decrease from 78.1 to 47.3 million; with Slovakia and Austria it was largely stable between 49.2 and 46.7 resp. 40.7 and 40.1 million persons;
- the Euroregion Šumava-Bayerischer Wald/Unterer Inn–Mühlviertel receives the most money in grants per capita – nearly 11 000 CZK (2003 – 2005 average), tax incomes can be considered average. This situation is reflected in total expenses of municipalities per capita – appr. 25 500 CZK means the second position behind the Pomoraví - Weinviertel Euroregion;
- there are the relatively most unoccupied flats in total in the Euroregion Šumava-Bayerischer Wald/Unterer Inn–Mühlviertel, which is also a consequence of the recreational use of these residential units (nearly 16 resp. appr. 7% out of total numbers of flats);
- the Euroregion Šumava - Bayerischer Wald/Unterer Inn – Mühlviertel is the region where the most flats were built (between 2000-2005) – considered according to the numbers of flats finished (by co-ops and municipalities) per 1 000 inhabitants. The Euroregion Šumava - Bayerischer Wald/Unterer Inn – Mühlviertel is the only region where the number is higher than 20 flats per 1 000 inhabitants, while it is about 15 in most other regions, the last being Ore Mountains (appr. 5 flats).



## 11. Summary

The Euroregion Šumava-Bayerischer Wald/Unterer Inn-Mühlviertel is an example of a cooperation entity between “old” and “new” Europe, which was created in the first half of the 1990s. The euroregion is full of imbalances: the population on the German/Bavarian and Austrian side has been stable and unchanged, whilst most of the original German speaking inhabitants were forced to leave the Czech territory in 1945. In 1945–1989 the territory was divided by the Iron Curtain; the border was a sheer physical barrier with very strict dividing functions.

The fall of the Iron Curtain brought a new geopolitical situation in Europe. Consequently, the creation of smaller cooperation entities, as it was the case also for the Euroregion Šumava-Bayerischer Wald/Unterer Inn-Mühlviertel in 1994, started to be initiated along the borders.

The cooperation included two different and for a long time hermetically closed and divided worlds, which were about to start to get in more frequent contact in this asymmetric borderland after 1989. The cooperation territory is rather large (compared to other euroregions with Czech, Austrian, and Bavarian members) and the number of inhabitants and population density is very low, due to the mountainous character of the territory.

Cross-border relations strengthening the integrity of this region after the opening of borders in the beginning of the 1990s had different characters and motivations: the principal motivation of these relations was to benefit from economic imbalances of all parts of the borders. Therefore, many Czechs have been commuting on a daily basis to the neighbouring Austrian and Bavarian regions after the opening of the borders in the 1990s. Nevertheless, due to very different income levels on all sides of the borders this flow has had one direction mostly. This remained unchanged until recently. Following EU enlargement in 2004 Germany and Austria imposed limitations on the free movement of workers from the new members states, which were in force until 2011. Yet after 2011 there was no dramatic increase in the number of Czechs working in Austria and Germany. Despite several initiatives – led by the euroregion itself, but we can also mention EURES Bavaria–Czech Republic – trying to eliminate border effects, ambitions to co-ordinate complementarities of potentially joint cross-border labour market remain only in the planning phase in the strategic documents of the European Region Danube – Vltava/Moldau (Plan of Strategies and Measures for European Region). This is worth mentioning as there is in the Euroregion Šumava-Bayerischer Wald/Unterer Inn-Mühlviertel – at least on its Czech side – a higher number of cross-border commuters compared to other euroregions with Czech participation. This reflects also some deeply rooted anti-Czech sentiments or stereotypes in Bavaria and Austria, but this deserves a further research.

Cooperation was driven and managed by unions of municipalities and the cooperation goals thus reflect the characteristic needs of municipalities. The Austrian and Bavarian members tend to prefer greater integration of this euroregional cooperation with the newly developed



European Region Danube–Moldau/Vltava, whereas the Czech members – at least those representing municipalities – have shown a rather hesitant approach towards this new cooperation entity, which is led and controlled by regions (NUTS 3 level). This has to be attributed to the probably lower level of institutional thickness and preparedness to apply multilevel governance mechanisms on the Czech side.

EU funds, represented here by INTERREG programmes, present the most important source to finance the cross-border cooperation in the Euroregion Šumava-Bayerischer Wald/Unterer Inn–Mühlviertel; accordingly it is also the most important subject of cooperation, as the Euroregion, respectively its three national secretariats, are responsible for the distribution of INTERREG smaller funds under the framework of Small Projects/Disposition Funds. This joint task requires a close cooperation and has helped to create functional cross-border networks, mainly between municipal actors. This has been reflected mainly on the Czech-Bavarian perimeter as a vast majority of all (so called big projects exceeding 30 000 Euros) projects supported from the OP Bavaria–Czech Republic in the 2007–2013 period came from the Euroregion Šumava-Bayerischer Wald/Unterer Inn–Mühlviertel territory. The Austrian-Czech programme is a different story, as the Euroregion Šumava-Bayerischer Wald/Unterer Inn–Mühlviertel is at the very (short) end of the entire border. Most of the projects supported from INTERREG programmes in the Euroregion address the fields of tourism and regional development (in general). These topics have absolutely predominated over other fields, such as cooperation in the softer fields helping to create some sort of joint identity, through education, culture, or sports. One of the possible interpretations is the physical mountainous character of the Euroregion Šumava-Bayerischer Wald/Unterer Inn–Mühlviertel; others would probably be deeper and related with the complicated history and certain antagonisms on both sides of the former Iron Curtain: but this should be the subject of another research project.

At this moment we can conclude that the basic integrated element of the Euroregion is a spatial integrity, which was artificially divided along the lines of national borders. We can divide integrating aspects into managed and unmanaged ones; unmanaged elements can further be classified as physical-geographical/natural aspects and social aspects. These natural aspects create a basic identity for the Euroregion (mountains), even though this integrity has been partially broken by different environmental initiatives. As an example we can mention different approaches towards the protection of forests. Social aspects, having their roots in the „place factor” and regional hierarchisation, strengthened this identity by creating a joint cross-border transport infrastructure. The euroregional structures have played the role of co-ordinated integrating aspects creating cross-border structures, which significantly assisted the intensification of cross-border cooperation. Nevertheless, there is still a lot to be done.



## 12. Bibliography

Authority of Upper-Austrian State Government (2011): Networks and structures analysis of the Euroregion Donau-Moldau. Analysis of potential. Version 2. 1. 2011.. Linz, p. 180.

Böhm, H. (2014): Evaluation of Selected Cross-Border Regions and Their Governance. In: The Journal of Cross-border Studies in Ireland. Centre of Cross-border Studies, Armagh, p. 36-50.

Boesler, Klaus-Achim (1997): Neue Ansätze der Politischen Geographie und Geopolitik. Erdkunde: Archiv für wissenschaftliche Geographie. 51(4): 309-317.

Dokoupil, J., Matušková, A., Preis, J., Rousová, M., Kaňka, L. (2012): Euroregion Šumava. Plzeň, Čeněk, 185 p.

Dokoupil, J. (1999): Evropské příhraniční prostory – euroregiony. In: Jeřábek, M. (Ed.) (1999): Geografická analýza pohraničí ČR. Publisher Czech Academy of Sciences. Prague, 180 p.

Eures Bavaria – Czech Republic: [www.eures-by-cz.eu](http://www.eures-by-cz.eu)

European Region Danube – Moldau/Vltava European Region Danube – Vltava/Moldau (Plan of Strategies and Measures for European Region): [www.evropskyregion.cz](http://www.evropskyregion.cz)

Euroregion Šumava – Bayerischer Wald: 20 Jahre Euregio / 20 let Euroregionu, 2013, available at [www.euregio.cz](http://www.euregio.cz)

<http://www.euregio.cz/euregio/index.php?page=31&lang=cz&sm=1>

<http://www.euregio.cz/euregio/index.php?page=66&lang=cz&sm=1>

Hámp, M. (2000): Pohraniční regiony České republiky: současné tendence rozvojové diferenciace. Geografie–Sborník ČGS, roč. 105, č. 3, p. 241–254.

Hooghe, L., Marks, G. (2003): Unraveling the Central State, but How? Types of Multi-Level Governance. The American Political Science Review, 97/2, p. 233-243.

<http://www.euregio.cz/euregio/index.php>

Jeřábek, M. (Ed.) (1999): Geografická analýza pohraničí ČR. Publisher AV. Prague, 180 p.

Ministry of Regional Development of the Czech Republic – [www.strukturalni-fondy.cz](http://www.strukturalni-fondy.cz)

Operational Programme for Cross-border Cooperation Austria–Czech Republic 2007–2013, available at [www.strukturalni-fondy.cz](http://www.strukturalni-fondy.cz) or [www.t-cz.eu](http://www.t-cz.eu)





Operational Programme for Cross-border Cooperation Free State Bavaria–Czech Republic 2007–2013, available at [www.strukturalni-fondy.cz](http://www.strukturalni-fondy.cz)

Španěl, R., Čechová, L. (2012): Marketingová strategie Šumavy v oblasti cestovního ruchu. 2012. In: Marketingová strategie a propagace Šumavy. Available at [www.sumavanet.cz/mszapad/user/.../marketingova\\_strategie\\_sumavy.pdf](http://www.sumavanet.cz/mszapad/user/.../marketingova_strategie_sumavy.pdf)

Regionální informační servis - RIS [www.risy.cz](http://www.risy.cz)

Objective 3 OP Cross-Border Cooperation Free State of Bavaria - Czech Republic <http://www.strukturalni-fondy.cz/cs/Microsites/CR-Bavorsko/Cil-3-Ceska-republika-Svobodny-stat-Bavorsko-200/Projekty>

Zich, F. (2007): Přeshraničí vlivy v českém pohraničí (Přeshraniční spolupráce v pohraničí jako evropeizace zdola?). Ústí nad Labem: UJEP



## 13. Annexes

### Annex 1: Actual Czech members of the EUROREGION ŠUMAVA-BAYERISCHER WALD (as of May 2012):

#### Presidency:

Regional Union Šumava

- Miloš Pícek, RRA Šumava, o. p. s.
- Václav Vostradovský, Kvilda
- Bc. Petr Mottl, mayor, Town Sušice

Region / District towns

- Mgr. Jiří Zimola, hejtman/president, Jihočeský kraj/South-Bohemia – regional authority, deputy Ing. Václav Valhoda
- Václav Šlajs, hejtman/president, Plzeňský kraj - krajský úřad/regional authority
- Ing. Miroslav Mach, mayor, Town Domažlice
- Mgr. Rudolf Salvetr, mayor, Town Klatovy
- Ing. Martin Malý, vicemayor, Town Prachatice
- Ing. Jitka Zikmundová, MBA, vicemayor, Town Český Krumlov
- Jan Löffelmann, mayor, Town Kdyně
- Ing. Libor Picka, mayor, Town Bělá n. Radbuzou

Regions / rural areas

- Ing. František Vlček, mayor, Municipality Běšiny (předseda předsednictva)
- Jiří Jukl, mayor, Town Hartmanice
- Oldřich Petrášek, mayor, Town Netolice
- Jiří Fastner, mayor, Horní Vltavice
- Jiří Hůlka, mayor, Town Horní Planá
- Ivana Putzerová, MěÚ Kaplice
- Jiří Iral, mayor Chelčice

#### Procurement:

- Ing. František Vlček, mayor
- Bc. Jana Mixánová, project manager, director of the office
- Ing. Vendula Francová, asistent, tourism



## Members:

### District Klatovy

- Běšiny, Bezděkov, Čimice, Dešenice, Dlouhá Ves u Sušice, Hamry, Hartmanice, Hlavňovice, Horažďovice, Horská Kvilda, Hrádek u Sušice, Chudenín, Janovice nad Úhlavou, Kašperské Hory, Klatovy, Kolinec, Kovčín, Modrava, Nezdice na Šumavě, Nýrsko, Petrovice u Sušice, Prášily, Rejštejn, Srní, Strašín, Strážov, Sušice, Švihov, Týnec, Velhartice, Vrhavěč, Železná Ruda, Žihobce

### District Domažlice

- Bělá nad Radbuzou, Domažlice, Horšovský Týn, Kdyně, Klenci pod Čerchovem, Mutěním, Poběžovice

### District Prachatice

- Bohumilice, Borová Lada, Čkyně, Drslavice, Dub u Prachatic, Horní Vltavice, Husinec, Chroboly, Kratušín, Ktiš, Kubova Huť, Kvilda, Lažiště, Lčovice, Lenora, Mičovice, Netolice, Nová Pec, Nové Hutě, Prachatice, Stachy, Stožec, Strážný, Vacov, Vimperk, Vlachovo Březí, Volary, Zálezly, Zbytiny, Zdíkov, Želnavá

### District Český Krumlov

- Benešov nad Černou, Bohdalovice, Brloh, Bujanov, Černá v Pošumaví, Český Krumlov, Dolní Třebonín, Frymburk, Horní Dvořiště, Horní Planá, Chvalšiny, Kájov, Kaplice, Lipno nad Vltavou, Malonty, Omlenice, Pohorská Ves, Přední Výtoň, Přídolí, Přísečná, Rožmitál na Šumavě, Světlík, Vyšší Brod, Zlatá Koruna.

### District Strakonice

- Chelčice

### Other members:

- District Chamber of Commerce Klatovy
- District Chamber of Commerce Prachatice
- National Park Šumava Administration
- Roman-Catholic parish Žihobce



## Annex 2: Actual representation of Bavarian side

### Presidency/Vorstand:

- Landrat Sebastian Gruber, Landkreis Freyung-Grafenau, chairman
- Landrat Franz Löffler, Landkreis Cham, vice-chairman
- Landrat Franz Meyer, Landkreis Passau, vice-chairman

### Main committee/Hauptausschuss

- Landrat Sebastian Gruber, Landkreis Freyung-Grafenau, chairman
- Landrat Franz Löffler, Landkreis Cham, vice-chairman
- Landrat Franz Meyer, Landkreis Passau, vice-chairman
- Landrat Michael Adam, Landkreis Regen
- Landrat Christian Bernreiter, Landkreis Deggendorf
- Landrat Michael Fahmüller, Landkreis Rottal-Inn
- Landrat Josef Laumer, Landkreis Straubing - Bogen

### Mayors:

- Oberbürgermeister Dr. Christian Moser, Stadt Deggendorf
- Oberbürgermeister Jürgen Dupper, Stadt Passau
- Oberbürgermeister Markus Pannermayr, Stadt Straubing
- Bürgermeister Franz Krah, Stadt Pocking
- Bürgermeister Josef Lamperstorfer, Markt Wegscheid
- Bürgermeister Elmar Buchbauer, Gemeinde Julbach
- Bürgermeister Ludwig Reger, Stadt Rötz
- Bürgermeister Eduard Schmid, Gemeinde Hohenau
- Bürgermeister Erich Schmid, Stadt Plattling
- Bürgermeister Hermann Brandl, Gemeinde Arnbruck

### Other members:

- Franz Schedlbauer, Stadt Bogen
- Walter Keilbart, Hauptgeschäftsführer der IHK Passau
- Richard Brunner, Geschäftsführer der IHK Regensburg, Geschäftsstelle Cham
- Dr. Stefan Rammer, Drei-Länder-Gesellschaft
- Klaus Storm, ARGE Mittleres Labertal
- Altlandrat Ludwig Lankl
- Altlandrat Alfred Reisinger



- Altlandrat Alfons Urban
- Altlandrat Ingo Weiß
- Landrat a.D. Theo Zellner, Präsident Bayerisches Rotes Kreuz

### Secretariat / Das Team der EUREGIO-Geschäftsstelle in Freyung

- Kaspar Sammer, Geschäftsführer/director
- Dana Biskup, Bav-AU, FMP / cooperation CZ
- Ulrike Jarosch, finances, Disposition fund (DF) Bav-CZ
- Johanna Kern, FMP Bav-AU, DF Bav-CZ, administrative
- Lucie Dreher, Objective 3 project management of EUREGIO-Gastschuljahr
- Vendula Maihorn, information office EUROPE DIRECT
- Sabine Mayer, accounting
- Barbara Daferner, regional contact of Europaregion Donau-Moldau (European Region Danube-Moldau)
- Kathrin Altmann, project manager Wissensplattform Hochschulkooperationen der Europaregion Donau-Moldau (Scientific Platform of European Region Danube-Moldau)
- Kathrin Braumandl, FMP Bav-AT

### Member municipalities:

#### Landkreis Cham

- Arnschwang, Arrach, Bad Kötzing, Cham, Eschlkam, Furth i.Wald, Gleißenberg, Grafenwiesen, Lam, Lohberg, Neukirchen b.Hl.Blut, Pösing, Rettenbach, Rötzing, Stamsried, Tiefenbach (Cha), Traitsching, Treffelstein, Waffenbrunn, Waldmünchen, Weiding, Willmering.

#### Landkreis Deggendorf

- Außernzell, Bernried, Deggendorf, Grafling, Grattersdorf, Hunding, Künzing, Lalling, Metten, Moos, Niederalteich, Osterhofen, Plattling, Winzer.

#### Landkreis Freyung-Grafenau

- Freyung, Fürsteneck, Grafenau, Grainet, Haidmühle, Hinterschmiding, Hohenau, Jandelsbrunn, Mauth, Neureichenau, Neuschönau, Perlesreut, Philippsreut, Ringelai, Röhrnbach, Sankt Oswald, Schönberg, Spiegelau, Waldkirchen.

#### Landkreis Passau

- Aidenbach, Aldersbach, Bad Füssing, Breitenberg, Eging a.See, Fürstenstein, Fürstenzell, Haarbach, Hauzenberg, Kirchham, Kößlarn, Malching, Neuburg a.Inn, Neuhaus a.Inn,



Neukirchen vorm Wald, Pocking, Rotthalmünster, Ruderting, Ruhstorf a.d.Rott, Sonnen, Thyrnau, Tiefenbach (Pa), Tittling, Untergriesbach, Vilshofen, Wegscheid.

Landkreis Regen

- Arnbruck, Bayerisch Eisenstein, Bischofsmais, Bodenmais, Böbrach, Drachselsried, Frauenau, Kirchberg, Kirchdorf i.Wald, Kollnburg, Langdorf, Lindberg, Regen, Rinchnach, Teisnach, Viechtach, Zwiesel.

Landkreis Rottal-Inn

- Arnstorf, Bad Birnbach, Bayerbach, Eggenfelden, Eggldham, Ering, Johanniskirchen, Julbach, Mitterskirchen, Pfarrkirchen, Roßbach, Stubenberg.

Kreisfreie Stadt Passau

Kreisfreie Stadt Straubing

Landkreis Straubing-Bogen

- Bogen, Geiselhöring.

#### Next members – organisations / EUREGIO-Mitglieder:

- Adalbert Stifter Verein e.V.
- ArGe Naherholung Mittleres Labertal
- ARGE Unterer Bayerischer Wald
- Bild-Werk Frauenau
- BLSV-Kreis Cham
- Bolta Industrie- und Bauprofile GmbH
- DJH Landesverband Bayern e.V.
- Drei-Länder-Gesellschaft e.V.
- DTSG Bayern e.V.
- Bayernwerk AG
- Europa-Union Niederbayern (EU Dolní Bavorsko)
- Förderverein Ilztalbahn e.V. (
- Förderverein KulturLandschaftsMuseum Grenzerfahrung e.V. (
- Glaube und Heimat e.V.
- Historischer Verein 'In der Freyung e. V.
- IHK Passau
- IHK Regensburg Jugendbildungsstätte Waldmünchen (
- Katholische Erwachsenenbildung Freyung e.V.
- Katholische Erwachsenenbildung Regen e.V.
- Katholische Landvolkshochschule St. Gunther



- kifas GmbH
- Kultur- und Passionsspielverein Perlesreut e.V.
- Museum Moderner Kunst – Wörlen GmbH (
- Ost-West-Wirtschaftsclub
- Sparkassenverband Bayern
- Tourismusverband Ostbayern
- VHS Cham
- VHS Regen
- Zweckverband Müllverwertung Schwandorf



### Annex 3: Actual Representation of Austria

#### Procurement:

- LAbg. KommR Gabriele Lackner-Strauss, co-ordinator (Obfrau)  
Team Regionalmanagement OÖ – Geschäftsstelle Mühlviertel
- Wilhelm Patri, MAS, jco-ordinator (Geschäftsstellenleiter), regional manager for economics
- MMag. Martin Luger, MA BEd, regional manager for border area development
- MMag. Maria Hochholzer, Mar, regional manager for sustainability and environment
- Josef Fürnhammer, regional manager districts Freistadt a Perg  
DI Heide Spiesmeyer, FMP AU-Bav, AU-CZ
- Elisabeth Steinmetz,
- Helene Winkler, secretary  
Regina Grünberger, assistant

#### Presidency:

- Obfrau LAbg. KommR Gabriele Lackner-Strauss
- Christian Reisinger, Obfrau-Stellvertreter/

#### Municipalities:

- LAbg. Vzbgm. Georg Ecker, Obfrau-Stellvertreter
- Bgm./mayor Erich Punz, Obfrau-Stellvertreter/
- Bgm./mayor Johann Buchberger, member (Konferenz Perg)
- Andreas Eckerstorfer, member
- Bgm./mayor Mag. Andreas Fazeni, member (Konferenz Urfahr/Umg.)
- BH HR Dr. Paul Gruber, member (BH Urfahr/Umg.)
- NR Bgm./mayor Marianne Gusenbauer, member
- Mag. Johannes Gahleitner, member (BBK OÖ)

#### Other members:

- Werner Pürmayer, member (Tourism)
- Bundesrat/spolkový radní Mag. Michael Hammer, member Bgm./mayor Johannes Hinterreither-Kern, member (Konferenz Freistadt)
- BH HR Mag. Alois Hochedlinger, member (BH Freistadt)
- Bgm./mayor Wilfried Kellermann, member (Konferenz Rohrbach)
- BH Ing. Mag. Werner Kreisl, member (BH Perg)





- Mag. Robert Leitner MBA, member (WK OÖ)
- BH HR Dr. Wilbirg Mitterlehner, member (BH Rohrbach)
- LAbg. Alexander Nerat, member
- Bgm./mayor Dominik Reisinger, member
- Klaus Riegler, member (AK OÖ)
- LAbg Ulrike Schwarz, member

### Members:

#### District Freistadt

- Bad Zell, Freistadt, Grünbach, Gutau, Hagenberg i.M., Hirschbach i.M., Kaltenberg, Kefermarkt, Königswiesen, Lasberg, Leopoldschlag, Liebenau, Neumarkt i.M., Pierbach, Pregarten, Rainbach i.M., Sandl, St. Leonhard b.Fr, St. Oswald b.Fr., Schönau i.M., Tragwein, Unterweißenbach, Unterweikersdorf, Waldburg, Wartberg o.d.A., Weitersfelden, Windhaag b.Fr.

#### District Perg

- Allerheiligen, Arbing, Bad Kreuzen, Baumgartenberg, Dimbach, Grein, Klam, Mauthausen, Mitterkirchen, Münzbach, Naarn, Pabneukirchen, Perg, Rechberg, Ried i.d. Riedmark, St. Georgen a.W., St. Nikola a.d.D., St. Thomas/Bl., Saxen, Schwertberg, Waldhausen, Windhaag/Perg

#### District Rohrbach

- Afiesl, Ahorn, Aigen i.M., Altenfelden, Arnreit, Atzesberg, Auberg, Berg b. Rohrbach, Haslach an der Mühl, Helfenberg, Hofkirchen i. M., Hörbich, Julbach, Kirchberg o.d.D., Klafffer a. Hochficht, Kleinzell i.M., Kollerschlag, Lembach, Lichtenau, Nebelberg, Neufelden, Neustift i. M., Niederkappel, Niederwaldkirchen, Oberkappel, Oepping, Peilstein i.M., Pfarckirchen i.M., Putzleinsdorf, Rohrbach, St. Johann a.W., St. Martin i.M., St. Oswald/H., St. Stefan, St. Peter a. W., St. Ulrich i.M., St. Veit i.M., Sarleinsbach, Schlägl, Schönegg, Schwarzenberg/M., Ulrichsberg

#### District Urfahr/Umgebung

- Alberndorf, Bad Leonfelden, Eidenberg, Goldwörth, Gramastetten, Haibach i.M., Herzogsdorf, Lichtenberg, Oberneukirchen, Ottenschlag, Ottensheim, Puchenau, Reichenau, Reichenthal, St. Gotthard, Schenkenfelden, Sonnberg, Vorderweißenbach, Walding, Zwettl an der Rodl



## Annex 4: List of tables and pictures

### List of tables

|   |    |
|---|----|
| Table 1: The structure of the euroregion.....   | 20 |
| Table 2: Chairmen of the national parts of the Euroregion .....   | 23 |
| Table 3: Topical orientation of the presented activities of Euroregion Šumava-<br>Böhmerwald/Unterer Inn-Mühlviertel .....  | 24 |
| Table 4: Actors of the presented activities of Euroregion.....  | 25 |
| Table 5: Local determination of the presented activities of Euroregion.....   | 26 |
| Table 6: Priority axes of cross-border cooperation for the Czech borderlands for the<br>period of 2014-2020.....  | 29 |
| Table 7: Global data on OP CBC Bavaria – Czech Republic 2007-2013 (in €).....   | 30 |
| Table 8: Allocation according to priorities and fulfilling of the four criteria .....   | 31 |
| Table 9: ERDF Bavaria – Czech Republic.....   | 32 |
| Table 10: Differences of the composition of a grant from the programme and the share<br>of national and private sources in both countries.....  | 32 |
| Table 11: Euroregion Šumava-Bayerischer Wald/Unterer Inn–Mühlviertel success rate in<br>the monitoring committees meetings of the OP CBC Bavaria-Czech Republic in 2007-<br>2013 (in €) ..... | 33 |
| Table 12: Czech-Austrian cross-border projects in Euroregion (in €).....  | 35 |
| Table 13: Financial aspects of these projects .....   | 36 |
| Table 14: Budget proposal of the Czech part of Euroregion for year 2014 .....   | 49 |
| Table 15: Position of Šumava Euroregion among other Czech euroregions.....  | 58 |

### List of pictures:

|   |    |
|---|----|
| Figure 1: Euroregions in the Czech Republic.....  | 17 |
| Figure 2: The European Region Donau-Moldau .....  | 18 |
| Figure 3: Czech municipalities involved in the Czech part of the Euroregion.....  | 19 |
| Figure 4: Basic organigram of the Euroregion Šumava-Bayerischer Wald.....   | 21 |
| Figure 5: The ERDF support for Czech-Bavarian projects from Euroregion Šumava-<br>Böhmerwald/Unterer Inn-Mühlviertel (in €) ..... | 34 |

# **Crossing the borders**

## **Studies on cross-border cooperation within the Danube Region**

2016

ISBN 978-963-12-4756-5

Published by  
Central European Service for Cross-Border Initiatives  
H-1067 Budapest, Teréz krt. 13.



MINISTRY OF PUBLIC ADMINISTRATION  
AND JUSTICE

**The Research was supported by the  
Hungarian Ministry of  
Public Administration and Justice**