



From vision to implementation – the case of the Common Future Vision for the German-Polish Interaction Area

BorderLabs CE
Transnational kick-off conference
13 November 2024, Budapest
Martin Reents

Background and motivation

- The German-Polish border provides rich evidence for sociocultural, economic and biophysical boundaries, leading to particular challenges for integrated (cross-border) planning approaches.
- In this situation, the Spatial Development Committee of the German-Polish Intergovernmental Commission for Regional and Cross-Border Cooperation (2016) has elaborated and adopted the *Common Future Vision for the German-Polish Interaction Area – Horizon 2030*.

Vision Commune d'Avenir pour
l'espace de liaisons germano-polonais *Horizon 2030*

Common Future Vision for the
German-Polish Interaction Area *Horizon 2030*



Background and motivation

» *By 2030, the German-Polish interaction area, which has strong social, economic and environmental ties and represents a common area of sustainable growth, will have become an important driver of development in the heart of Europe and will also have an influence on other regions.*

- According to its objective, the *Common Future Vision* is a spatial planning vision, aimed at facilitating the integrated development of the area on both sides of the German-Polish border through further strengthening of socio-economic, communicational and administrative links.
- Since its adoption, manifold activities have been undertaken to communicate the *Common Future Vision* and to support its implementation.
- But what does implementation mean in case of a large-scale spatial vision in this particular border area?

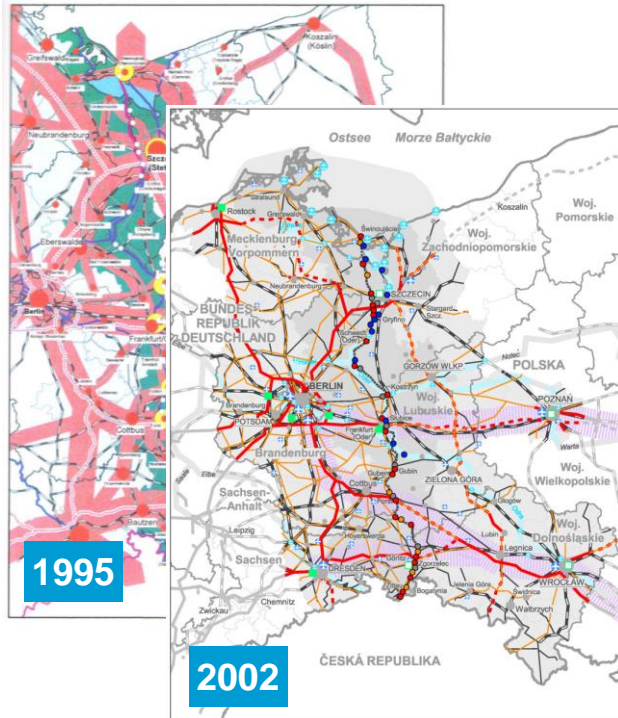
01

The position of the *Common Future Vision* in the German and Polish planning systems

THE POSITION OF THE *COMMON FUTURE VISION* IN THE GERMAN AND POLISH PLANNING SYSTEMS

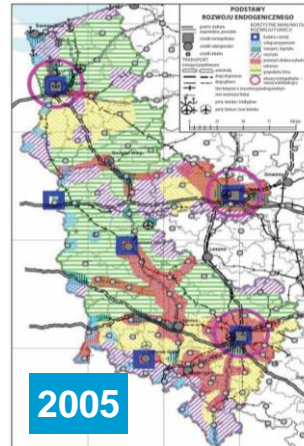
Milestones of spatial planning cooperation between Germany and Poland

Spatial planning guidelines for the area along the German-Polish border



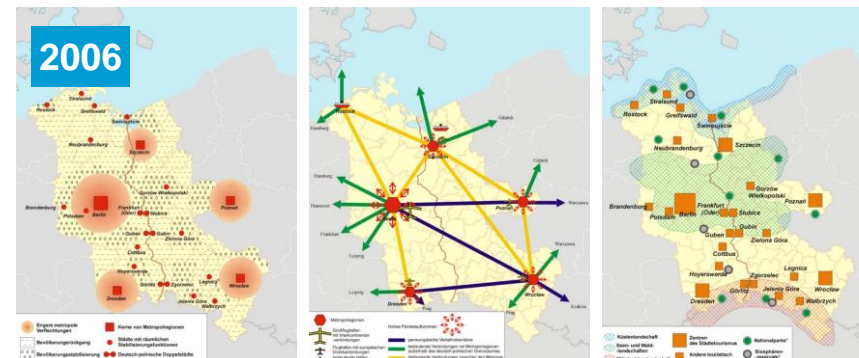
On the update of the spatial planning guidelines for the area along the German-Polish border

Land-use planning study for the area along the German-Polish border (Węclawowicz et al. 2005)



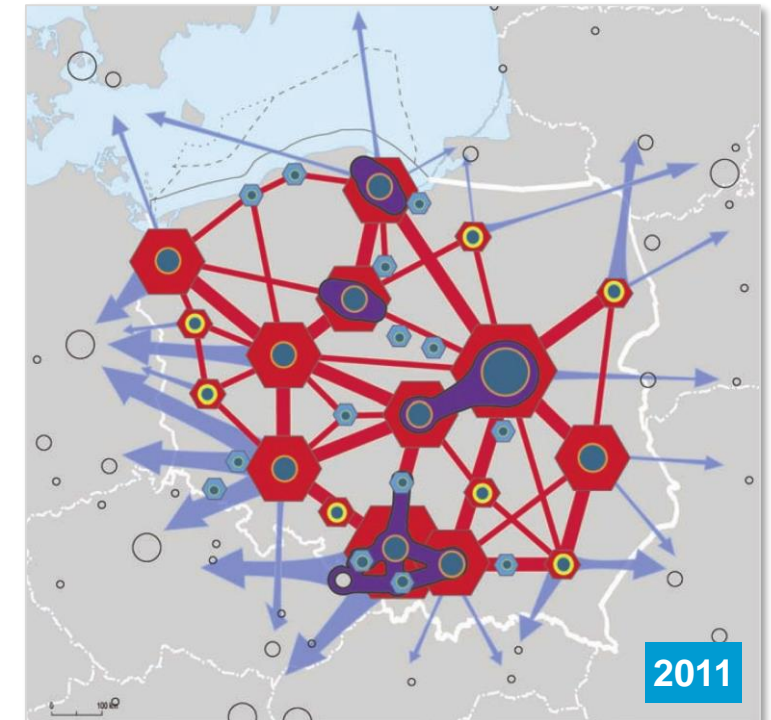
Study on the spatial integration of the Polish part of the Polish-German border area - IPPON project

The German-Polish border region in 2020 - development scenario and recommendations for action (Lammers et al. 2006)



THE POSITION OF THE *COMMON FUTURE VISION* IN THE GERMAN AND POLISH PLANNING SYSTEMS

Framework: National guidelines for spatial development



Source: KPZK 2030 - Directions of spatial policy measures to improve the competitiveness of main urban centres

THE POSITION OF THE *COMMON FUTURE VISION* IN THE GERMAN AND POLISH PLANNING SYSTEMS

Contents and function

- Thematic maps visualising the existing situation, visionary statements on desired changes and guidelines for (cross-border) integrated development
- Strategic aim: To provide motivation and inspiration for intensified cooperation in the German-Polish interaction area
- Introduction of the guiding concept of the “Interaction Area” (instead of “border area”)

DE Verflechtungsraum
PL obszar powiązań

I. EXPLOITER LES AVANTAGES DE LA STRUCTURE POLYCENTRIQUE DE L'HABITAT

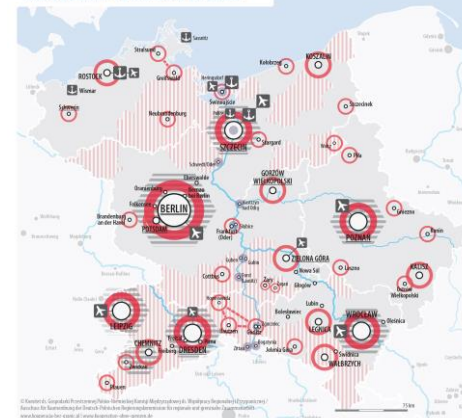
TAKING ADVANTAGE OF POLYCENTRIC SETTLEMENT PATTERNS

Vision

By 2030...

- » the potential of centres of all sizes and functions will be jointly developed, used and promoted, also outside the German-Polish interaction area.
- » the cross-border Metropolitan Region of Szczecin will have a permanent structure and will be closely linked to the Baltic Sea region as well as known throughout Europe.
- » each local and regional development strategy will include a chapter on the implications of neighbourly relations.
- » the practice of sharing social and technical infrastructure resources along the Oder-Neisse line will have become common.
- » municipalities, cities and regions in the German-Polish cross-border region will consistently implement common strategies to reduce energy consumption.

Situation initiale – Structure de l’habitat /
Initial situation – Settlement structure



I.1 Strengthening metropolises and urban centres as geographic anchors

The function of metropolises as “gateways to the world” as well as the links between major and medium-sized centres will be consolidated to make better use of complementary functions. Cooperations between cities and their surrounding areas will be further intensified so that the supply of goods and services is ensured even in areas with declining population. Locational advantages of the polycentric and diverse economic area will be jointly exploited.

I.2 Taking into account the implications of neighbourly relations for local and regional development

Neighbourly relations and their implications will be explicitly accounted for when drawing-up local and regional development strategies. Experience and potentials of border towns and twin cities as “laboratories” of cooperation and gateways of exchange between Poland and Germany will be used intensively.

I.3 Including rural areas

To improve the accessibility of rural areas, public transport services will be comprehensively integrated in the functional areas of larger centres. The functions of small and medium-sized centres as well as those of the surrounding rural areas will be consolidated and strengthened. Strategies of adapting to the impacts of demographic change will be developed and coordinated on both sides of the border.

I.4 Energy savings and efficient use of energy

To make development sustainable in the long term and meet the challenges related to climate change, energy will be saved and used more efficiently. The development of concentrated settlements helps preventing a further fragmentation of the landscape and makes using public transport (rail and bus) as well as cycling more attractive. Joint energy concepts will be developed and good practice will be shared, first and foremost within border towns and twin cities.

Policy fields addressed

Thematic field	Topic	Spatial planning	Sectoral policies with spatial impact	Further policies
I. Taking advantage of polycentric settlement patterns	Strengthening of metropolises as “gateways to the world” and links between major and medium-sized centres, intensification of urban-rural cooperation	■	■	■
	Considering neighbourly relations in local and regional development strategies	■	■	■
	Capitalisation of border towns and twin cities as “laboratories” of German-Polish cooperation	■	■	■
	Comprehensive integration of public transport services in functional areas of larger centres		■	
	Strengthening of functions of small and medium-sized centres and rural areas	■	■	■
	Cross-border coordination of strategies addressing the impacts of demographic change	■	■	■
	Improvement of energy efficiency, development of joint energy concepts and sharing of good practice		■	
II. Improving transport links	Development of concentrated settlements for landscape protection and more sustainable mobility	■		
	Rail transport – additional direct rail connections, shortening of travel times, increase of frequency, joint ticketing, coordination of infrastructure upgrading, rolling stock acquisition and transport offers, supporting role of bus transport		■	
	Road transport – improvement of existing road connections, management of heavy goods traffic		■	
	Seaports – upgrade of shipping routes and inland connections		■	
III. Investing in people	Inland shipping – strengthening the role of inland shipping, considering the principles of economy, environmental protection and flood protection		■	
	Strengthening of intercultural competences, multilingual services and cross-border exchange			■
	Learning of the language of the neighbouring country, enabling access to the modern labour market			■
	Mutual recognition of qualifications, lifelong learning			■
IV. Promoting sustainable growth	Intensification of cooperation between universities and exchange of knowledge, realization of joint scientific projects			■
	Intensification of cooperation between SMEs, encouragement of the creation of cross-border clusters			■
	Development of tourist services for neighbours, joint capitalisation of Berlin’s global touristic potential and joint marketing of offers		■	
	Capitalisation of tourism for the development of rural and peripheral areas		■	
	Reduction of energy consumption, diversification of energy supply, storage of energy from renewable sources, improvement of cross-border electricity links		■	
	Support of structural change in areas that are currently heavily dependent on raw materials	■	■	■
V. Providing the setting for a high quality of life	Joint principles for maritime spatial planning	■		
	Protection and preservation of natural and cultural assets, including national and landscape parks located directly in the border region		■	
	Historical and cultural research, visualisation of contextualised similarities and differences			■
	Coordination and implementation of objectives and concepts supporting the functioning of ecological corridors		■	
	Improvement and maintenance of environmental standards (quality of air, water and soil; protection against noise and electromagnetic radiation)			■
	Cooperation on environmental risk control and environmental awareness			■
	Coordination of the protection and management of natural resources		■	
	Reduction of flooding risks through close coordination of measures aimed at risk prevention and flood control	■	■	
	Improvement and intensification of the cooperation of security services, emergency services, fire brigades and crisis management services			■
Coordination of strategies for coastal management	■	■		

Source: own elaboration

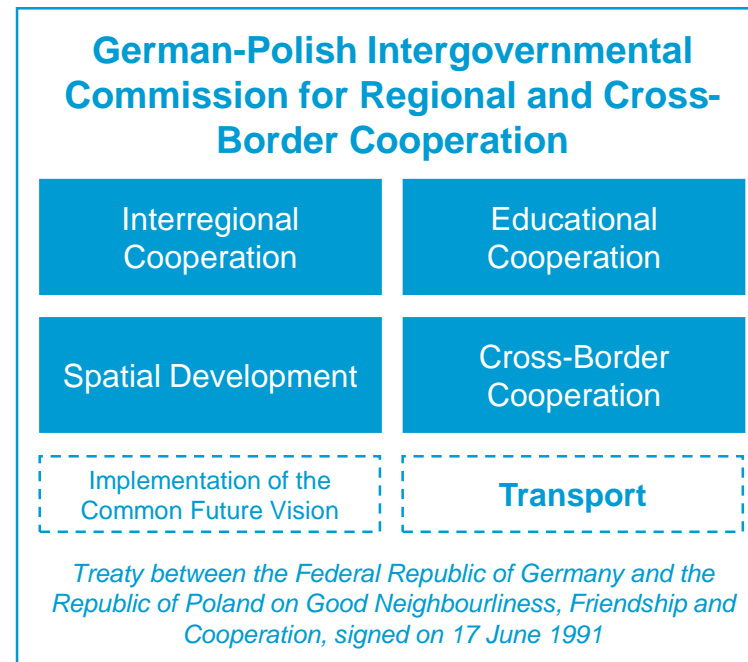
02

Complementary approaches and initiatives for integrated (cross-border) development

COMPLEMENTARY APPROACHES AND INITIATIVES FOR INTEGRATED (CROSS-BORDER) DEVELOPMENT

National level: Formal and informal cooperation

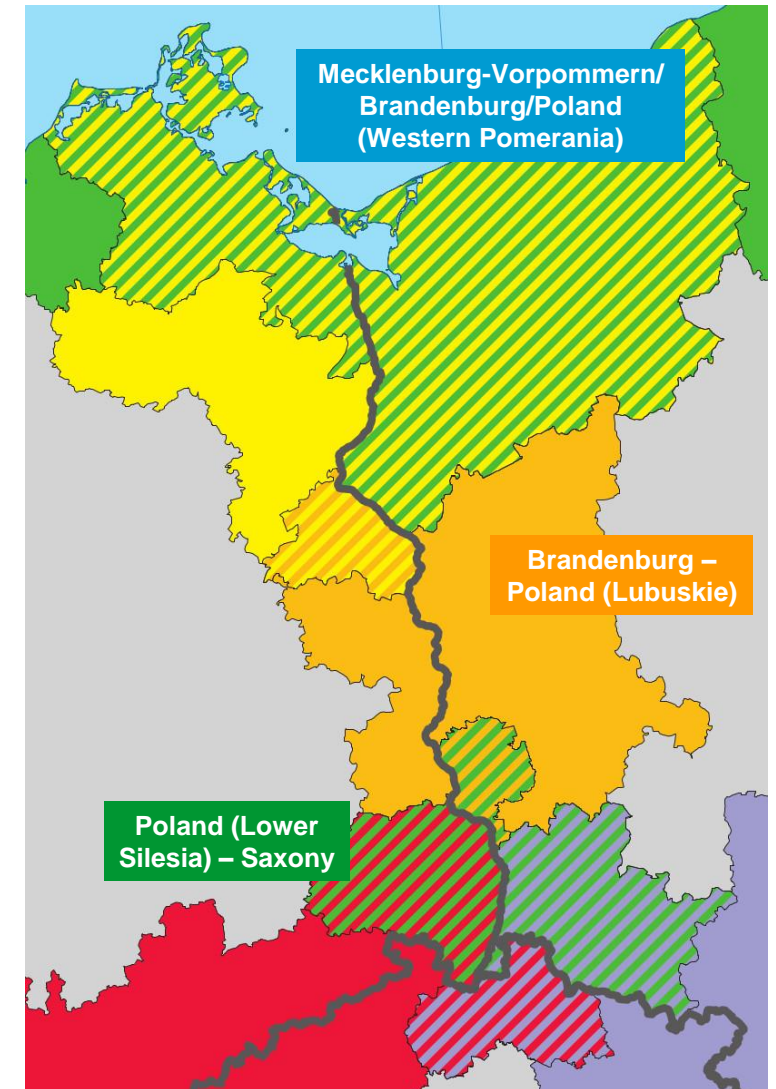
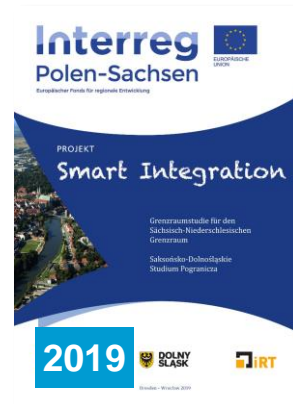
- Hosts of the Intergovernmental Commission: National governments, regional governments participate (and take partly care for Committees)
- Hosts of the Oder-Partnership: Regional governments, national governments observe (partly)
- Focus of the Transport Working Group: cross-border rail infrastructure
- Focus of the „Transport Round Table“: cross-border public transport offers and organisational issues



COMPLEMENTARY APPROACHES AND INITIATIVES FOR INTEGRATED (CROSS-BORDER) DEVELOPMENT

Regional level: Cross-border cooperation programmes and projects, regional concepts and strategies

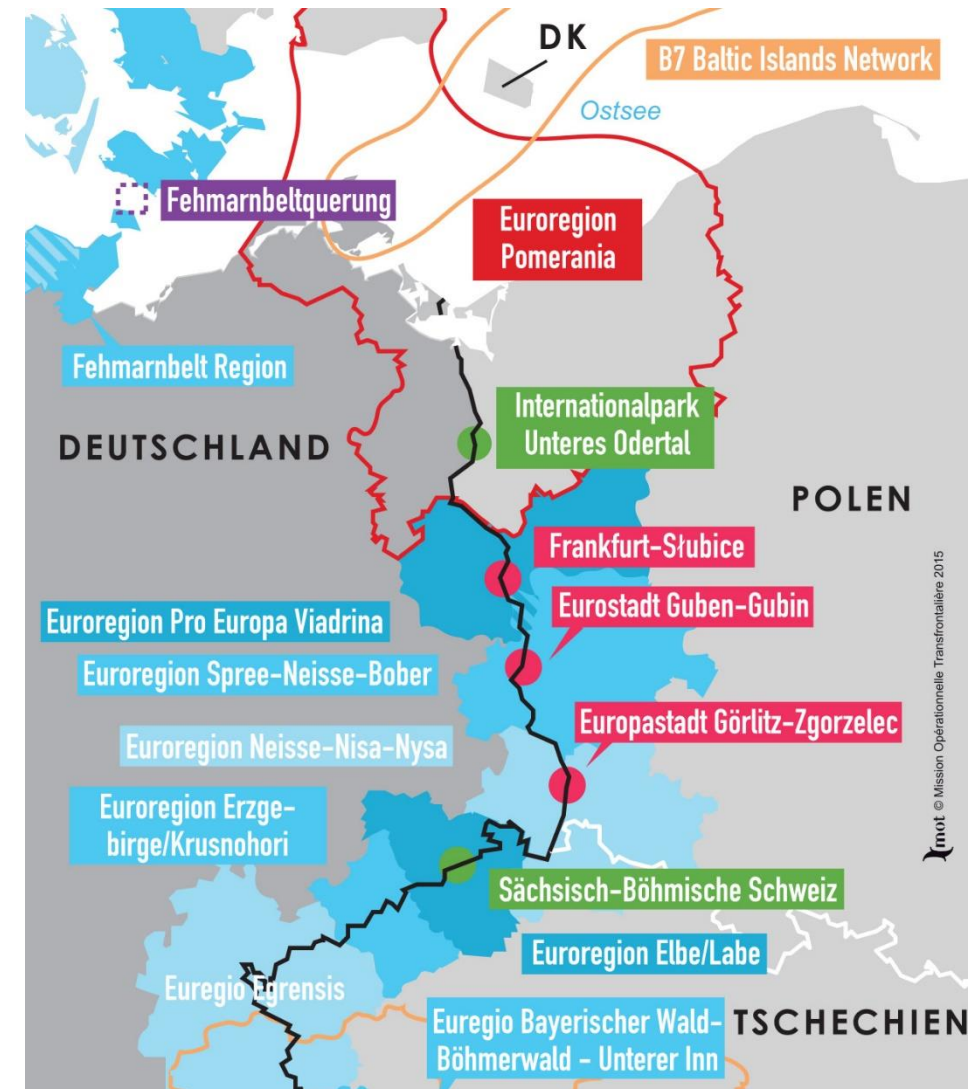
- Due to the federal structure of Germany, territorial cooperation is supported through three separate Interreg A programmes
- Strategic (crossover) projects are difficult to implement
- So far, spatial concepts and strategies are available for two programme areas; additionally neighbourhood strategy BB-PL



COMPLEMENTARY APPROACHES AND INITIATIVES FOR INTEGRATED (CROSS-BORDER) DEVELOPMENT

Local level: Euroregions, local initiatives and cooperation structures

- Since 1993, four Euroregions have been established
- Crucial role for the implementation and management of Small Project Funds (people-to-people projects)
- Separate organisational structures on both sides of the border, regular development of cross-border strategies and action plans
- Additional cooperation structures in border towns and twin cities, many cross-border partnerships
- Since 2021: EGTC Geopark Muskau Arch

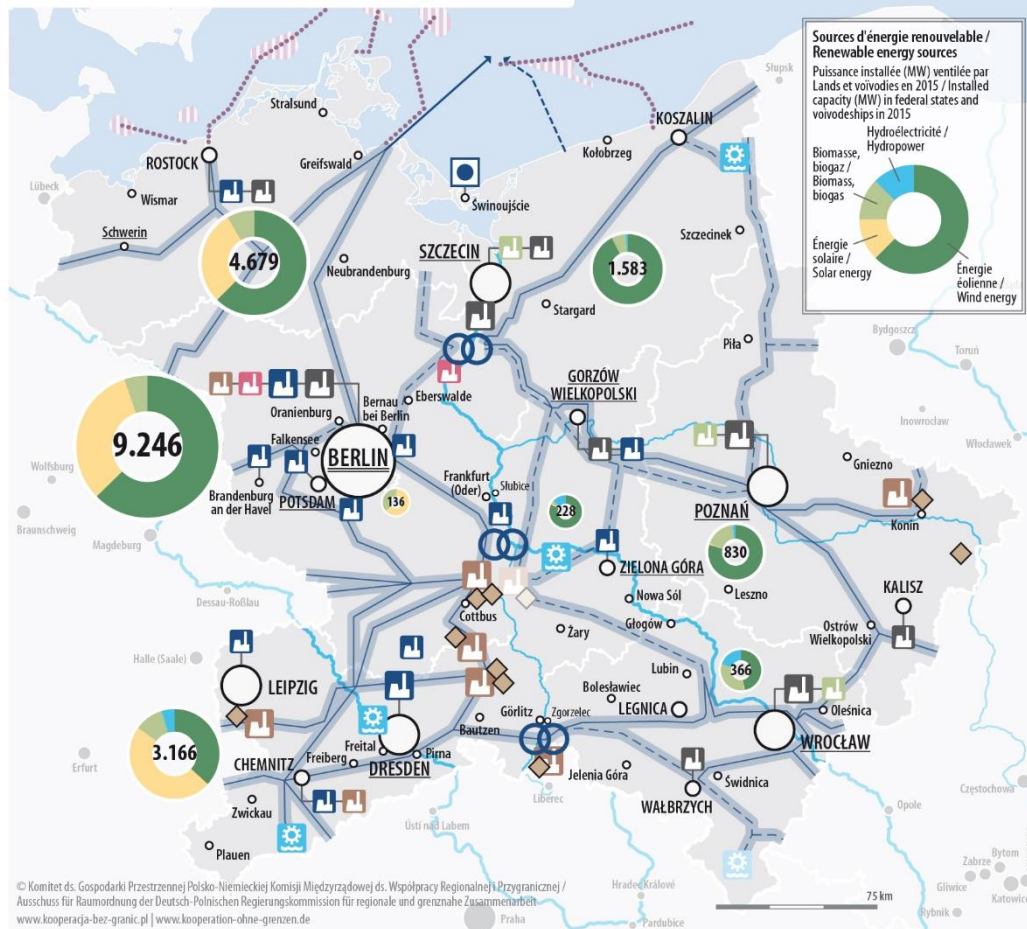


03

Key challenges and border impacts: Energy, Environment & Transport

KEY CHALLENGES AND BORDER IMPACTS

Situation initiale – Sécurité énergétique / Initial situation – Energy security



Production d'énergie / Energy production

Centrales électriques et centrales de cogénération (capacité cumulée) / Power plants and CHP plants (total power)

- > 1.000 MW
- > 100 MW
- Mine de lignite à ciel ouvert (existante / envisagée) / Open pit lignite mine (existing / planned)
- Complexe énergétique Gubin-Brody (envisagé) / Gubin-Brody energy complex (planned)
- Centrale de pompage > 75 MW (existante / envisagée) / Pumped-storage hydroelectricity plant > 75 MW (existing / planned)
- Zones propices au développement des parcs éoliens en mer / Offshore wind farm development areas

Réseaux de transport de l'électricité / Transmission networks

- Principales lignes d'électricité ≥ 380 kV (existantes / envisagées) / Major power lines ≥ 380 kV (existing / planned)
- Développement des interconnexions énergétiques transfrontalières (RTE-E) / Expansion of cross-border power grids (TEN-E)
- Raccordement des parcs éoliens en mer / Connection of offshore wind farms

Approvisionnement en gaz – projets stratégiques / Gas supply - strategic projects

- Terminal GNL / LNG terminal
- Gazoducs maritimes (existants / envisagés) / Marine pipelines (existing / planned)

I.4 Energy savings and efficient use of energy

[...] Joint energy concepts will be developed and good practice will be shared, first and foremost within border towns and twin cities.

IV.3 Increasing energy security

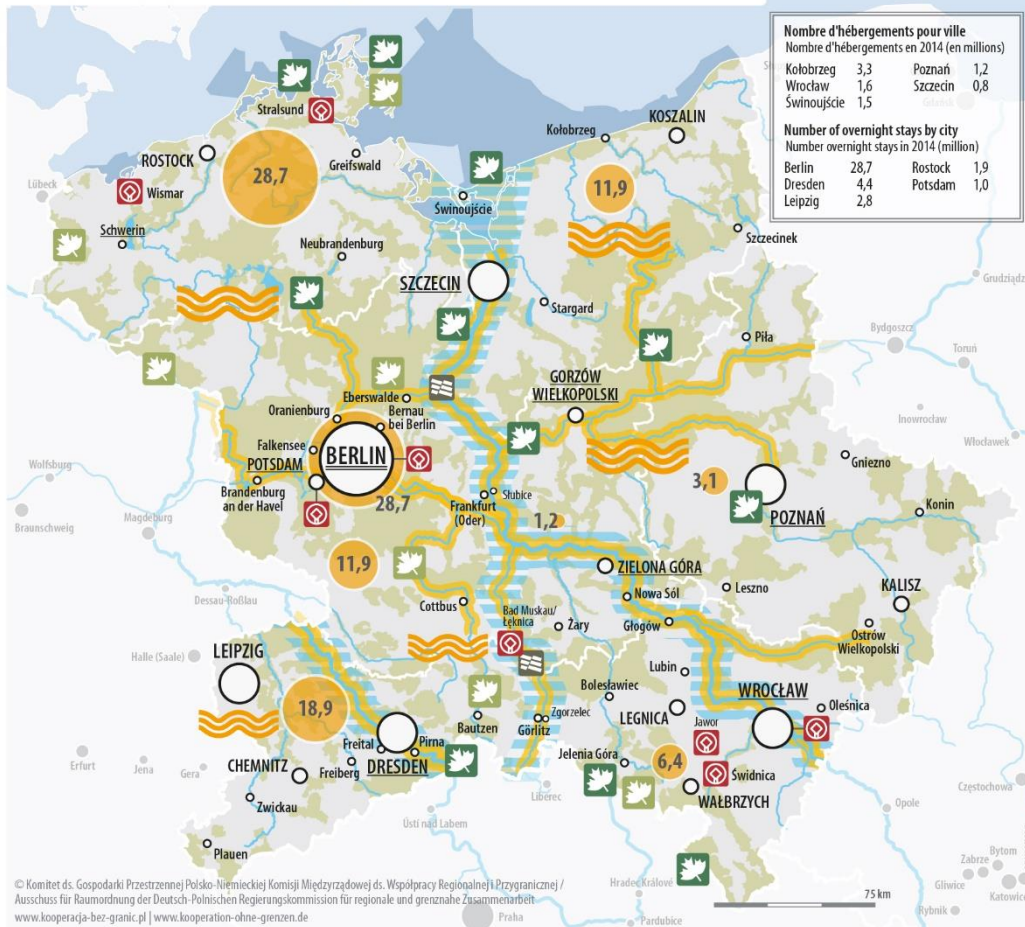
[...] Energy consumption will be reduced and energy supply diversified. Excess energy stores allow for an effective and efficient use of energy from renewable sources. Links between cross-border electricity networks will be improved to ensure the security of energy supplies. [...]

Energy – Energy networks and energy security


Level	Challenges	Border-related observations	Resources, instruments and networks
National	Lagging transformation of the energy sector towards renewable energies and decentralised structures of energy supply	DE-PL: Conflicting discourses, lack of trust in the reliability of renewable energies	German-Polish Energy Platform, launched in 2023 by dena (DE, government agency) and KAPE (PL, private agency)
Regional	Need for modernization, extension and “smart management” of electricity networks due to renewable energies Need for diversification of energy supply	PL: Interest in exchange of experiences	Cross-border cooperation projects e.g. BEA-APP (Interreg A South Baltic Programme), MoRE (Interreg A Mecklenburg-Vorpommern/Brandenburg/Poland)
Local	Conflicts: <ul style="list-style-type: none"> • North Stream vs. Baltic Pipe • Localisation of “visionary” investments at the border (nuclear power plant in Gryfino, Gubin-Brody energy complex) • Termination of nuclear energy in DE vs. will to build nuclear power plants in PL 	DE-PL: Interest in practical solutions in border towns and twin cities	Cross-border cooperation and investment projects e.g. Joint district heating in Frankfurt (Oder)/ Słubice (since 2015) and in Görlitz/Zgorzelec (climate-neutral district heating until 2030)

KEY CHALLENGES AND BORDER IMPACTS

Situation initiale – Ressources paysagères et culturelles / Initial situation – Landscape and cultural resources



Ressources paysagères, tourisme / Landscape resources, tourism

-  Rivières et voies navigables / Rivers and waterways
-  Paysage fluvial possédant une valeur touristique extraordinaire / River landscape of particular interest to tourists
-  Région des lacs possédant une valeur touristique extraordinaire / Lakeland particularly attractive to tourists
-  Nombre d'hébergements ventilé par Lands et voivodeships / Number of overnight stays by federal state and voivodeships

Protection contre les inondations / Flood protection

-  Nécessité de coopération en matière de protection transfrontalière contre les inondations / Need for cooperation in cross-border flood protection

II.3 Boosting the competitiveness of seaports

In order to strengthen the competitive position of seaports in the German-Polish interaction area, [...] inland connections will be upgraded according to the links and corridors of the trans-European transport network (TEN-T).

II.4 Activation of inland shipping

In order to develop freight transport in a way that is as little harmful to the environment as possible and make better use of the developing infrastructure, a joint effort is to be made to strengthen the role of inland shipping in the German-Polish interaction area. The principles of economy, environmental protection and flood protection are of particular importance in this context.

V.2 Strengthening ecological ties

Objectives and concepts relating to the functioning of ecological corridors, e.g. along rivers, [...] will be coordinated and implemented. [...] Regions and objects which are located directly in the border region, e.g. landscape and national parks, will be protected and preserved in close cooperation.

V.4 Reducing the risk of flooding and natural disasters

The risk of flooding along the rivers Oder and Lusatian Neisse will be reduced on both sides of the border by closely coordinating measures that are aimed at preventing risks and controlling floods. [...]

Environment & Transport – The Oder river / The Oder waterway

Level	Challenges	Border-related observations	Resources, instruments and networks
National	<p>PL: Modernisation of the Oder waterway as national mega-project, capitalising the Oder channel Upper Silesia-Wrocław and the construction of river barrages in Brzeg Dolny and Malczyce</p> <p>DE: Improvement of the accessibility of inland ports in Schwedt/Oder and Berlin (Oder-Havel waterway)</p>	<p>DE-PL: Conflicting discourses, geared by national interests</p> <p>Agreement from 12 June 2015 on the joint improvement of the situation on the waterways in der German-Polish border area (flood protection, discharge and navigation conditions)</p>	<p>International Commission for the Protection of the Oder River against Pollution, German-Polish Commission on Border Waters</p> <p>DE: Research projects on damages and regeneration of the Oder river</p>
Regional	<p>Need for ecological rehabilitation of the Oder river after the 2022 ecological disaster and sustainable water management</p>	<p>DE-PL: Interest in ecological rehabilitation of the Oder river</p> <p>PL: Parallel support for modernisation of the waterway and development as ecological corridor</p>	<p>Cooperation of Polish voivodships on the protection and restoration of the Oder river ecosystem</p>
Local	<p>Need for efficient flood protection (risk of winter and summer floodings)</p>	<p>DE-PL: Interest in tourism development, and partly in waterfront development</p>	<p>Cross-border cooperation and investment projects</p>

04

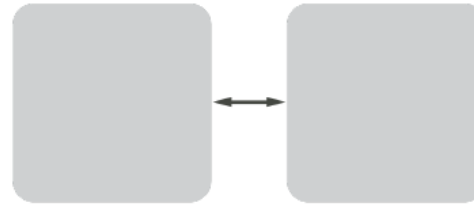
Connections, synergies – and missing links



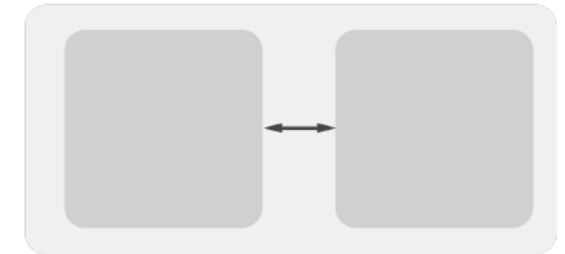
Missing vertical integration

- All administrative levels cooperate, following a „horizontal“ logic
- There are huge differences in cooperation culture – from conflict on national level to pragmatic cooperation on local level
- Vertical links are limited to (single) linkages between national and regional levels
- Certain movements towards more vertical cooperation become visible in the effect of the Corona pandemic

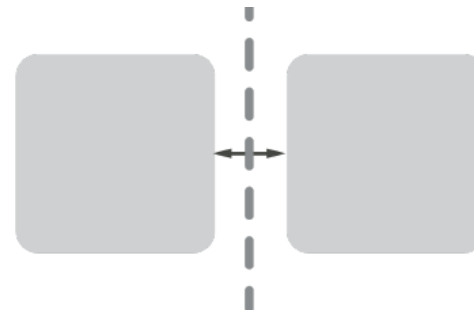
Inter-institutional governance



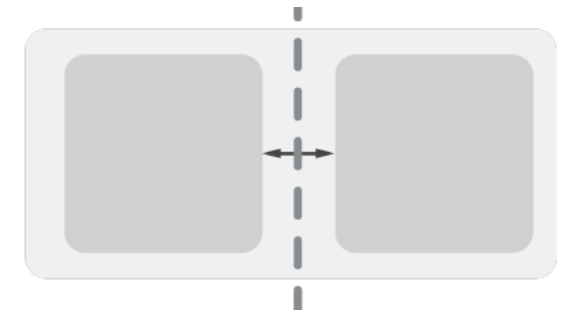
Intra-institutional governance



Inter-institutional cross-border governance

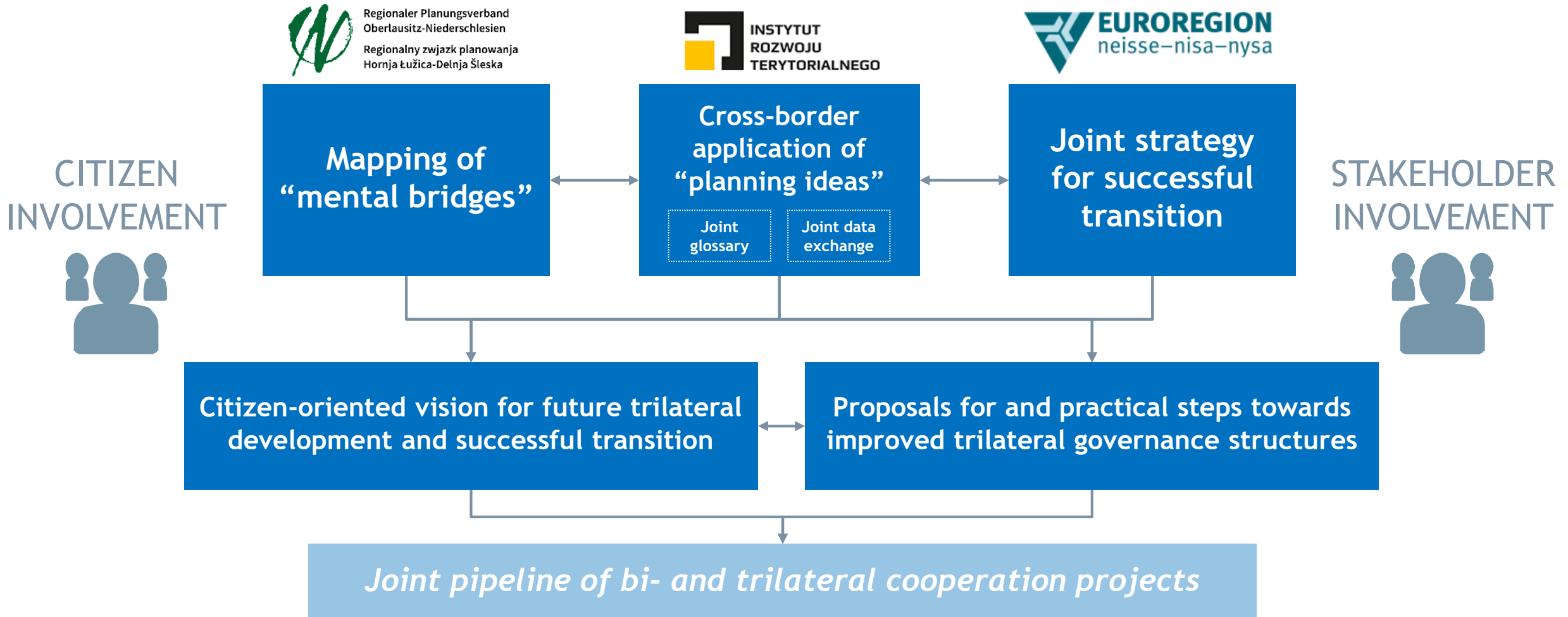


Intra-institutional cross-border “supraregional” governance



Governance and institutions © Ulrich 2021

TRILATERAL PILOT INTEGRATED CROSS-BORDER STRATEGY DEVELOPMENT





THANK YOU FOR YOUR ATTENTION!

Brandenburg University of Technology Cottbus – Senftenberg
Faculty 6 – Architecture, Civil Engineering and Urban Planning
Chair of Regional planning
Martin Reents

Konrad-Wachsmann-Allee 4
03046 Cottbus

T +49 (0)355 69 3915
E martin.reents@b-tu.de

www.b-tu.de

