



Institute for Transnational and Euregional Cross border Cooperation and Mobility / ITEM

Cross-border knowledge for policy and practice



**Maastricht University / Provincie Limburg / Zuyd Hogeschool /
NEIMED / Gemeente Maastricht /Euregio Maas-Rijn (EMR)**

“Cross-border Policy making and the role of legislative impact assessment”

Martin Unfried

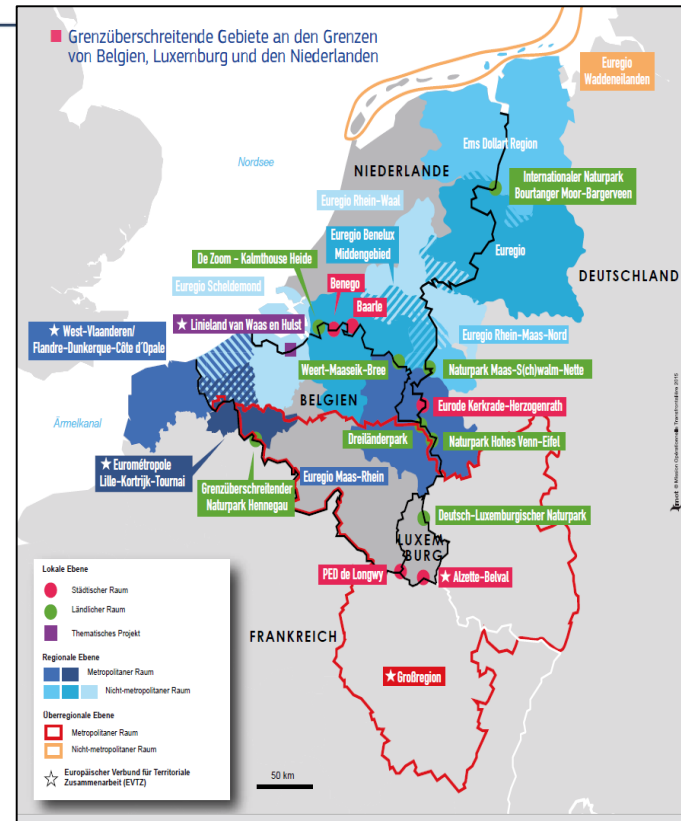


Tool	Application	Decision stage	Objective/focus
European Commission	Regulatory Impact Assessment	Assessment of a Commission proposal on policy strategy or legislation	Cost-benefit analysis, employment, European competition, sustainability, territorial dimension (as decided until now)
National government Netherlands	Discussion about the cross-border impact assessment prior to national/EU legislation/policy	National ex ante component of the proposal by line ministries	Coordination on national policy/border situation, Coordination on transposing EU law into neighbouring countries
ESPON Quickscan TIA Territorial Impact Assessment	Tequila, Quick Check, EATIA Assessment of territorial effects of EU legislation	Ex ante (ex post)	Improvement of impact assessments by the European Commission
EURO Institut/Center for Cross Border Studies, Impact Assessment Toolkit for cross-border cooperation	Assessment of cross-border projects/policy	Ex ante	Improvement of projects and programmes
Territorial Impact assessment CBC Programmes i.e.. Prof. Medeiros	Assessment the territorial effects of Programmes	Ex ante and ex post	Improved CBC Programmes

ITEM cross-border impact assessment 2017

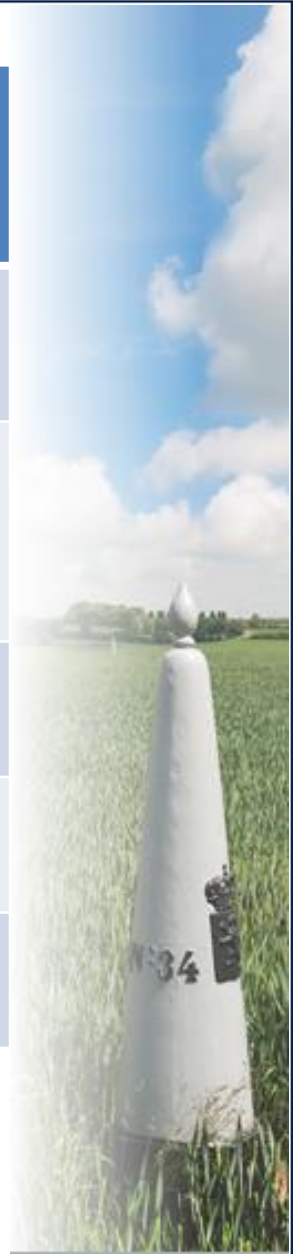
Dossiers

1. The German toll
2. Tax Treaty Netherlands-Germany
3. Coordination Regulation Social security
4. Belgian passenger name records regulation



Dossiers 2018 Examples

1. Increase VAT of certain products (NL)
2. German Benefits for House owners/cross-border workers
3. Pension age, legislation NL/BE/DE
4. Cannabis Pilot in NL



Dossiers 2019

1. 90% Rule Tax rules in NL for cross-border workers
2. European Cross-border Mechanism – potential impact on specific border-regions
3. Nitrates Directive and manure quotas NL/DE
4. Cross-border data – effects of present Data (NL/DE/BE)
6. Governance and INTERREG: 15% provision
7. Law on the standardisation of the legal status of civil servants NL



ITEM's cross-border impact assessment

Three impact themes:

- the cross-border impact from the perspective of individuals, associations, and enterprises correlated with the objectives and principles of European Integration (freedoms, citizenship, and non-discrimination);
- the cross-border impact on socioeconomic development/sustainable development;
- the cross-border impact on Euregional cohesion and cross-border governance structures (cooperation with governmental agencies, private citizens, the business sector, etc.).



Goals/principles	Good practice/benchmark	Indicators
European integration, European citizenship, Non-discrimination	No border controls, open labour market, easy recognition of diplomas, good coordination of social security facilities, taxes	Number of border controls, cross-border commuting, duration and cost of recognition of diplomas, access to housing market, etc.
Regional competitive strength, Sustainable development of border regions	Cross-border initiatives for establishing companies, Euregional labour market strategy, cross-border spatial planning	Euregional: GDP, unemployment, quality of cross-border cluster, environmental impact (emissions), poverty
Cross-border cooperation/Good Governance, Euregional cohesion	Functioning of cross-border services, cooperation with organizations, coordination procedures, associations	The number of cross-border institutions, the quality of cooperation (in comparison to the past), development of Euregional governance structures, quantity and quality of cross-border projects

martin.unfried@maastrichtuniversity.nl

www.maastrichtuniversity.nl/item

[Itemcrossborderportal.maastrichtuniversity.nl](http://itemcrossborderportal.maastrichtuniversity.nl)

E-mail: Item@maastrichtuniversity.nl

Address: Bouillonstraat 1-3 | 6211 LH
Maastricht, The Netherlands

