

International conference on the 10th anniversary of CESCO

BOTTOM-UP CROSS- BORDER PLANNING



DINAMIA'CET

CENTRO DE ESTUDOS SOBRE A MUDANÇA
SOCIOECONÔMICA E O TERRITÓRIO
ISCTE-IUL

ISCTE IUL
Instituto Universitário de Lisboa

Budapest: 25 April 2019

EDUARDO MEDEIROS 2019

- A systematic preparation and implementation of a **spatial-oriented policy or plan, in a border region**, with a view to **anticipate spatial changes**, and in order to have direct or indirect positive effects on spatial activities, with the ultimate goal of **reducing the barrier effect and enhancing territorial capital**'.

Why is it relevant and necessary?

- 1 - Time: It allows for a more strategic longer-term planning;
- 2 - Solidified Institutional Networking: between national, regional, local..
- 3 - Improved articulation with existing territorial development plans
- 4 - Extending sources of financing: national and regional sources;
- 5 - Reinforcing the principle of subsidiarity: cross-border programmes work best if planned and managed at the regional level, rather than at the national level.

BOTTOM-UP CB PLANNING

BOTTOM-UP CROSS-BORDER PLANNING

Territorial Capital

Reducing Border barriers

Main Strategic Goals

EU

National

Regional

Local

Citizens

Territorial levels & border dwellers involved in designed in the strategy

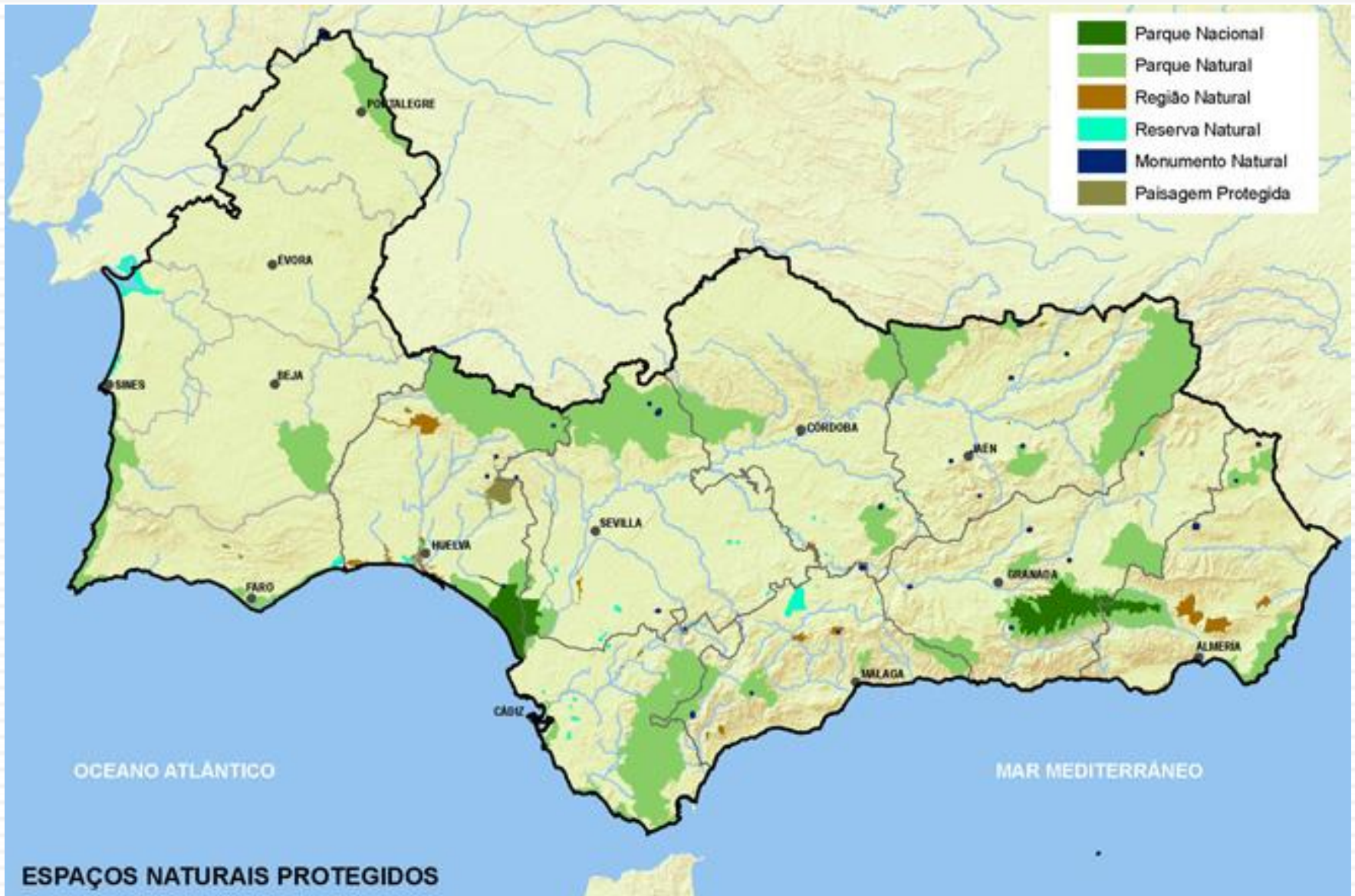
Barrier effect dimension	Indicators
Cultural-Social	1.1 - Number of shared social equipment (hospitals, schools) 1.2 - Number of students receiving border language courses 1.3 - Number of students in courses supported by cross-border universities networks 1.4 - Number of cross-border culture events
Institutional-Legal	2.1 - Number of cross-border entities 2.2 - Number of cross-border urban networks 2.3 - Number of agreements in legal standardization 2.4 - Number of cross-border assistance/information posts
Economy-Technology	3.1 - Number of cross-border commuters 3.2 - Number of companies from the other side of the border 3.3 - Value of trading between the border areas 3.4 - Number of cross-border entrepreneurship courses
Environmental-Heritage	4.1 - Number of agreement between protected areas 4.2 - Amount of renewable energy produce in each side of the border 4.3 - Number of heritage protection agreements
Accessibility	5.1 - Number of cross-border vehicles 5.2 - Number of cross-border public transportation carriers (bus, tram and train) 5.3 - Number of cross-border road passages 5.4 - Number of cross-border rail passages 5.5 - Number of cross-border high-ways

- **Historical:** CB intensity, maturity, conflicts ...
- **Spatial:** CB functional areas, urban systems ...
- **Demographic:** CB commuting, population densities
- **Cultural:** Language, cultural affinities ...
- **Data:** Available CB statistics
- **Institutional:** CB entities, legislation and regulations
- **Economic:** CB Commerce, programmes, students ...
- **Infrastructural:** CB public transports, road/rail infrastructure
- **Environmental:** CB protected areas, shared river basins
- **Social:** CB public services

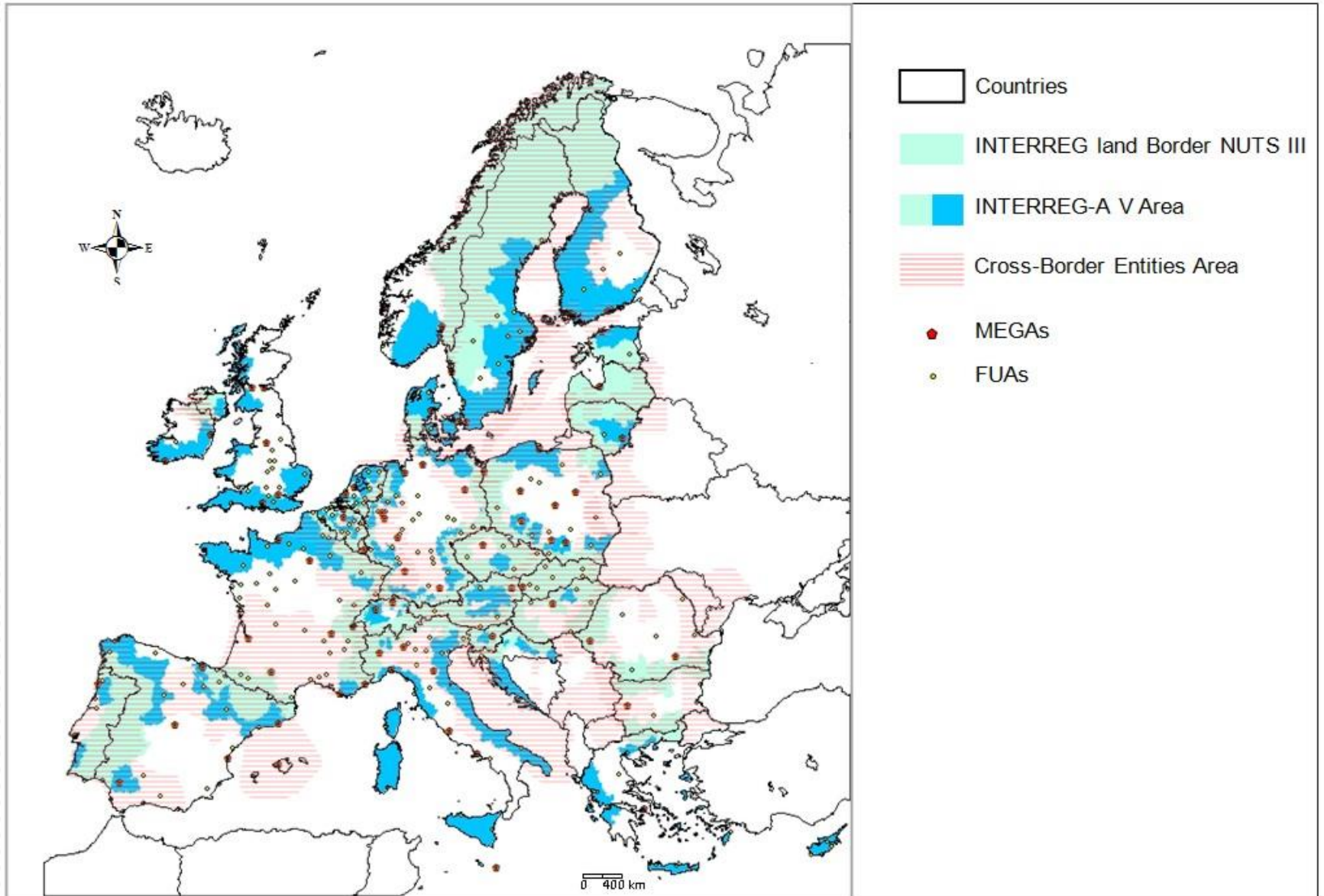
Borderline

Border Area

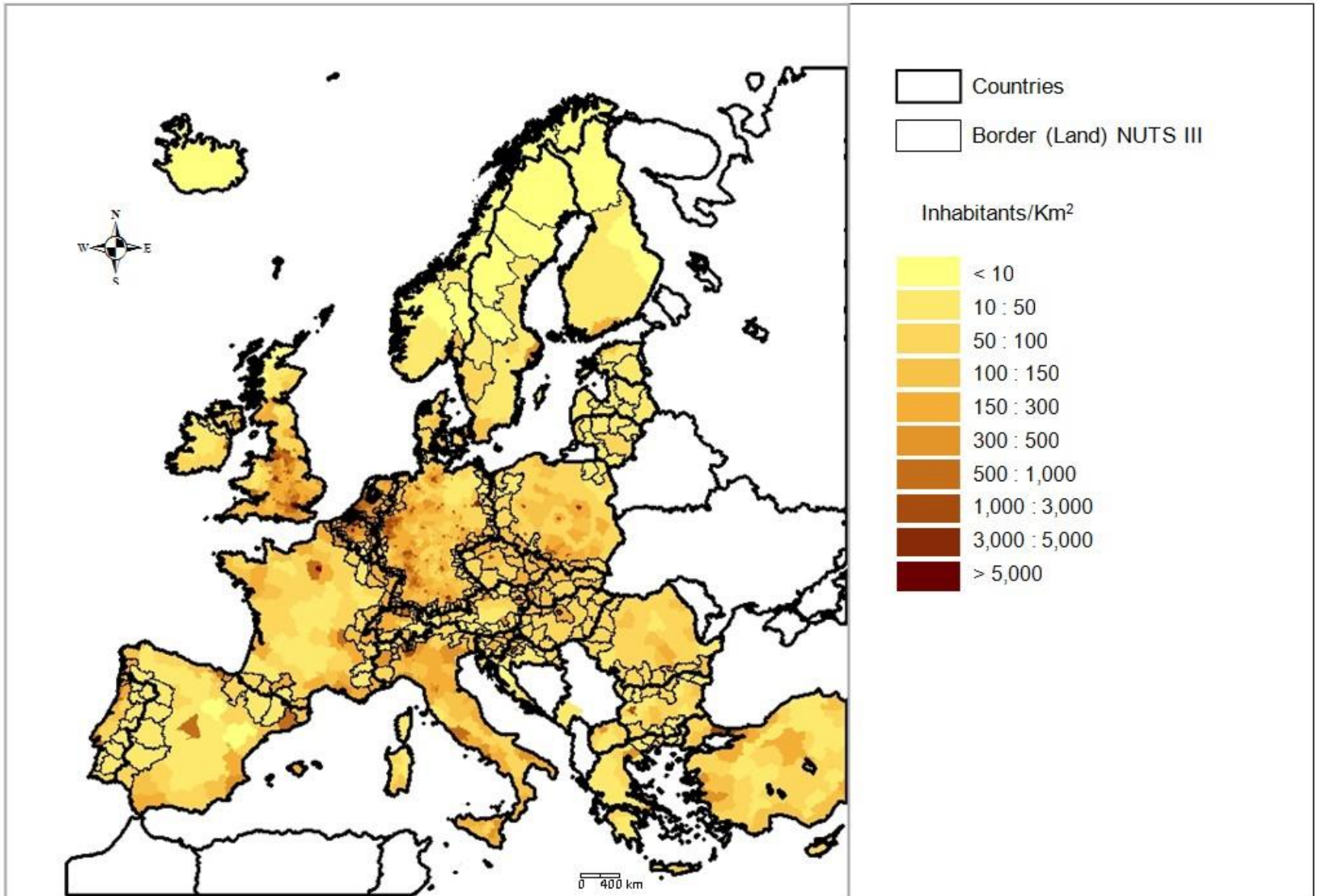
CB PLANNING AREA



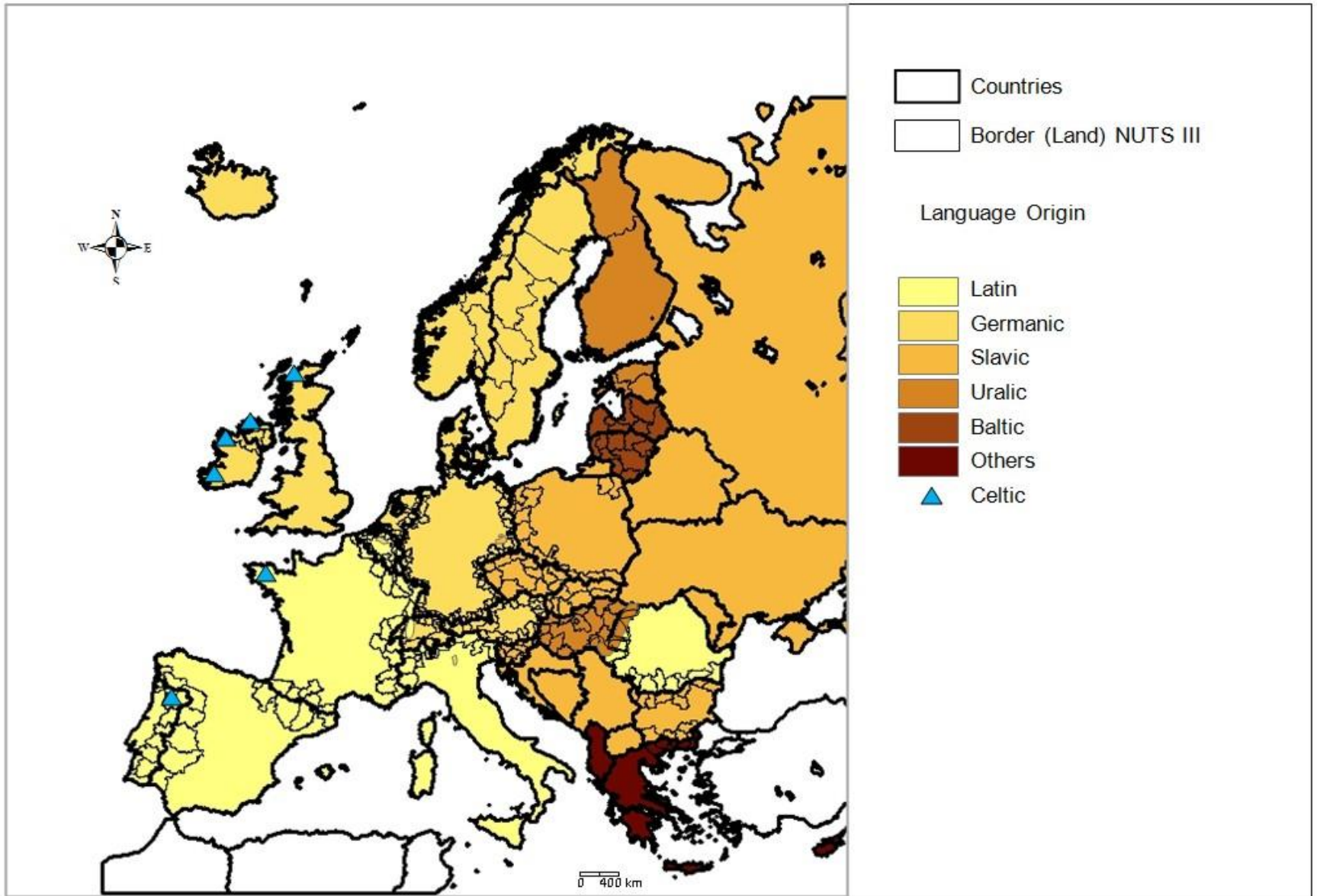
CB PLANNING AREA – CB ENTITIES



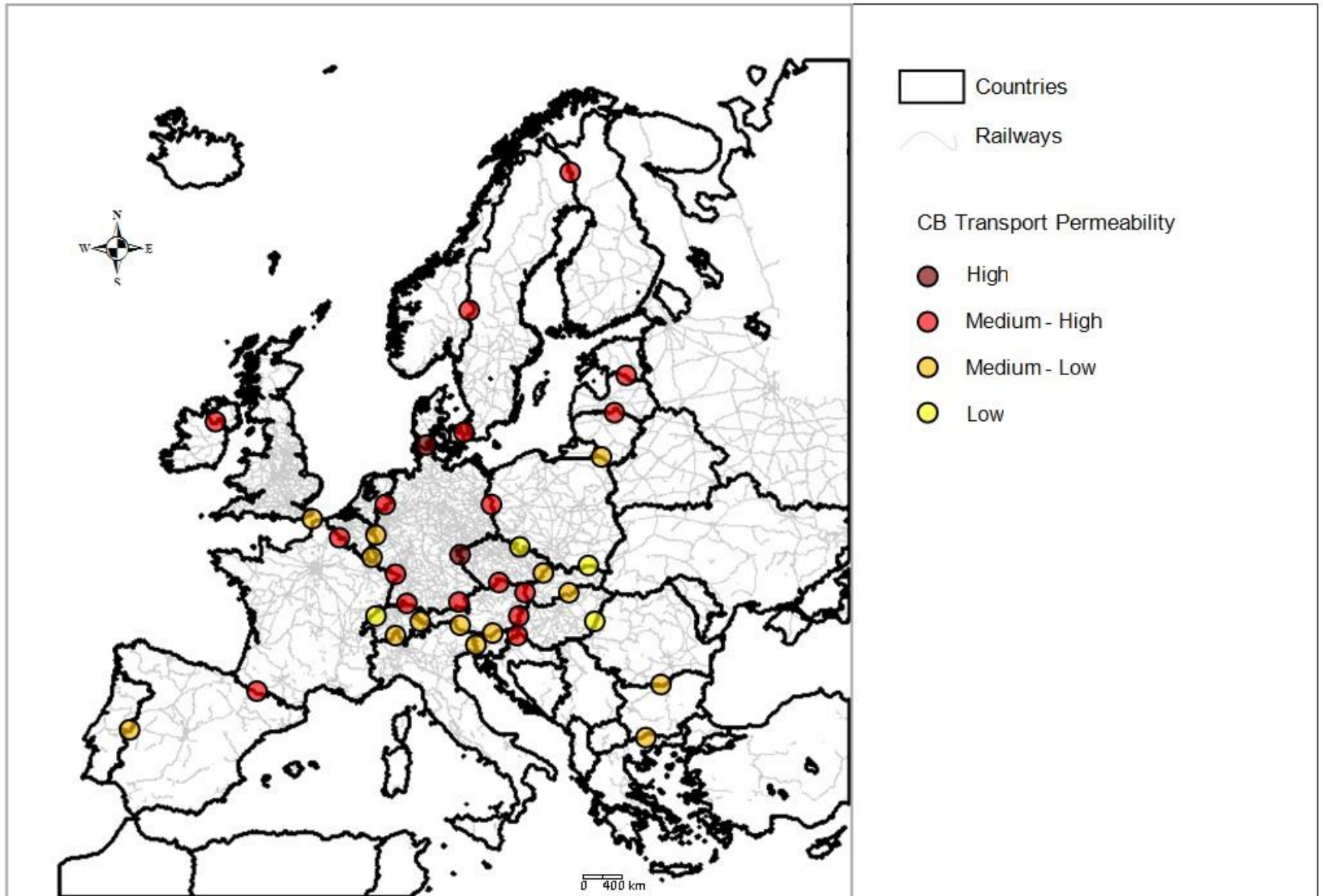
CB PLANNING AREA – Pop. Density



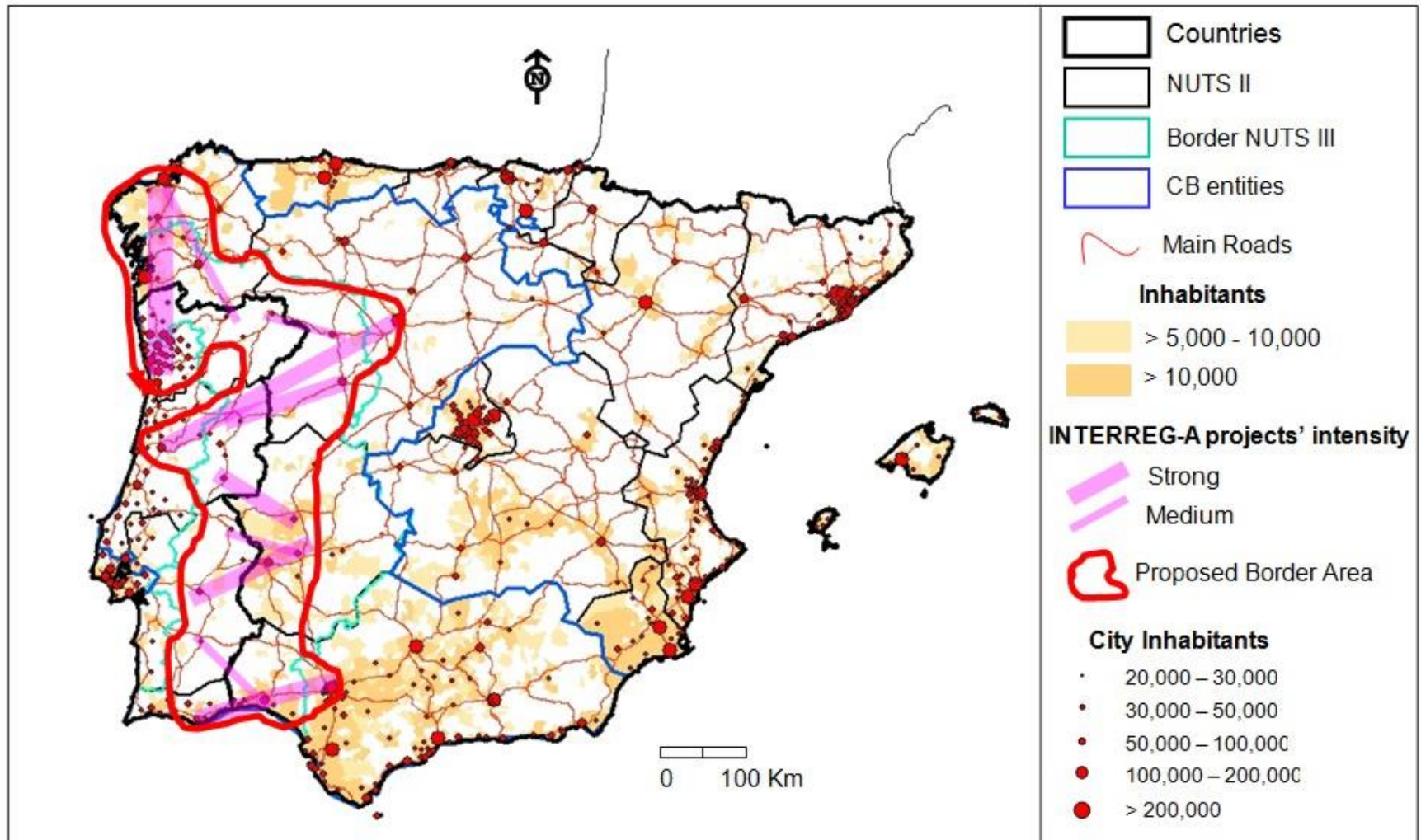
CB PLANNING AREA - Languages



CB PLANNING AREA - Accessibility



CB PLANNING AREA – IBERIAN PENINSULA



The Urban Book Series

Eduardo Medeiros *Editor*

European Territorial Cooperation

Theoretical and Empirical Approaches to
the Process and Impacts of Cross-Border
and Transnational Cooperation in Europe

 Springer

THANKS FOR WATCHING

Eduardo.Medeiros@iscte-iul.pt